

RASTER

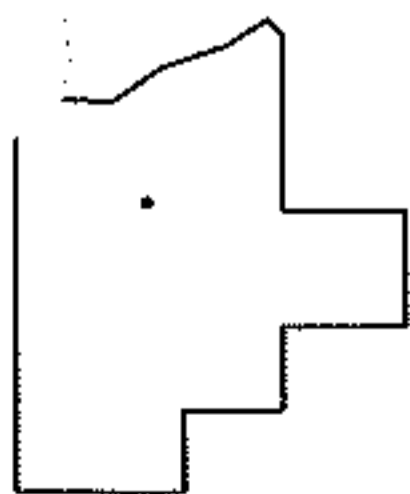
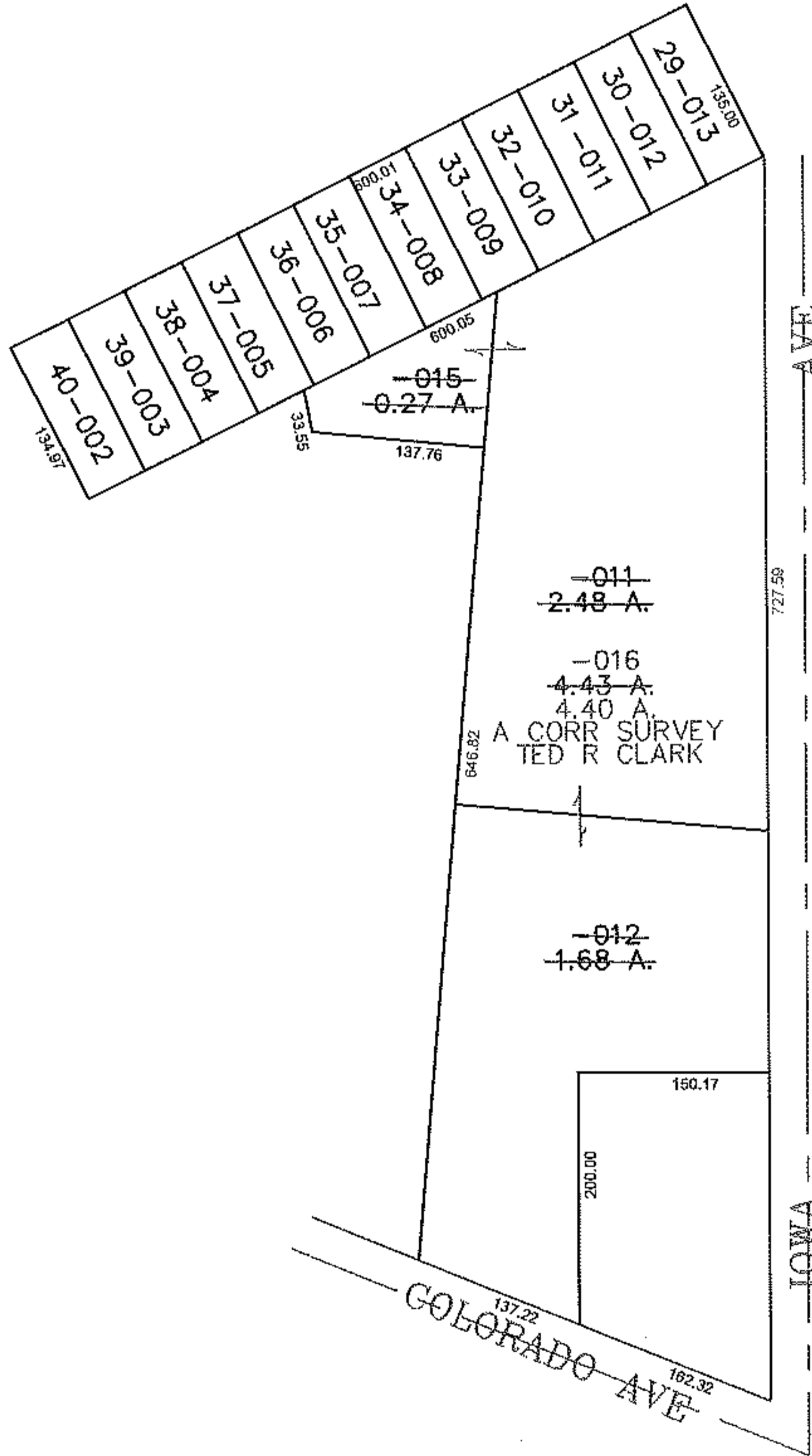
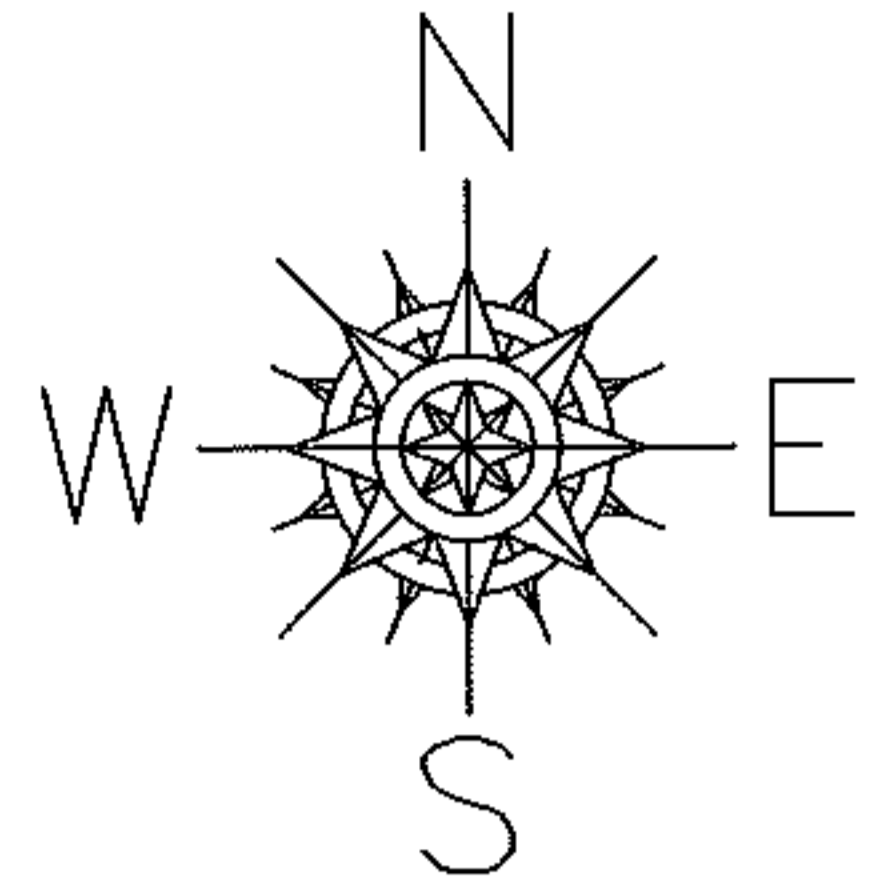
PARENT PARCEL: 02-00-051-135-011, -012, 015 *SEE BELOW STRAIGHT TRANSFER NO.

09-02702

CHILD PARCEL: 02-00-051-135-016

STARTING POINT: SIDELINE OF COLORADO AVE & IOWA AVE

- * 02-00-051-134-002
- 02-00-051-134-003
- 02-00-051-134-004
- 02-00-051-134-005
- 02-00-051-134-006
- 02-00-051-134-007
- 02-00-051-134-008
- 02-00-051-134-009
- 02-00-051-134-010
- 02-00-051-134-011
- 02-00-051-134-012
- 02-00-051-134-013



SPLITS/DEEDS PROCESSED
 LORAIN COUNTY TAX MAP DEPARTMENT
 226 MIDDLE AVE. ELYRIA, OHIO

SURVEYED BY: TED R CLARK
 CLOSURE: 0.00 : 10.000
 MAP PAGE(S): 02-00-051-B
 APPROVED BY: JAH DATE: 5-20-09
 SCALE: 1" = 200' PRIOR INSTRUMENT: 20040023076