

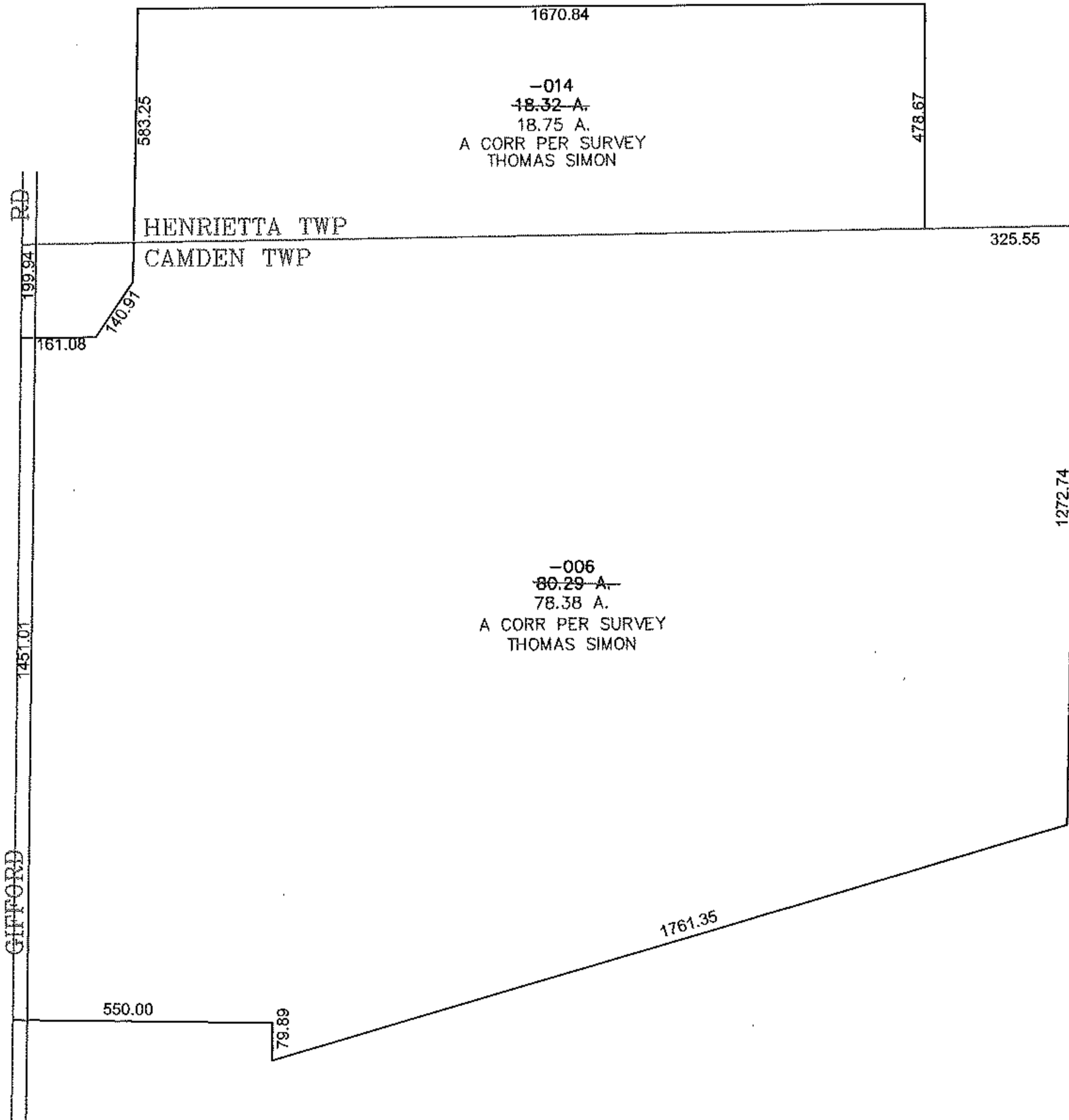
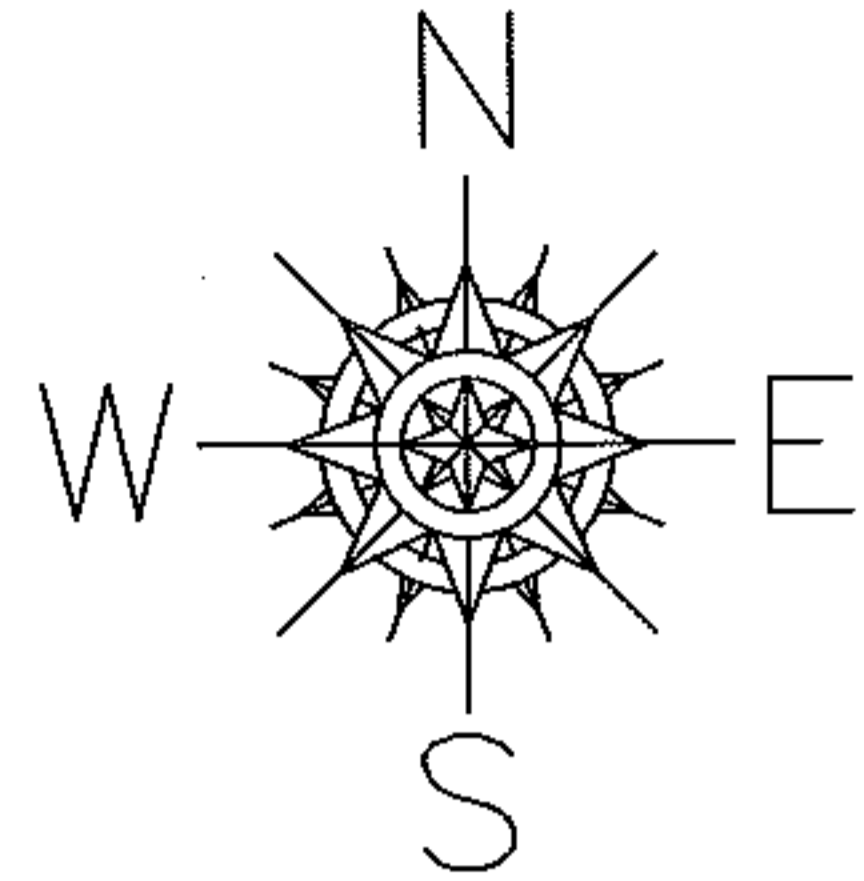
RASTER

PARENT PARCEL: 08-12-018-000-014, 13-11-008-000-006

CHILD PARCEL: SAME

STARTING POINT: CENTERLINE OF GIFFORD RD & TWP LINE OF HENRIETTA/CAMDEN

09-02701



**SPLITS/DEEDS PROCESSED**

LORAIN COUNTY TAX MAP DEPARTMENT  
226 MIDDLE AVE. ELYRIA, OHIO

SURVEYED BY: THOMAS SIMON

CLOSURE: 0.00 : 10.000

MAP PAGE(S): 8-H, 13-D

APPROVED BY: JAH DATE: 5-18-09

SCALE: 1" = 400 PRIOR INSTRUMENT: 20020829208