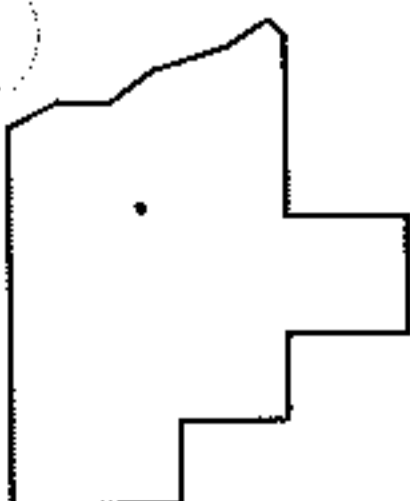
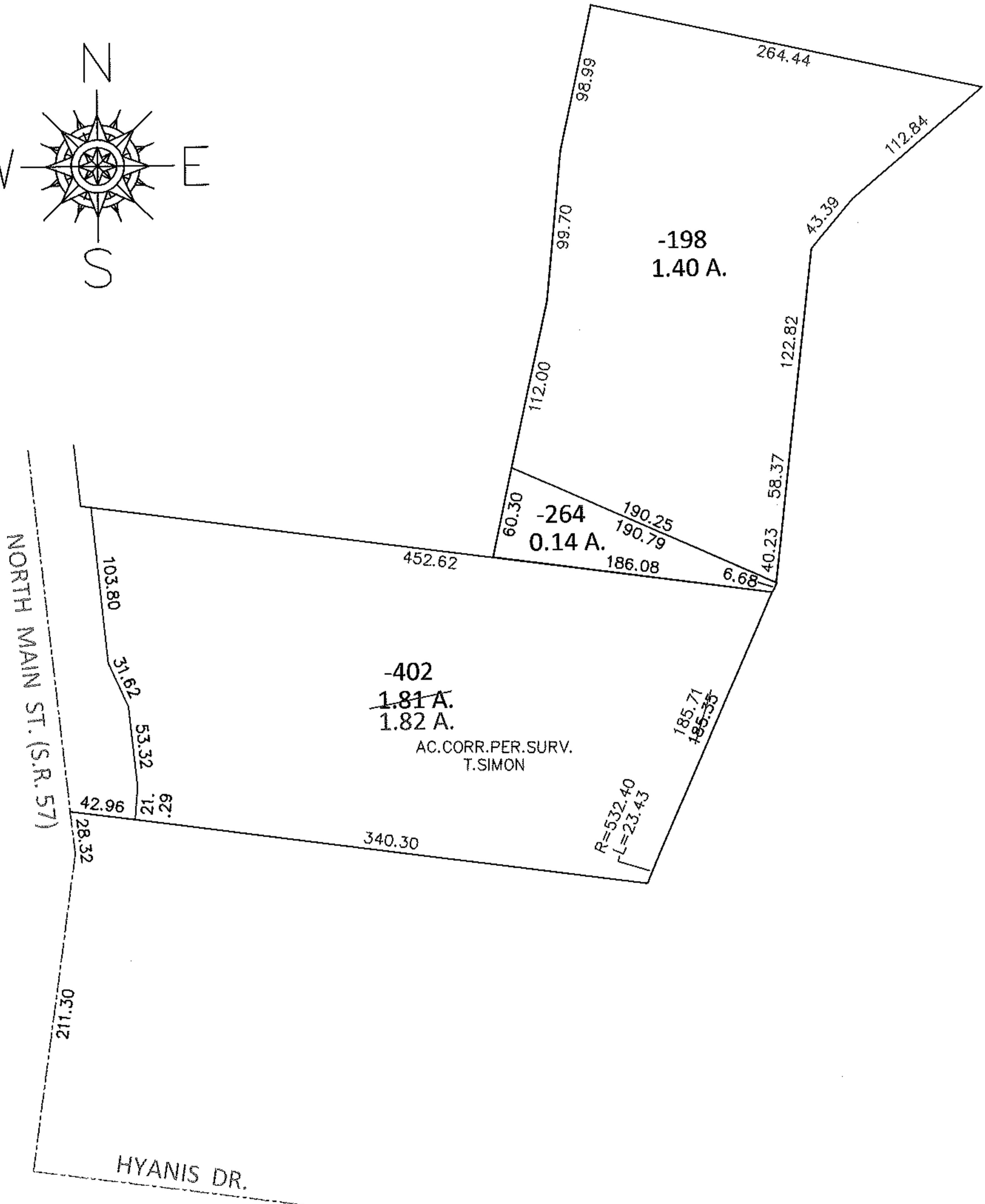
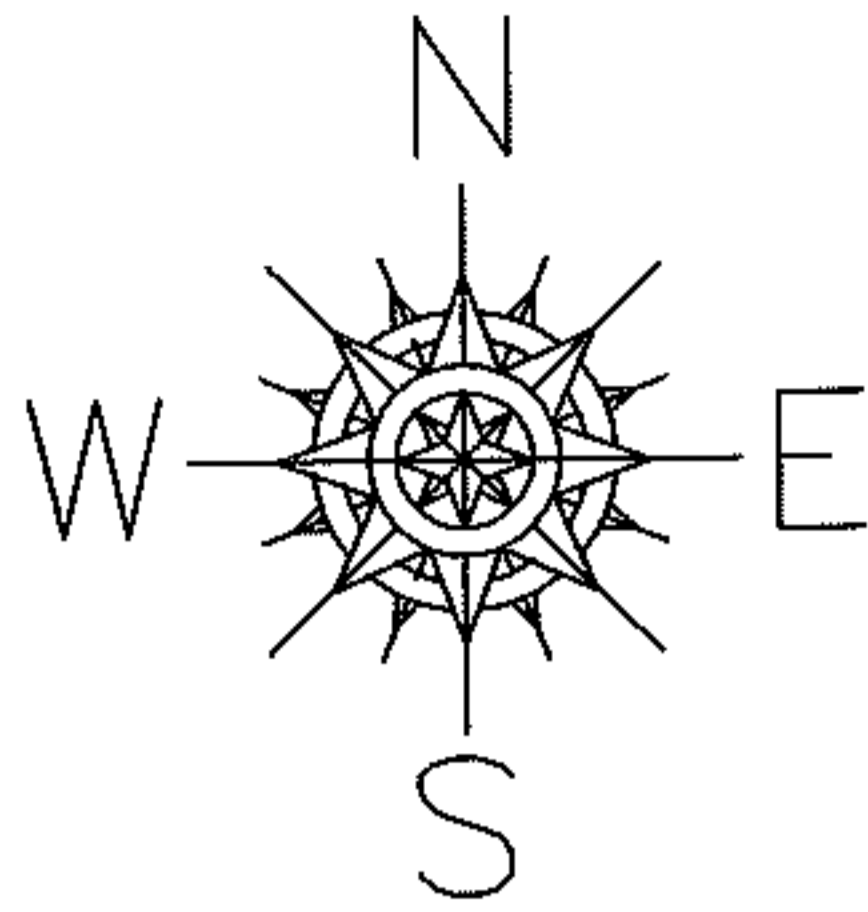


PARENT PARCEL: 11-00-099-000-198, -264, -402

13-02700-A

CHILD PARCEL:

STARTING POINT: INTERSECTION OF C/L OF HYANIS DR. AND C/L OF S.R.57



SPLITS/DEEDS PROCESSED

LORAIN COUNTY TAX MAP DEPARTMENT
226 MIDDLE AVE. ELYRIA, OHIO

SURVEYED BY: THOMAS A. SIMON

CLOSURE: .01:10,000

MAP PAGE(S): 11-00-099-B

APPROVED BY: RRM DATE: 3-28-13

SCALE: 1" = 100 PRIOR INST.: 20090321291