

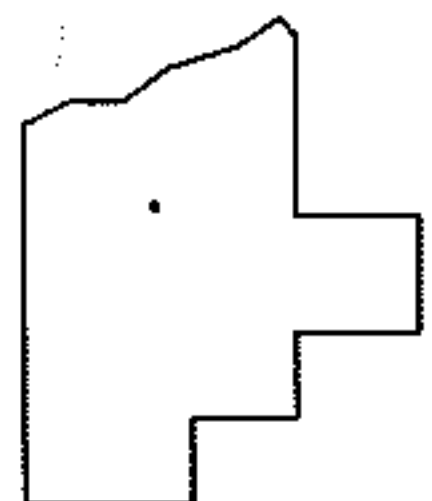
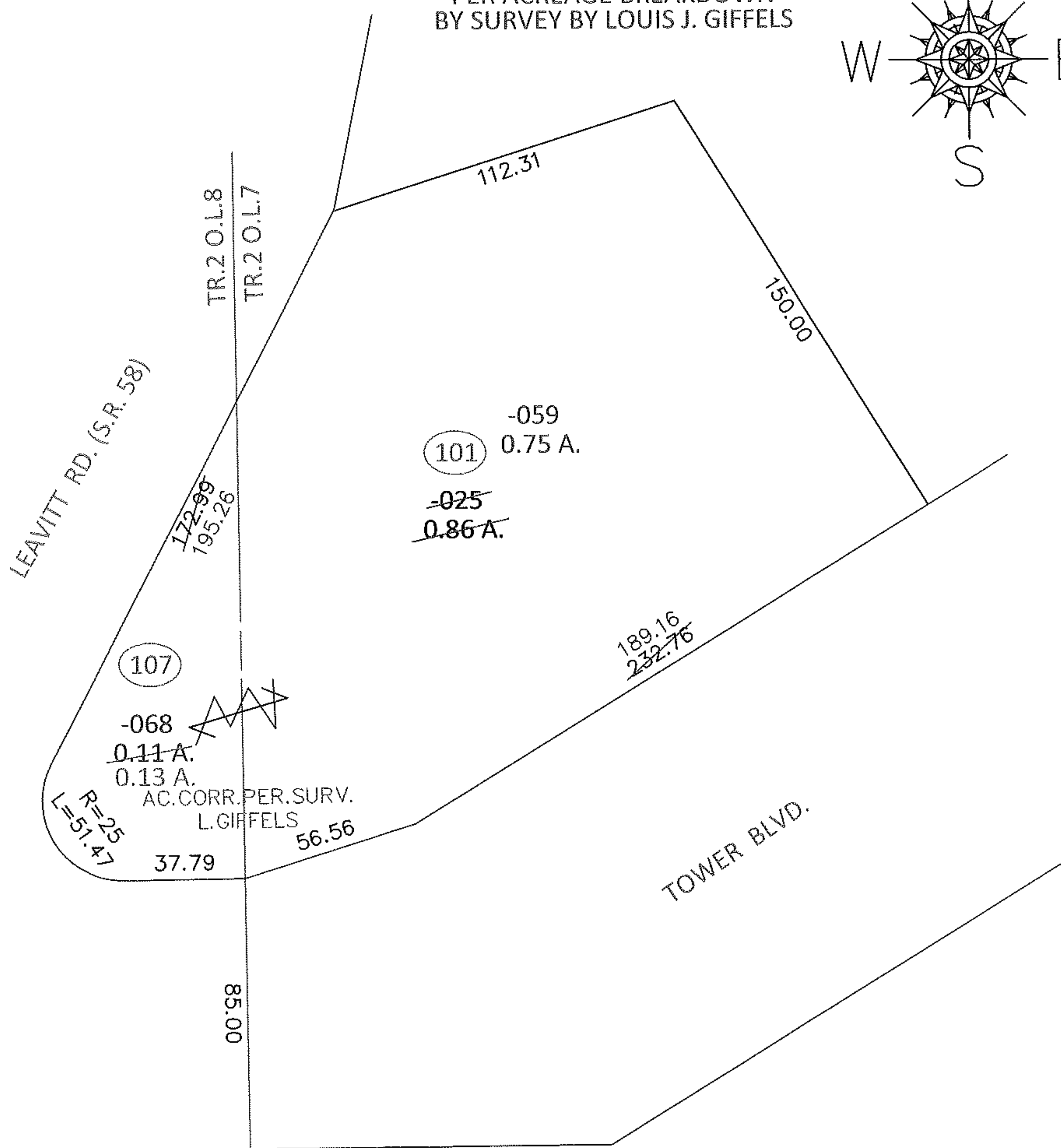
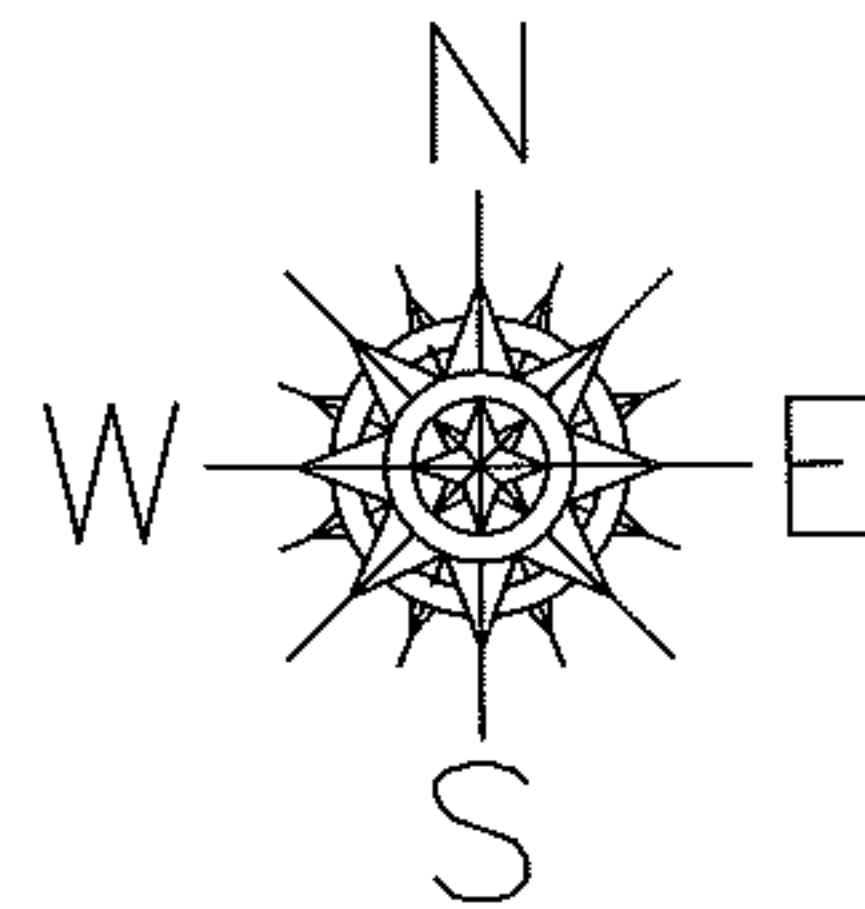
PARENT PARCEL: 02-02-007-101-025

CHILD PARCEL: 02-02-007-101-059, 02-02-008-107-068

13-02697-D

STARTING POINT: INTERSECTION OF SOUTH LINE OF TOWER BLVD. AND WEST LINE OF O.L.7

UNCOMBINATION
PER ACREAGE BREAKDOWN
BY SURVEY BY LOUIS J. GIFFELS



SPLITS/DEEDS PROCESSED

LORAIN COUNTY TAX MAP DEPARTMENT
226 MIDDLE AVE. ELYRIA, OHIO

SURVEYED BY: LOUIS J. GIFFELS
CLOSURE: .01:10,000
MAP PAGE(S): 2-02-007-A
APPROVED BY: RRM DATE: 3-26-13
SCALE: 1"= 50' PRIOR INST.: 20110383712