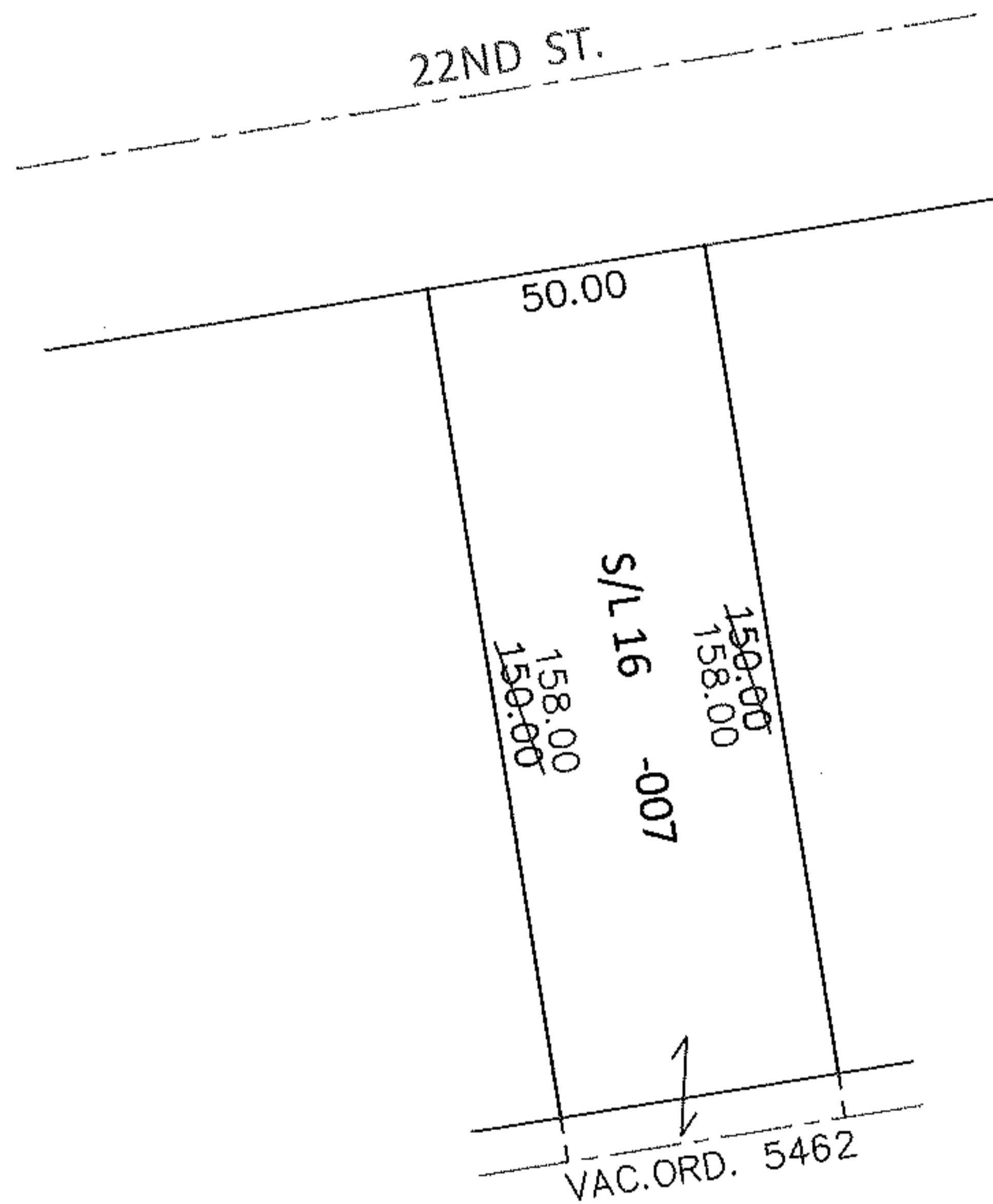
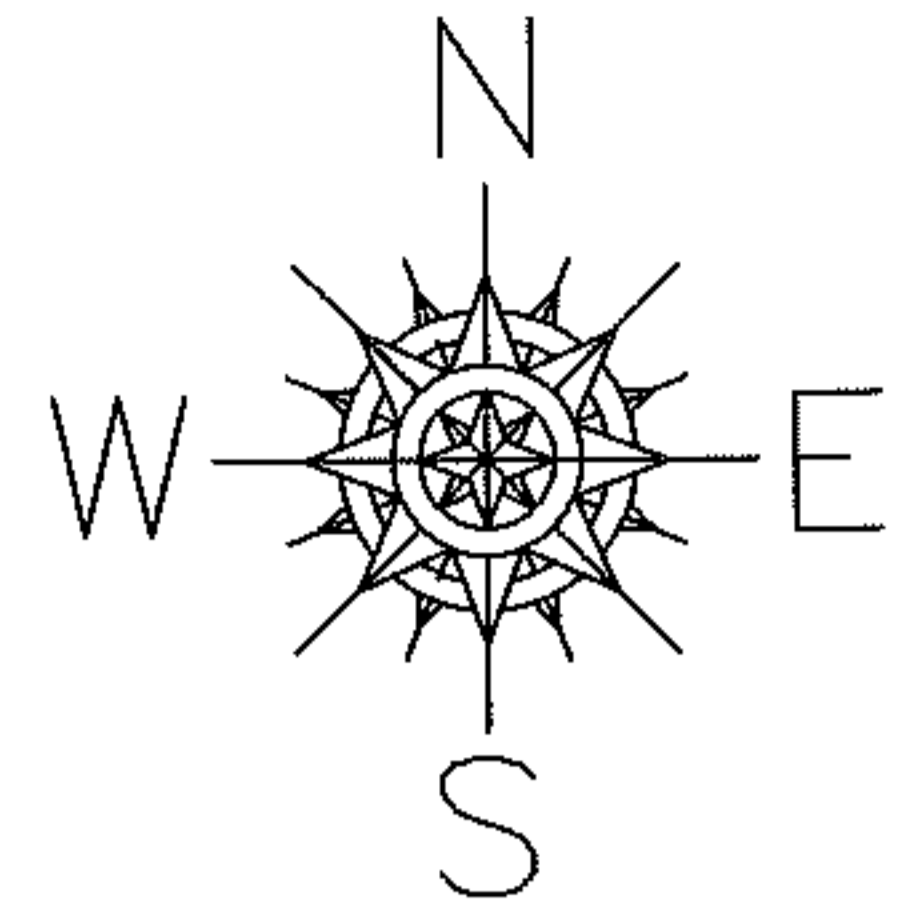


PARENT PARCEL: 02-01-003-171-007

CHILD PARCEL: _____

13-02692-C

STARTING POINT: S/L 16 IN BLOCK 11 OF HOGAN'S 3RD ADD. (VOL.3 PG.31)



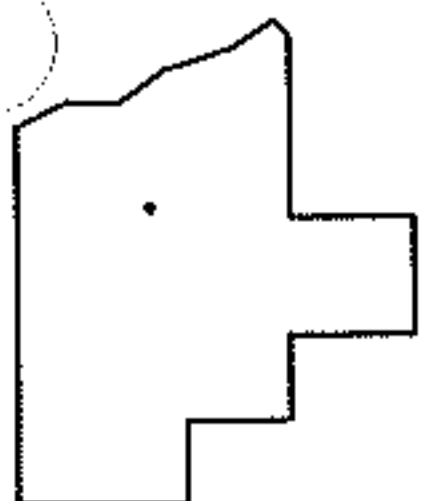
DEPTH CORRECTION

02-01-003-171-007

158

50 X ~~150~~

PER PRIOR DEEDS AND ORD. NO. 5462



SPLITS/DEEDS PROCESSED

LORAIN COUNTY TAX MAP DEPARTMENT
226 MIDDLE AVE. ELYRIA, OHIO

SURVEYED BY: N/A

CLOSURE: N/A

MAP PAGE(S): 2-01-003-G

APPROVED BY: RRM DATE: 3-19-13

SCALE: 1"= 50' PRIOR INST.: 20020807023