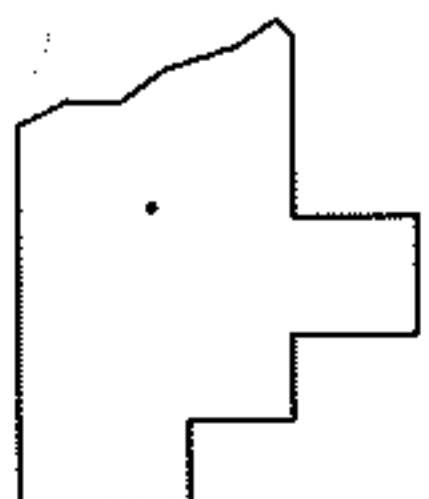
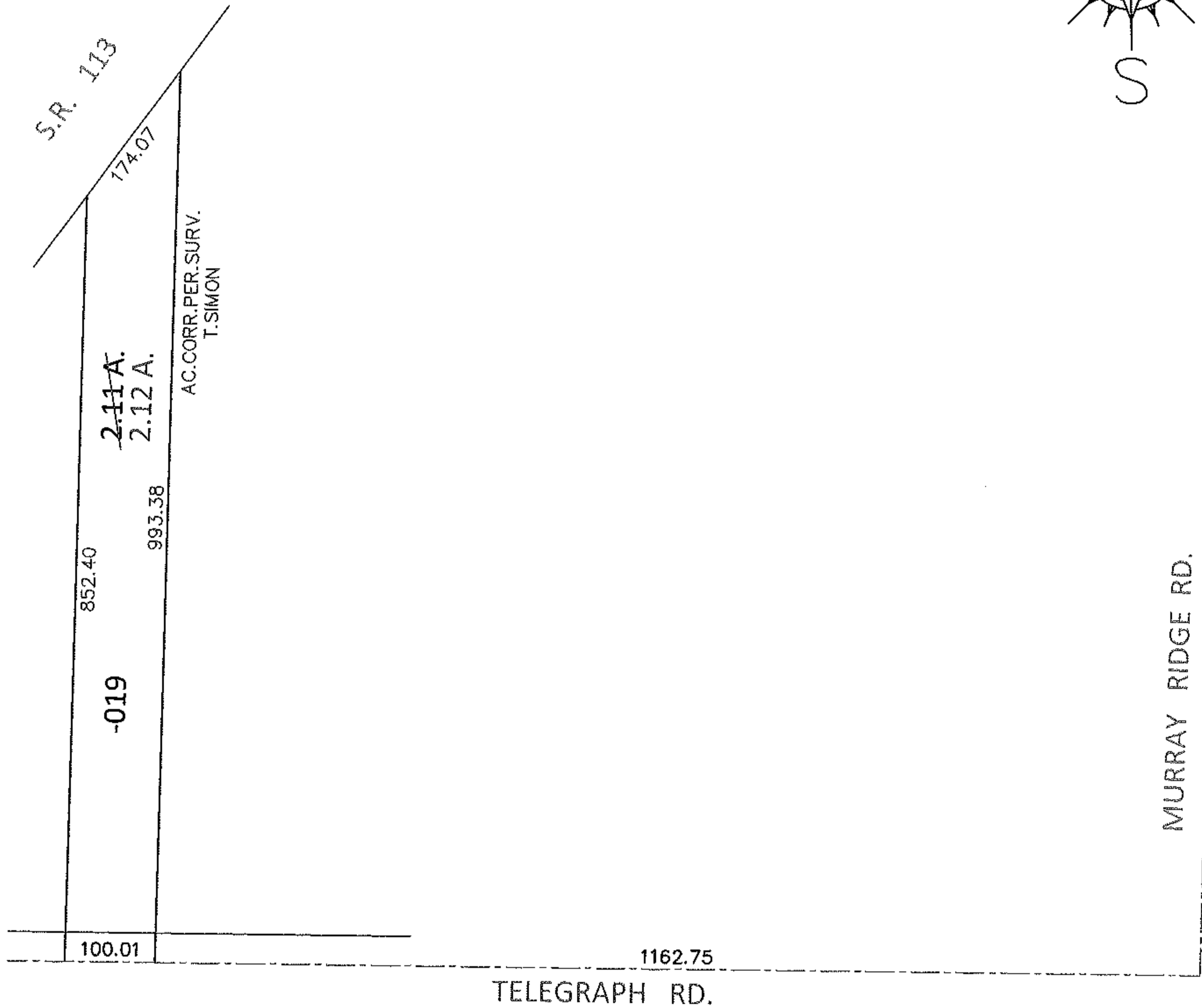
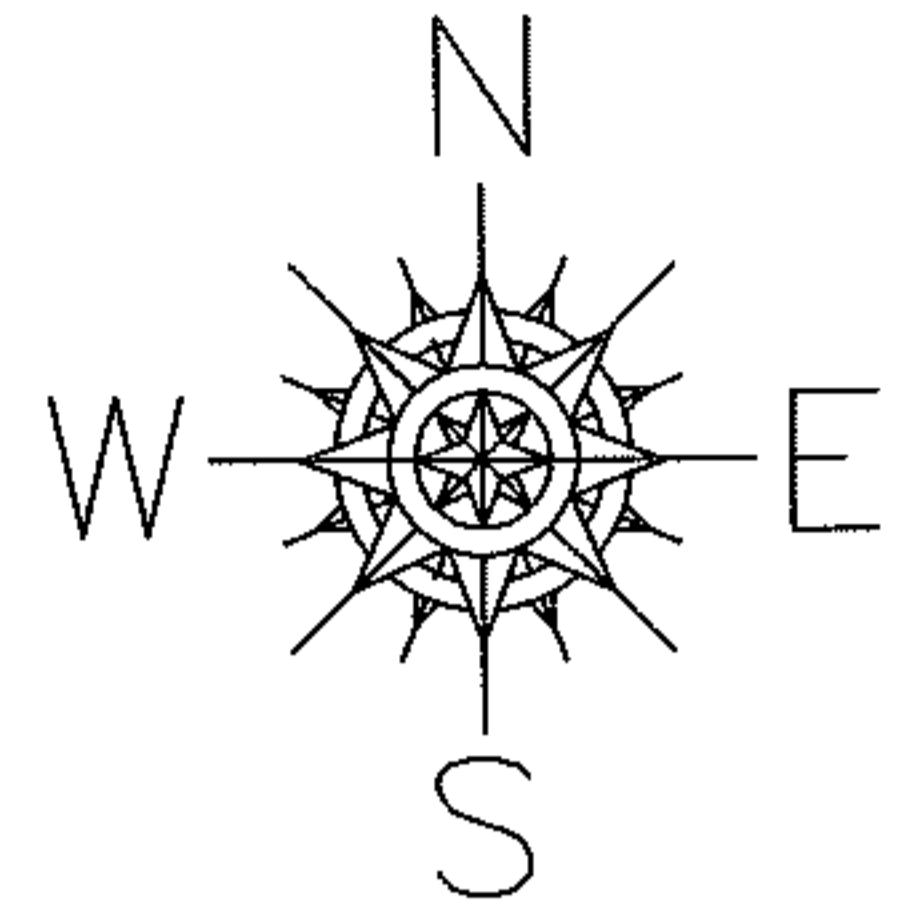


PARENT PARCEL: 06-24-020-000-019

CHILD PARCEL:

13-02688-A

STARTING POINT: INTERSECTION OF C/L OF TELEGRAPH RD. AND C/L OF MURRAY RIDGE RD.



SPLITS/DEEDS PROCESSED

LORAIN COUNTY TAX MAP DEPARTMENT
226 MIDDLE AVE. ELYRIA, OHIO

SURVEYED BY: THOMAS A. SIMON

CLOSURE: .01:10,000

MAP PAGE(S): 6-75, 6-93

APPROVED BY: RRM DATE: 3-15-13

SCALE: 1"= 200 PRIOR INST.: 20120412546