

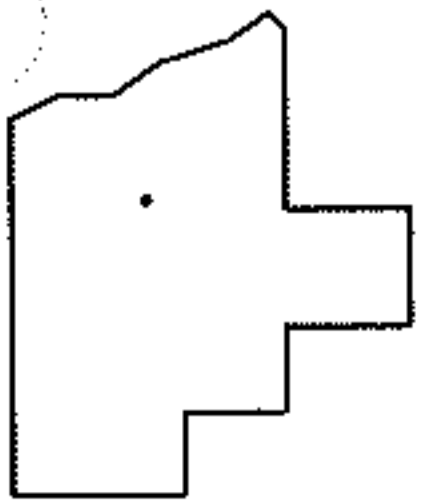
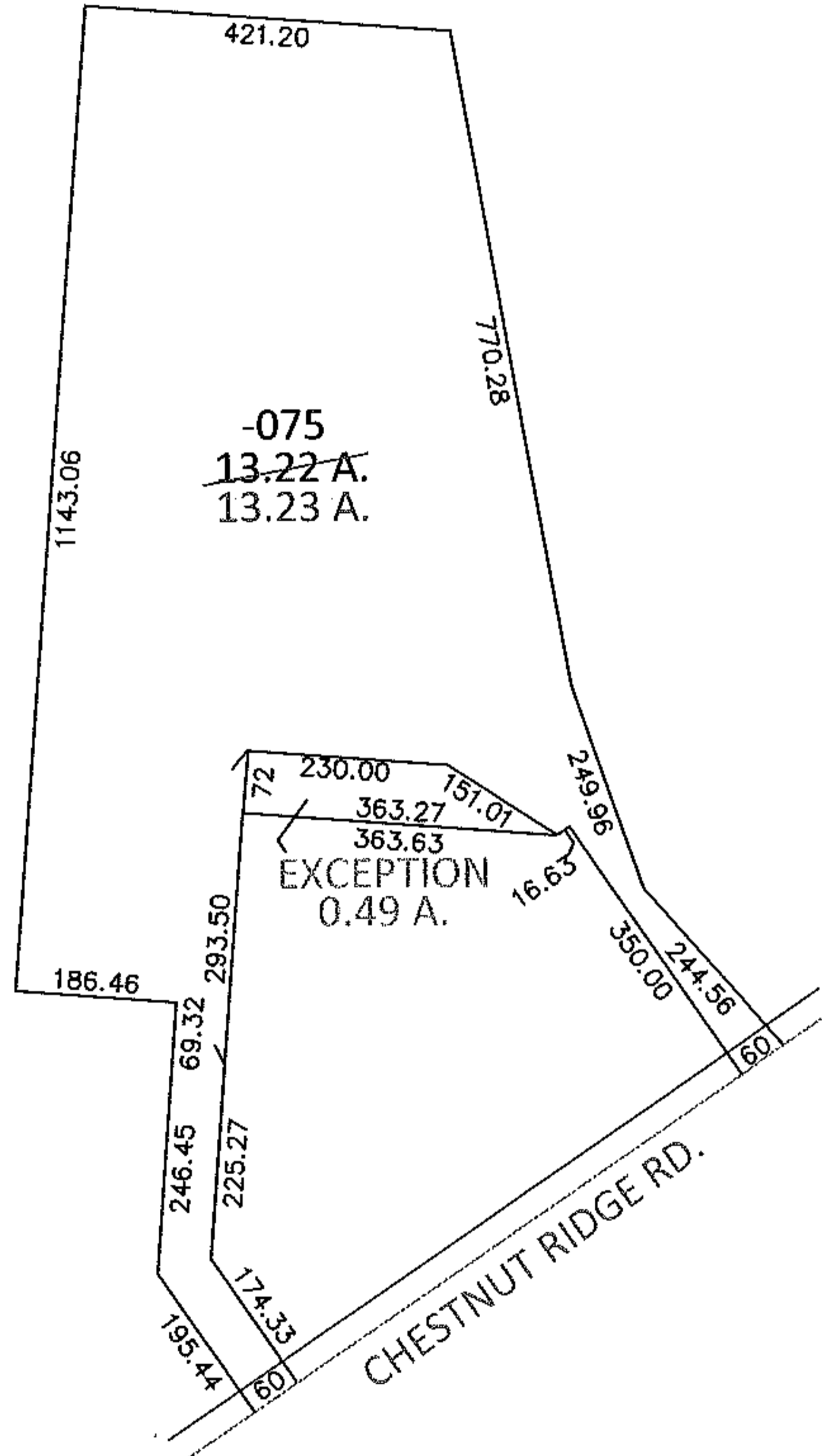
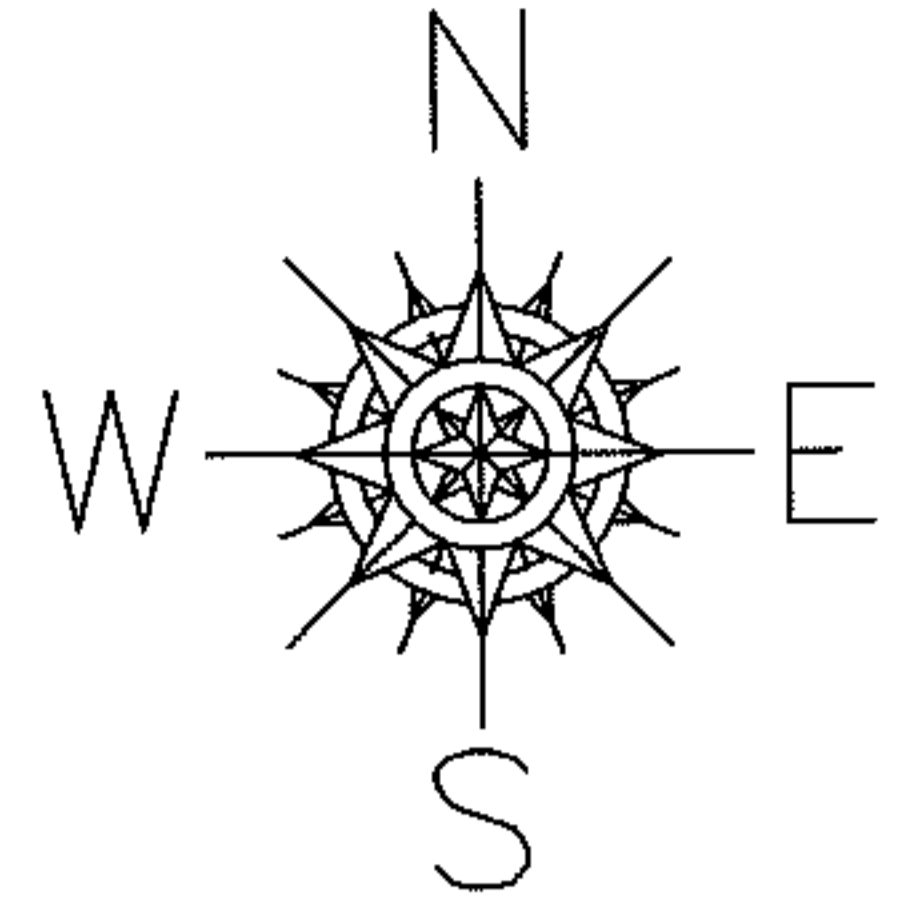
PARENT PARCEL: 07-00-025-101-075

13-02686-A

CHILD PARCEL:

STARTING POINT: MOST SOUTHERLY CORNER OF LAND CONVEYED TO HILDA C. GERHART AND VIRGINIA H. SMITH (DV 738/582)

MAP CORRECTION ONLY



SPLITS/DEEDS PROCESSED

LORAIN COUNTY TAX MAP DEPARTMENT  
226 MIDDLE AVE. ELYRIA, OHIO

SURVEYED BY: GARY E. PENFOUND & BRIAN P. MCCARTNEY

CLOSURE: .01:10,000

MAP PAGE(S): 7-00-025-A

APPROVED BY: RRM DATE: 3-14-13

SCALE: 1"= 300 PRIOR INST.: 20130451183