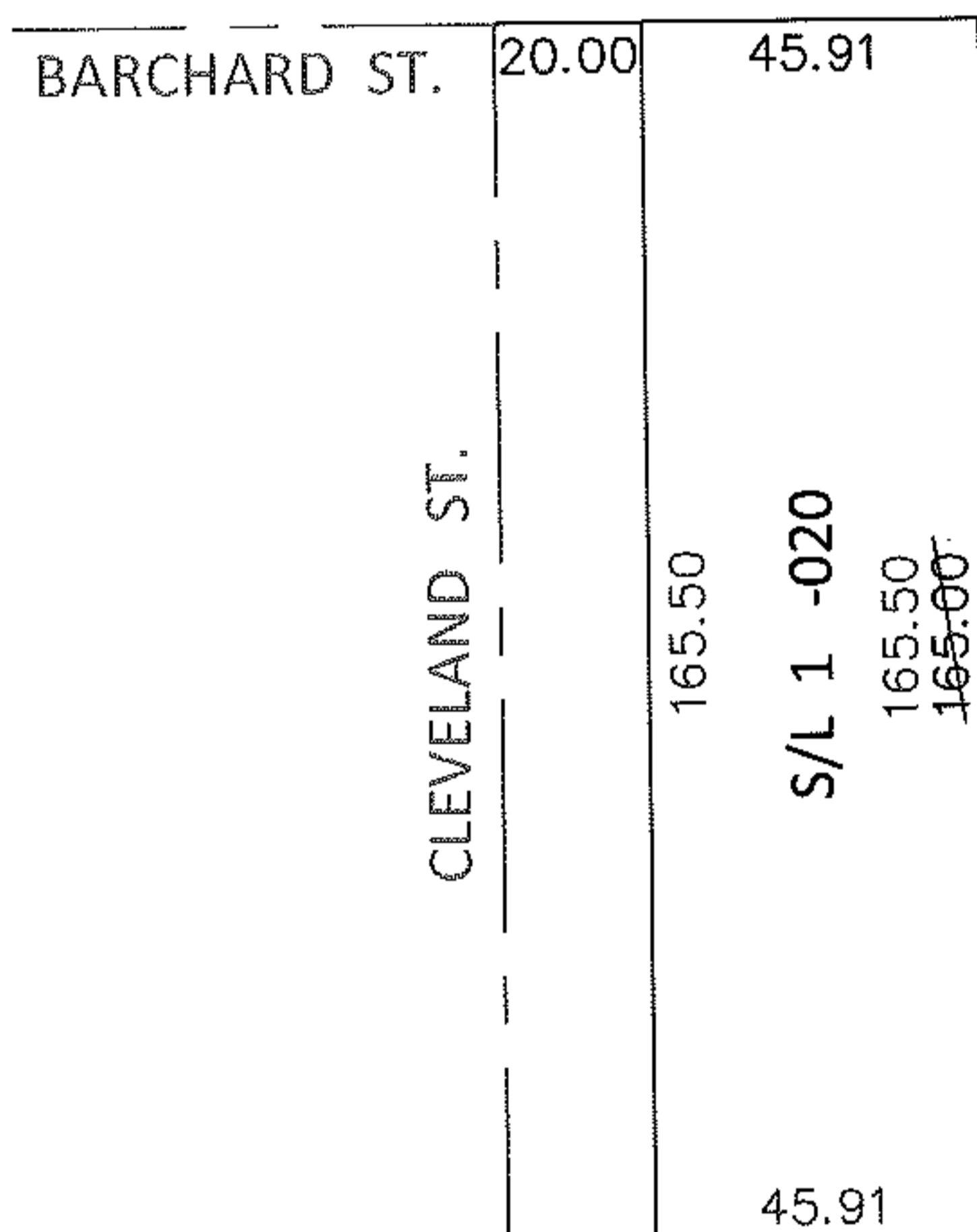
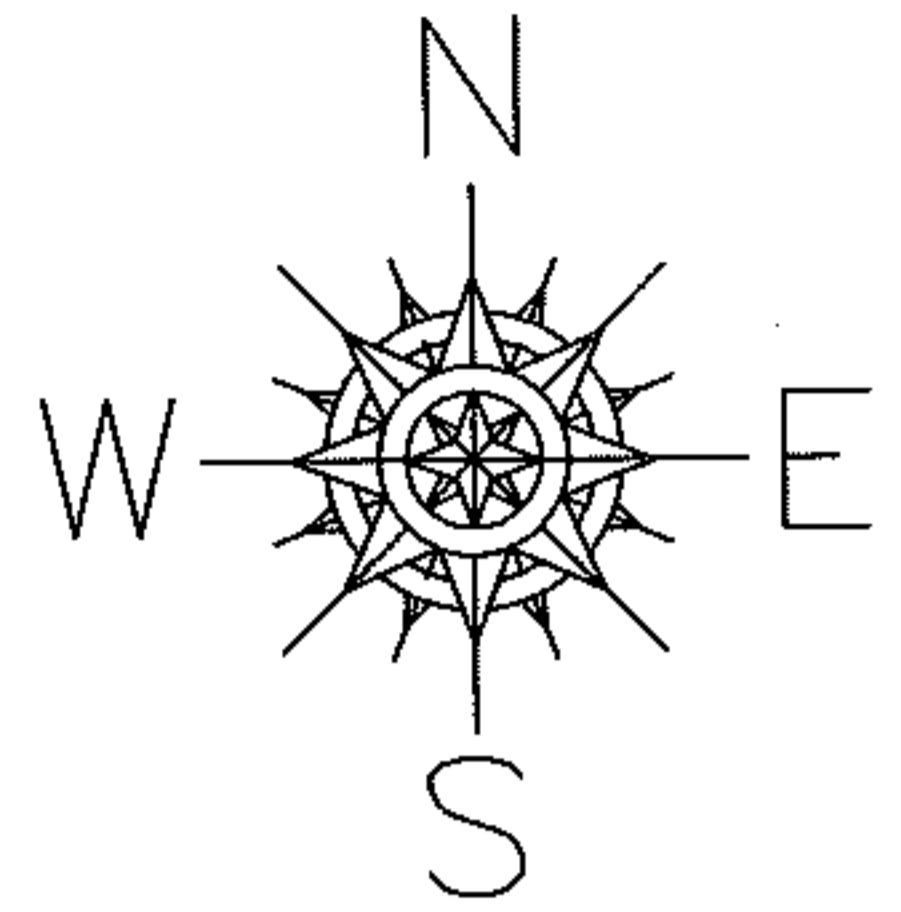


PARENT PARCEL: 11-00-081-102-020

CHILD PARCEL: _____

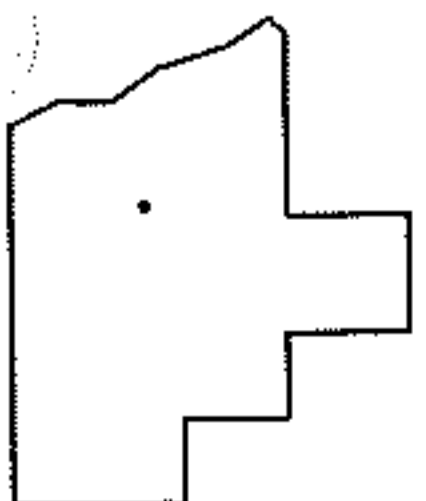
13-02683-D

STARTING POINT: INTERSECTION OF C/L OF BARCHARD ST. AND C/L OF CLEVELAND ST.



FRONTAGE AND DEPTH CORRECTION

11-00-081-102-020
45.91 X 165.50
~~66 X 165~~
PER SURV. T.SIMON



SPLITS/DEEDS PROCESSED

LORAIN COUNTY TAX MAP DEPARTMENT
226 MIDDLE AVE. ELYRIA, OHIO

SURVEYED BY: THOMAS A. SIMON

CLOSURE: .00:10,000

MAP PAGE(S): 11-00-081

APPROVED BY: RRM DATE: 3-13-13

SCALE: 1"= 50' PRIOR INST.: 20100347690