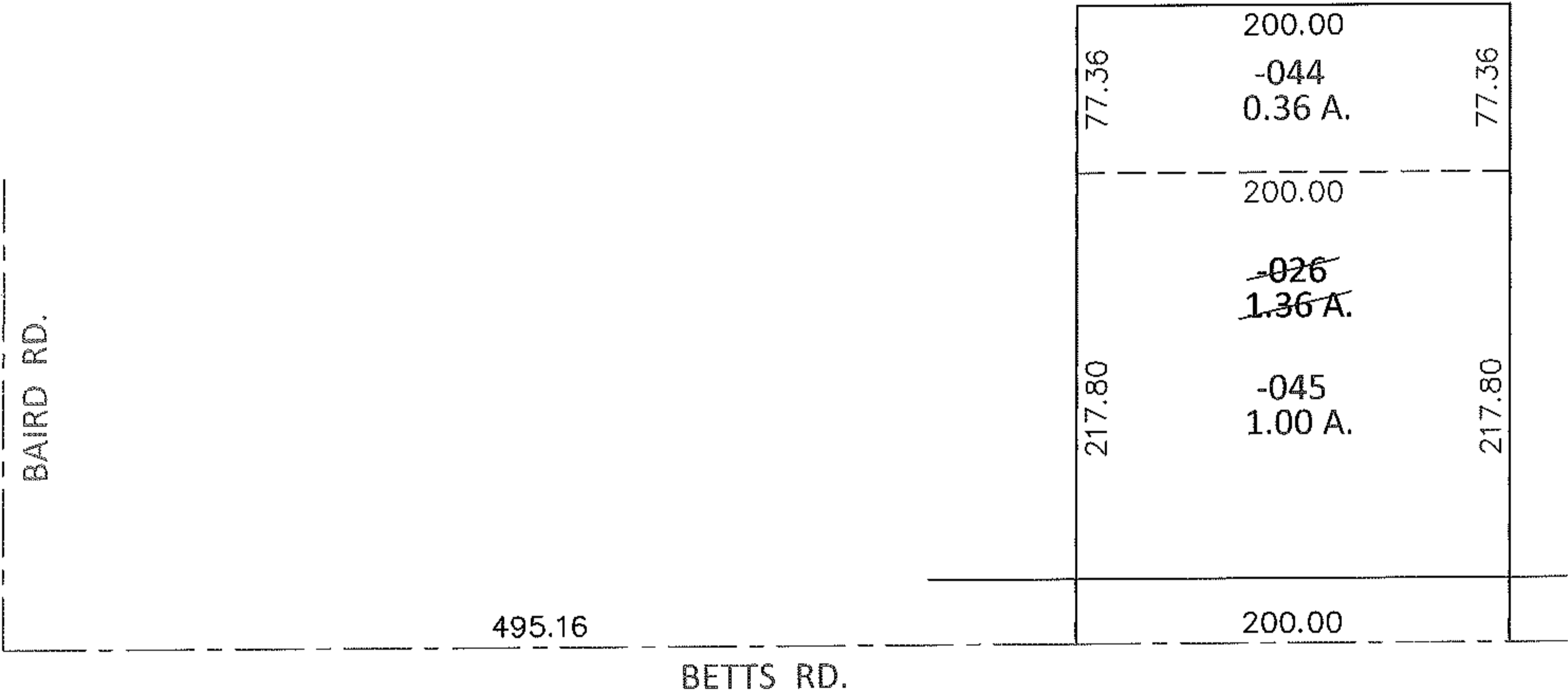
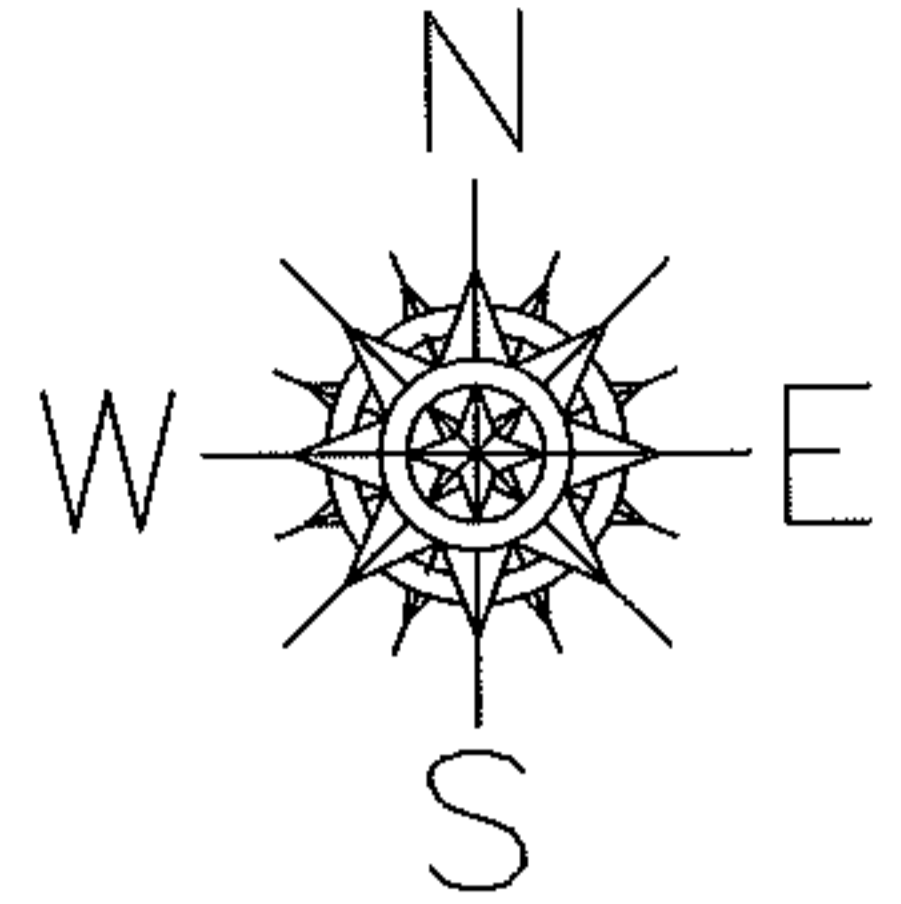


PARENT PARCEL: 13-09-034-000-026

CHILD PARCEL: 13-09-034-000-044, -045

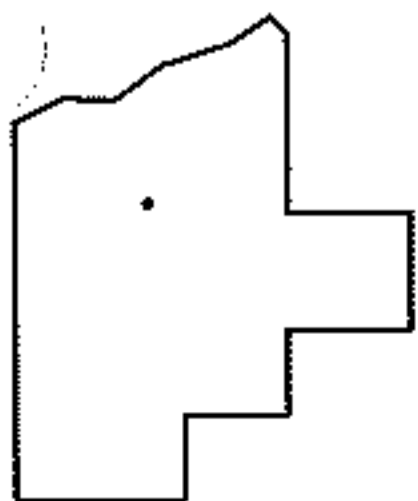
13-02679-U

STARTING POINT: INTERSECTION OF C/L OF BAIRD RD. AND C/L OF BETTS RD.



UNCOMBINATION  
TO REMOVE UPDATE LEGAL  
FOR 2 LEGALS, 1 PARCEL NO.

\*OR 184/318  
\*OR 1419/688



SPLITS/DEEDS PROCESSED

LORAIN COUNTY TAX MAP DEPARTMENT  
226 MIDDLE AVE. ELYRIA, OHIO

SURVEYED BY: N/A  
CLOSURE: N/A  
MAP PAGE(S): 13-F  
APPROVED BY: RRM DATE: 3-5-13  
SCALE: 1"=100 PRIOR INST.: \*SEE ABOVE