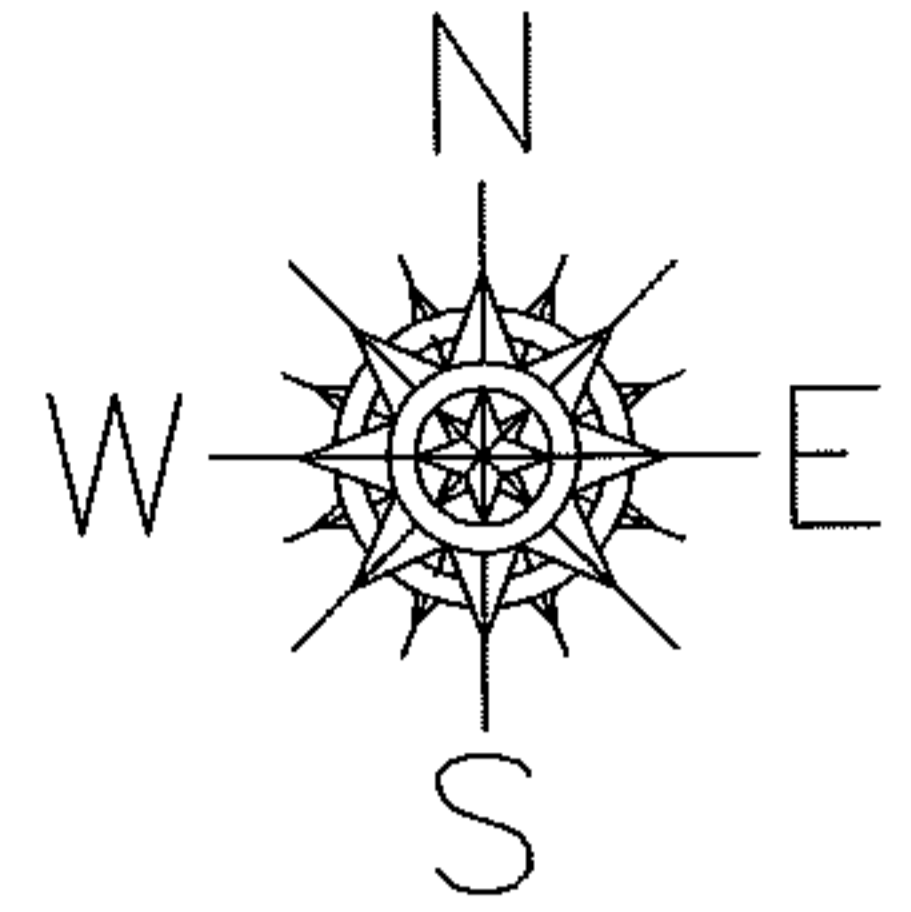


PARENT PARCEL: 12-00-015-000-073

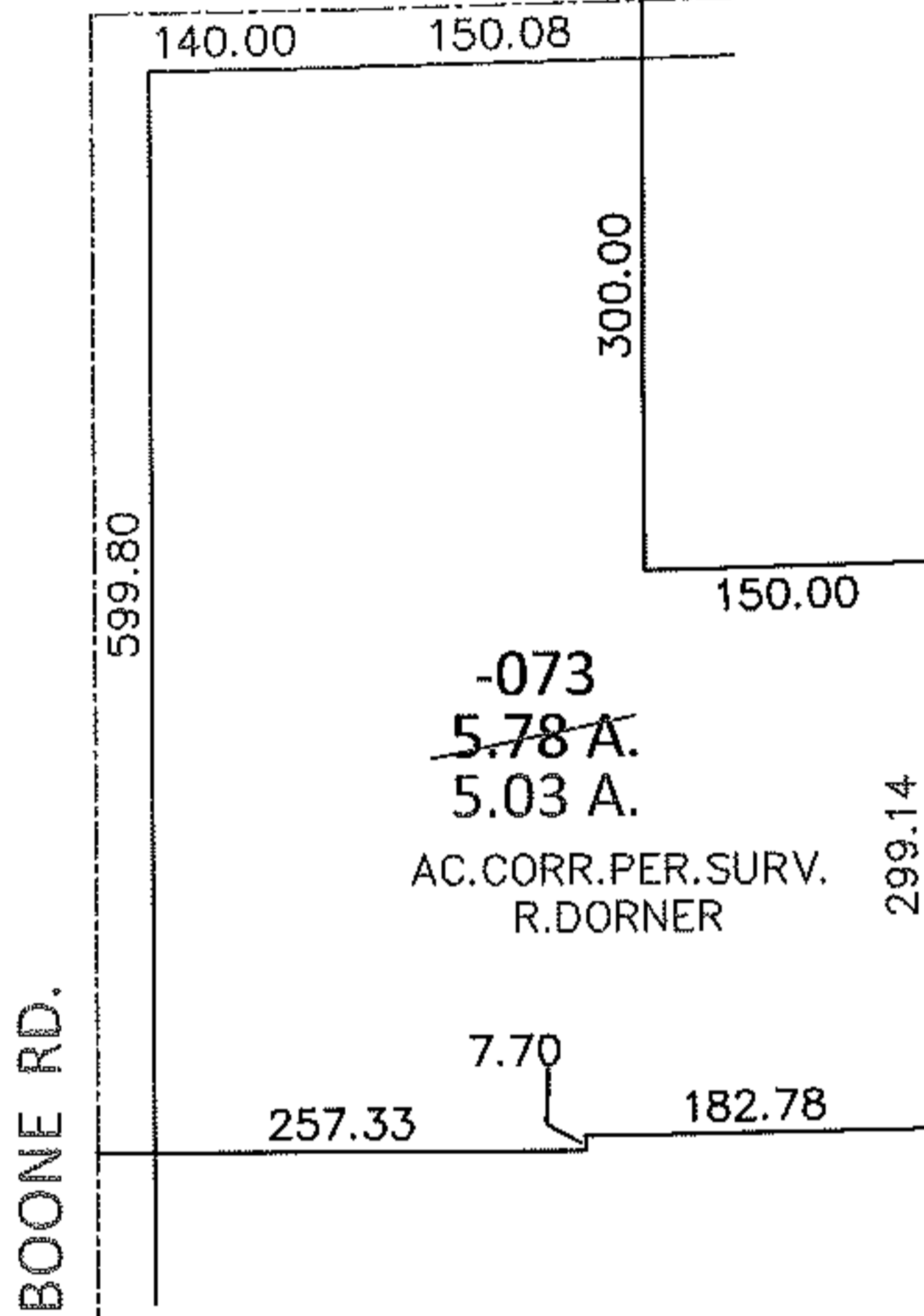
CHILD PARCEL: \_\_\_\_\_

13-02669-D

STARTING POINT: AT A MON BOX AT THE SOUTHWEST CORNER OF O.L.15



ELYRIA - TWINSBURG RD. (S.R. 82)



2176.65

SQUIRE RD. O.L.26 O.L.15

O.L.27 O.L.14

**SPLITS/DEEDS PROCESSED**

LORAIN COUNTY TAX MAP DEPARTMENT  
226 MIDDLE AVE. ELYRIA, OHIO

SURVEYED BY: ROBERT A. DORNER

CLOSURE: .01:10,000

MAP PAGE(S): 12-00-015-A

APPROVED BY: RRM DATE: 2-19-13

SCALE: 1" = 200 PRIOR INST.: DV 1137/870