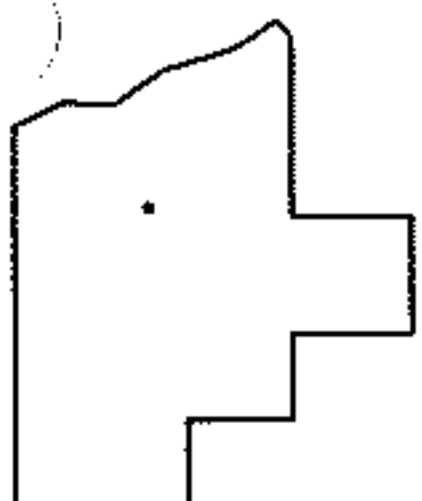
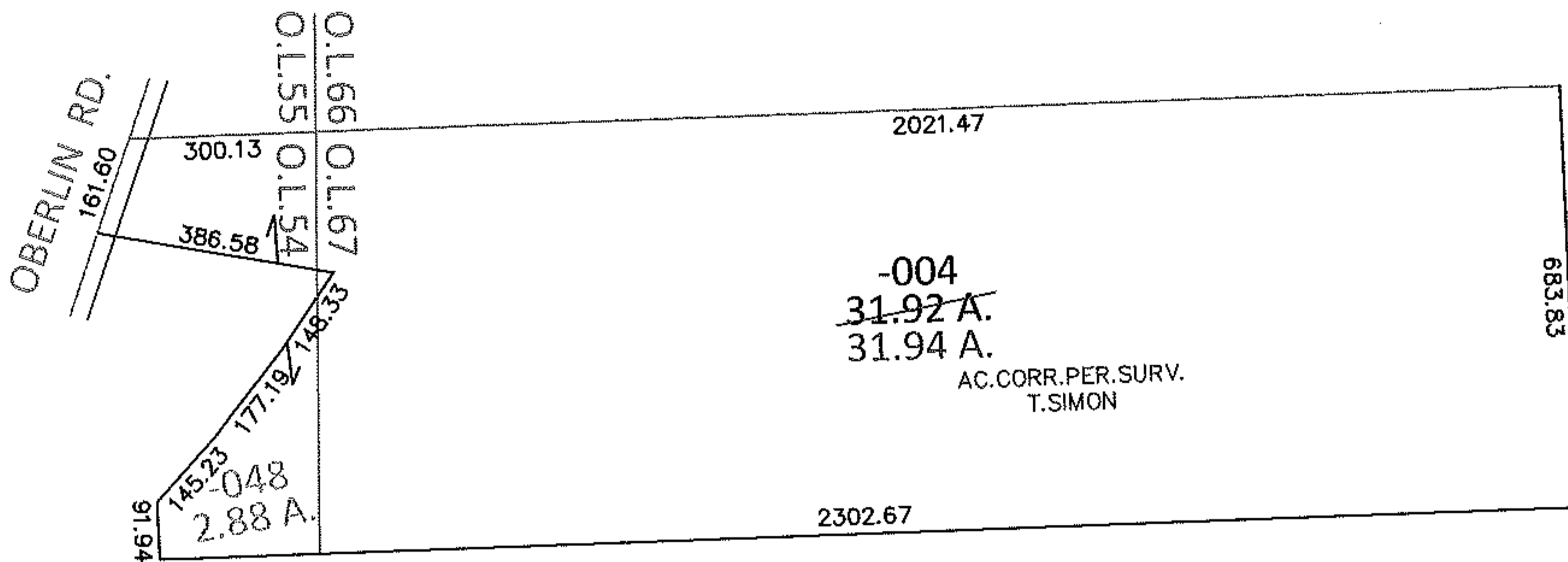
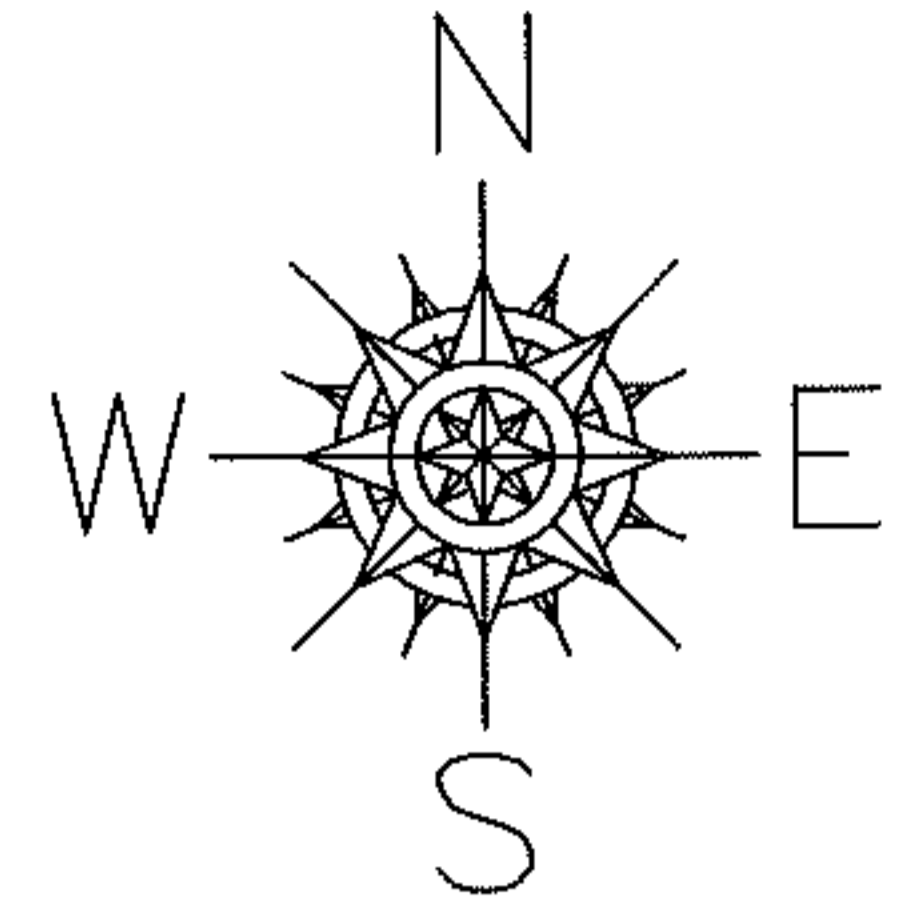


PARENT PARCEL: 05-00-054-000-048, 05-00-067-000-004

CHILD PARCEL:

STARTING POINT: NORTHWEST CORNER OF O.L.67

13-02667-A



SPLITS/DEEDS PROCESSED

LORAIN COUNTY TAX MAP DEPARTMENT
226 MIDDLE AVE. ELYRIA, OHIO

SURVEYED BY: THOMAS A. SIMON

CLOSURE: .01:10,000

MAP PAGE(S): 5-G, 5-H

APPROVED BY: RRM DATE: 2-14-13

SCALE: 1"= 400 PRIOR INST.: 20060127512