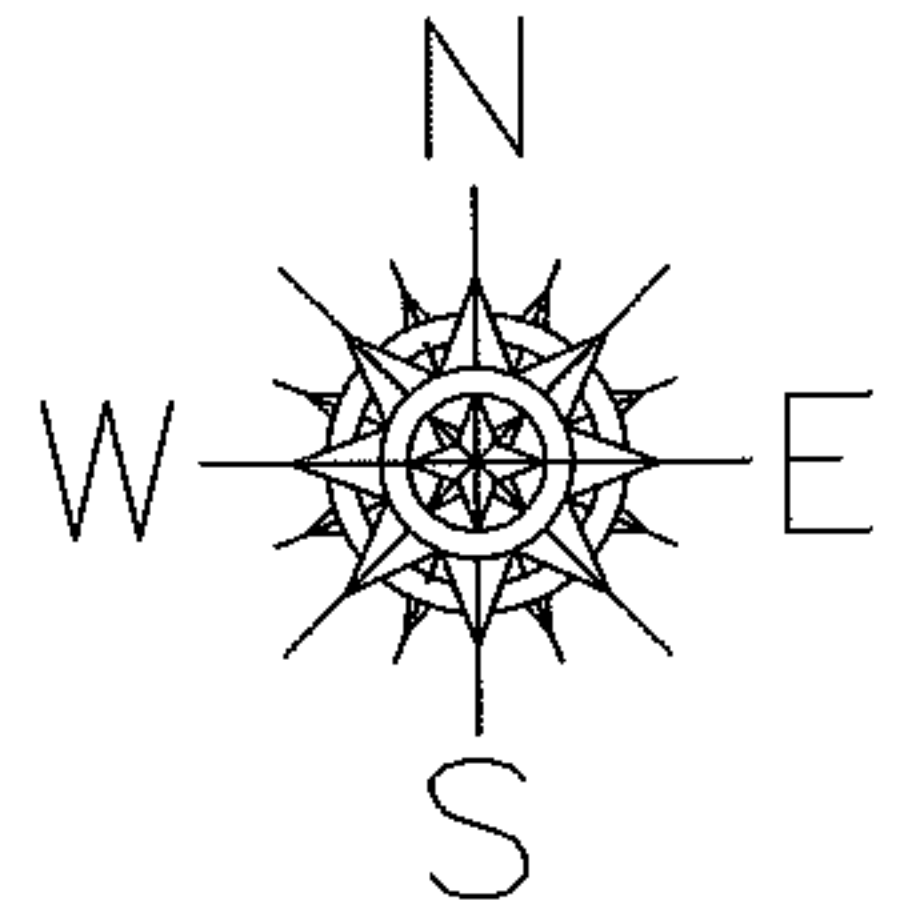
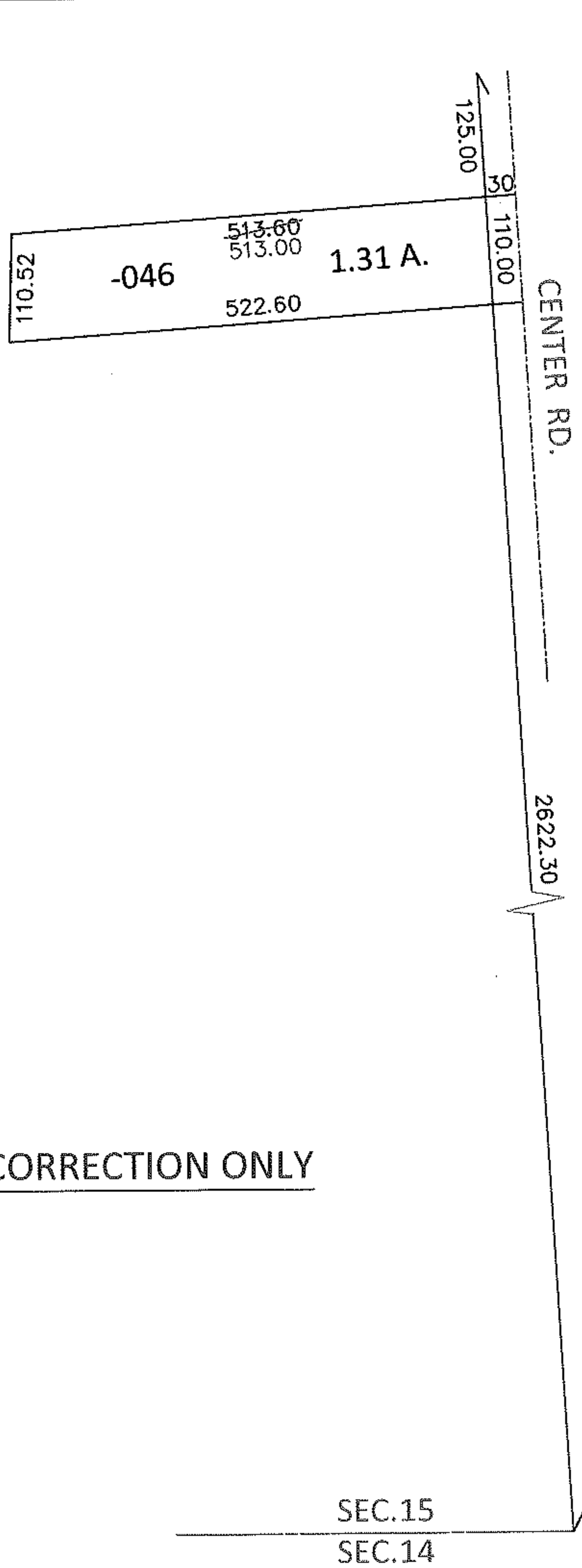


PARENT PARCEL: 04-00-015-109-046

CHILD PARCEL: _____

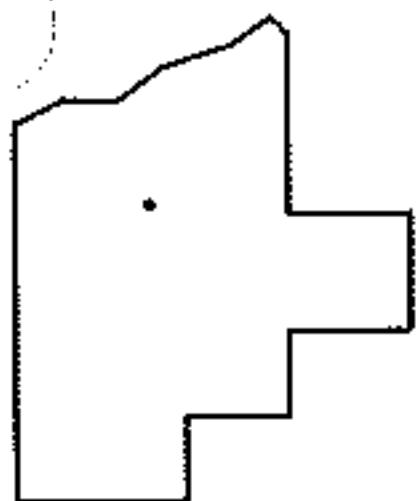
13-02661-D

STARTING POINT: INTERSECTION OF WEST LINE OF CENTER RD. AND SOUTH LINE OF SEC.15



MAP CORRECTION ONLY

SEC.15
SEC.14



SPLITS/DEEDS PROCESSED

LORAIN COUNTY TAX MAP DEPARTMENT
226 MIDDLE AVE. ELYRIA, OHIO

SURVEYED BY: SEAN A. BOLAND

CLOSURE: .00:10,000

MAP PAGE(S): 4-00-015-F

APPROVED BY: RRM DATE: 2-12-13

SCALE: 1"= 200 PRIOR INST.: 20050077440