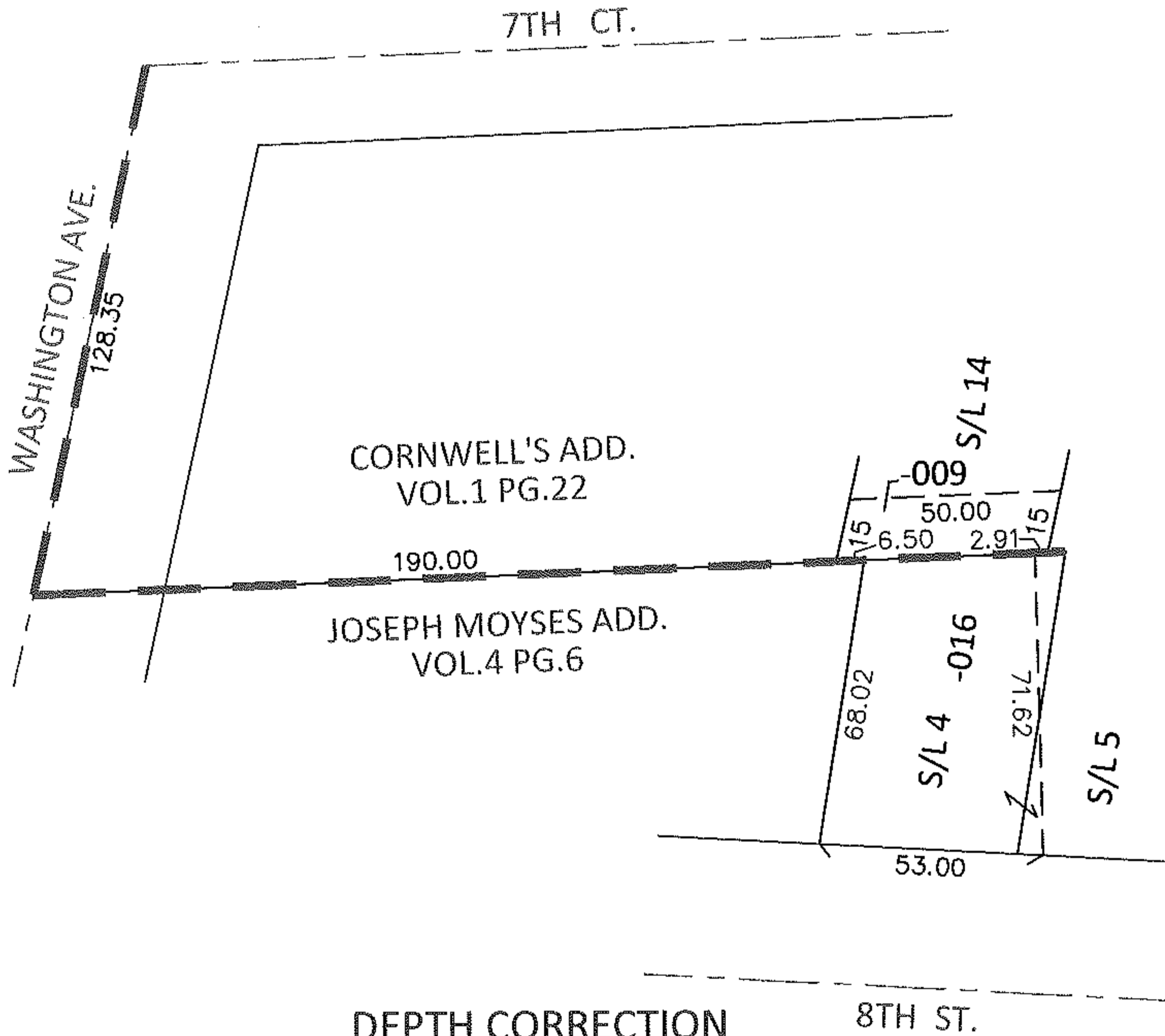
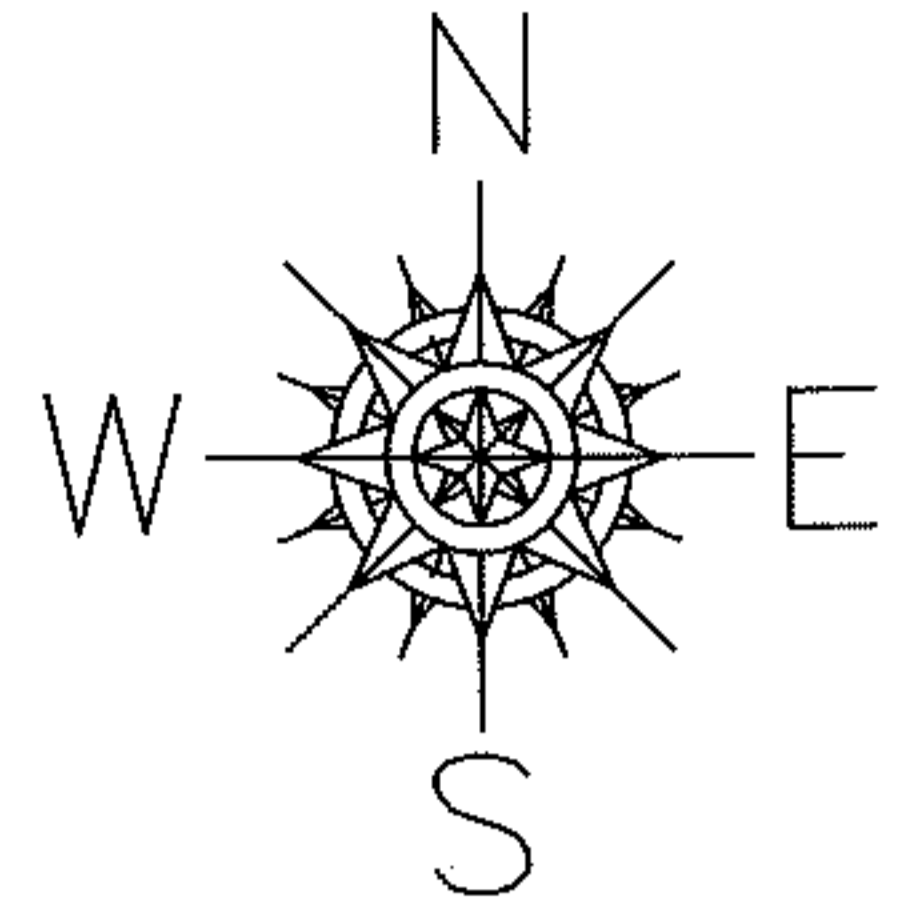


PARENT PARCEL: 02-01-005-115-009, -016

CHILD PARCEL: \_\_\_\_\_

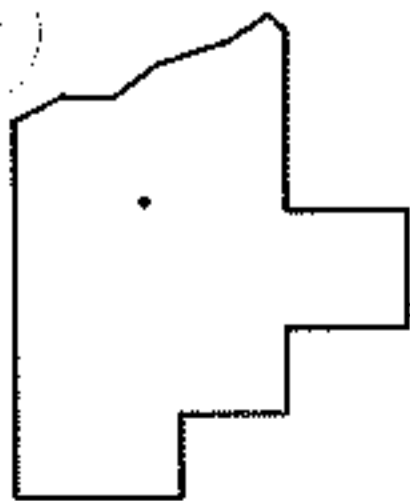
13-02654-C

STARTING POINT: INTERSECTION OF C/L OF 7TH CT. AND C/L OF WASHINGTON AVE.



DEPTH CORRECTION

02-01-005-115-016  
 71.62  
 53 X ~~75~~  
 CORR.PER.SURV.R.DORNER



SPLITS/DEEDS PROCESSED

LORAIN COUNTY TAX MAP DEPARTMENT  
 226 MIDDLE AVE. ELYRIA, OHIO

SURVEYED BY: ROBERT A. DORNER

CLOSURE: .01:10,000

MAP PAGE(S): 2-01-004-B

APPROVED BY: RRM DATE: 1-25-13

SCALE: 1"= 50' PRIOR INST.: 20120432314