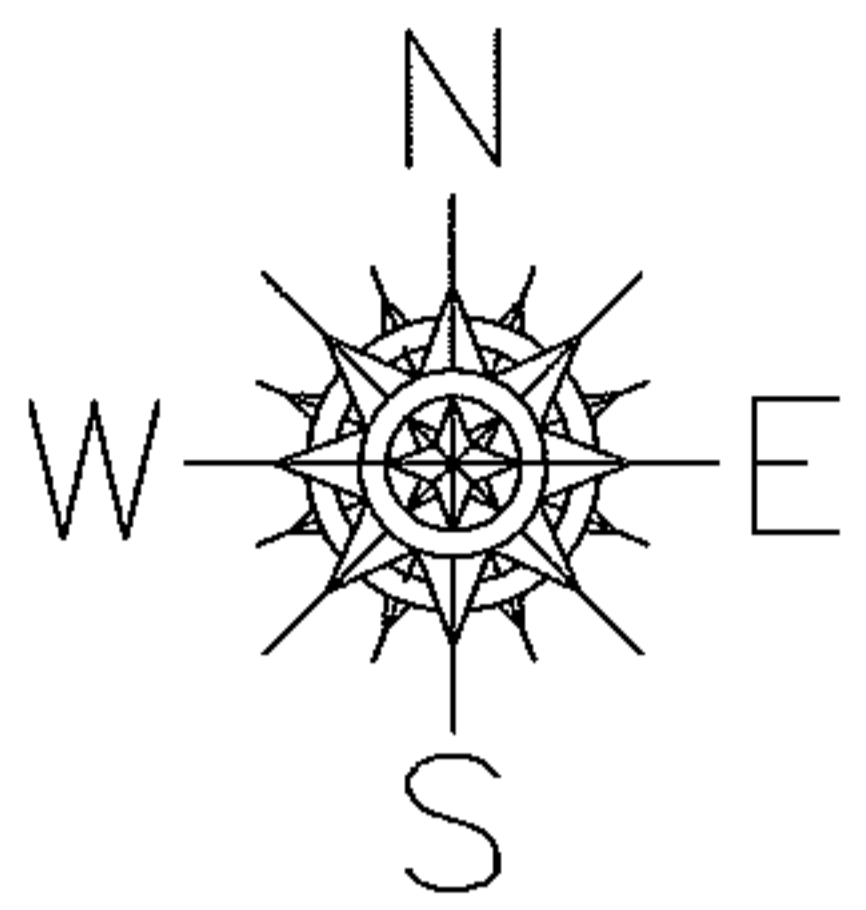
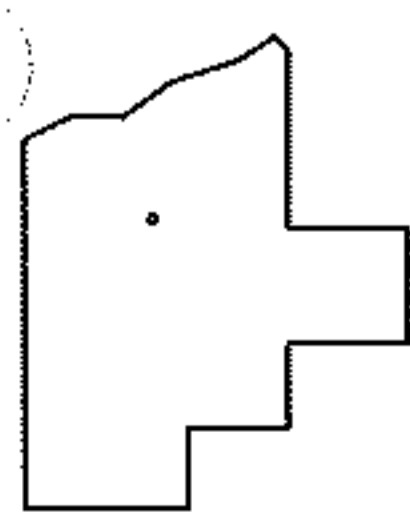
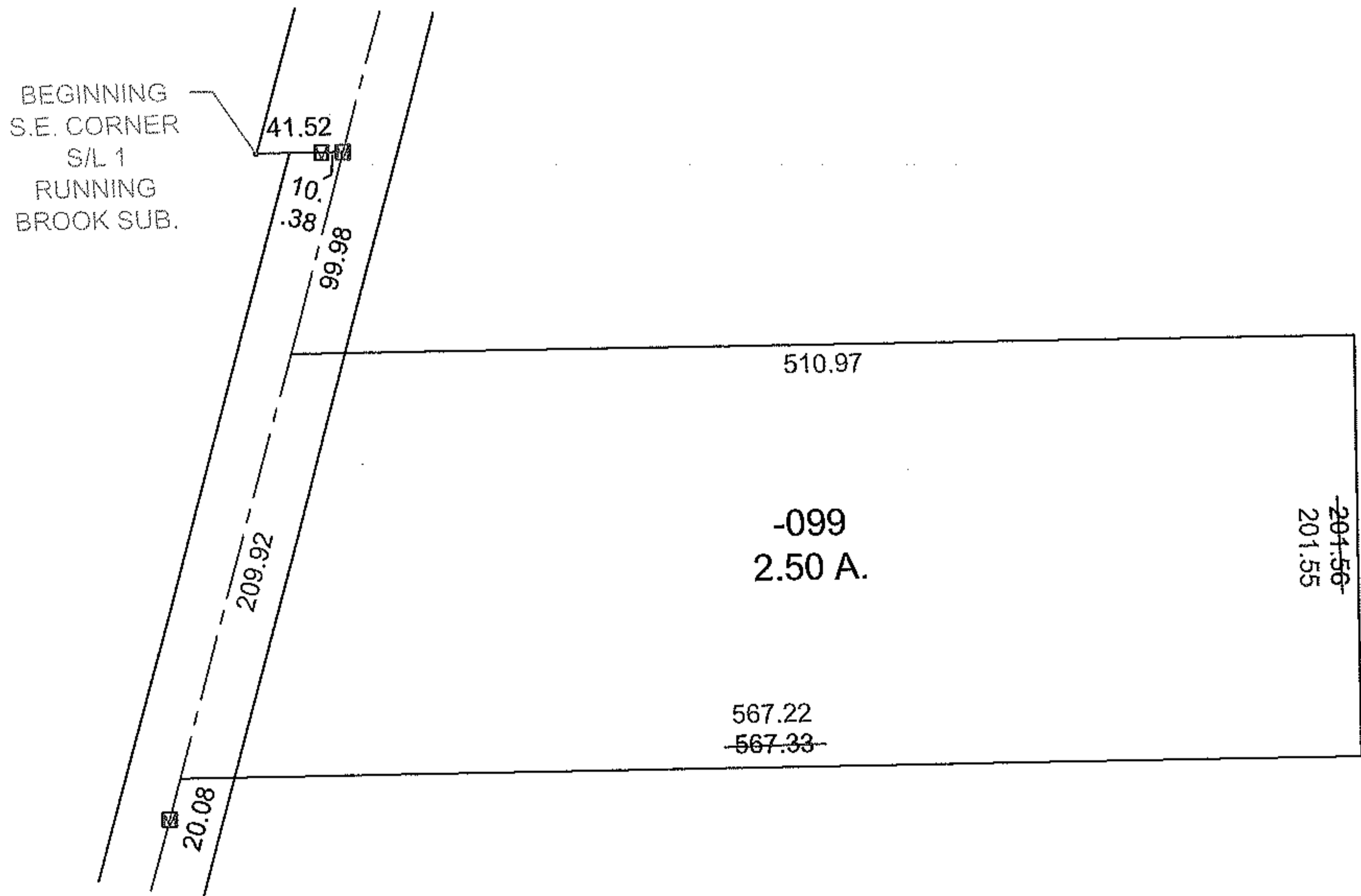


PARENT PARCEL: 07-00-045-110-099
CHILD PARCEL: XX-XX-XXX-XXX-XXX
STARTING POINT: I.P., S.E. CORNER OF S/L 1 IN RUNNING BROOK SUBDIVISION

13-02650-C



MAP CORRECTION ONLY



SPLITS/DEEDS PROCESSED

LORAIN COUNTY TAX MAP DEPARTMENT
226 MIDDLE AVE. ELYRIA, OHIO

SURVEYED BY: SCOTT J. CASEY
CLOSURE: 0.01 : 10,000
MAP PAGE(S): 7-00-045-D
APPROVED BY: TJS DATE: 1/16/13
SCALE: 1"= 100 PRIOR INST.: 20120428596