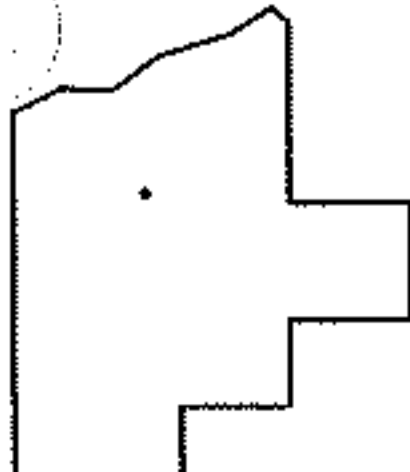
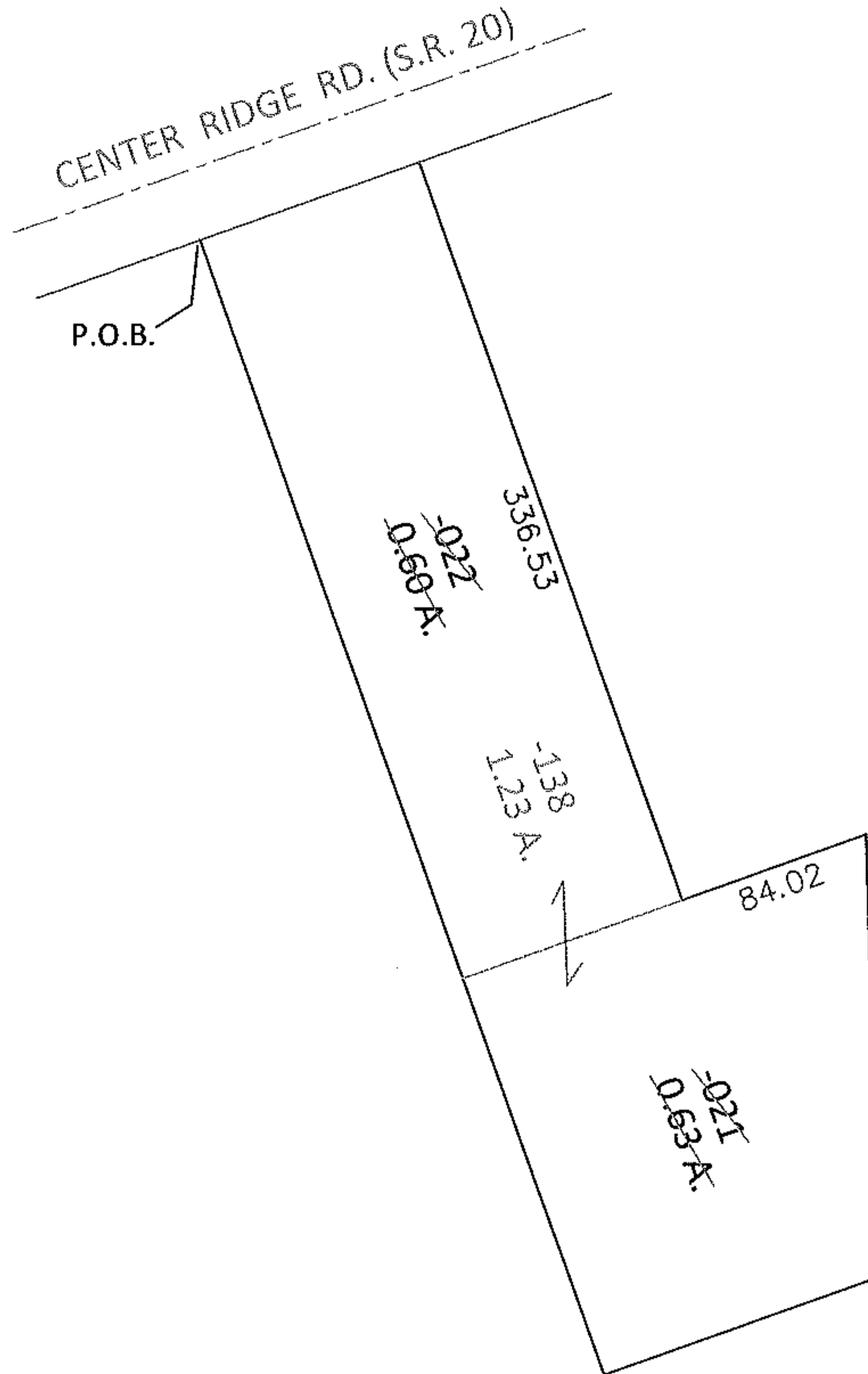
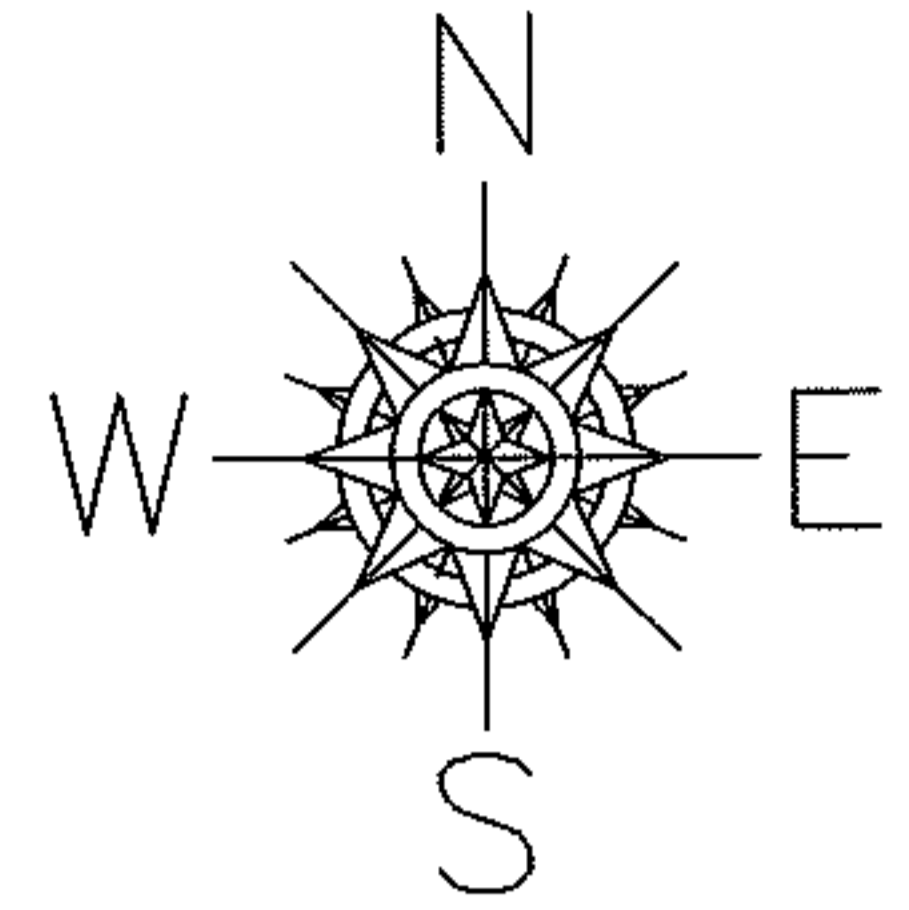


PARENT PARCEL: 07-00-028-103-021, -022

CHILD PARCEL: 07-00-028-103-138

STARTING POINT: NORTHEAST CORNER OF LAND CONVEYED TO ERNEST C. & SUSIE A. FERGUSON(DV. 273 PG.175)

13-02646-X



SPLITS/DEEDS PROCESSED

LORAIN COUNTY TAX MAP DEPARTMENT
226 MIDDLE AVE. ELYRIA, OHIO

SURVEYED BY: N/A

CLOSURE: N/A

MAP PAGE(S): 7-00-028-D

APPROVED BY: RRM DATE: 1-11-13

SCALE: 1"= 100 PRIOR INST.: 20100356440