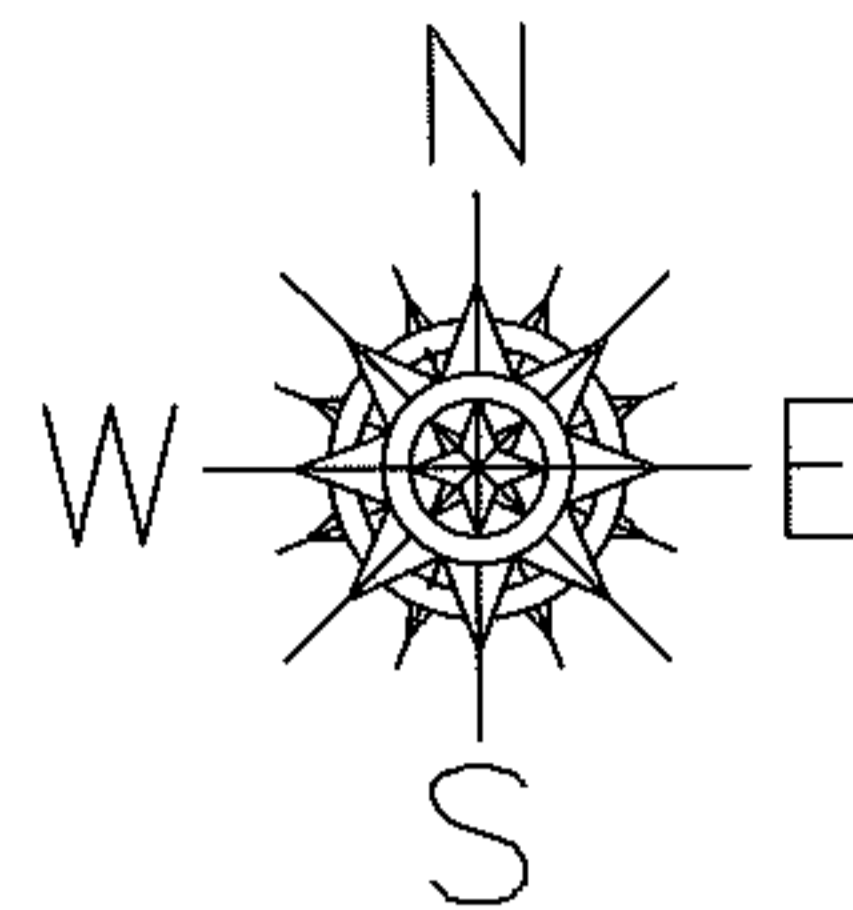


PARENT PARCEL: 06-25-065-000-005

CHILD PARCEL:

12-02639-D

STARTING POINT: INTERSECTION OF NORTH LINE OF BAILEY CT. AND EAST LINE OF RIDGE ST.



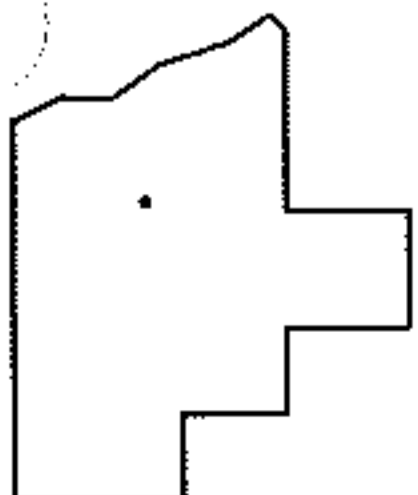
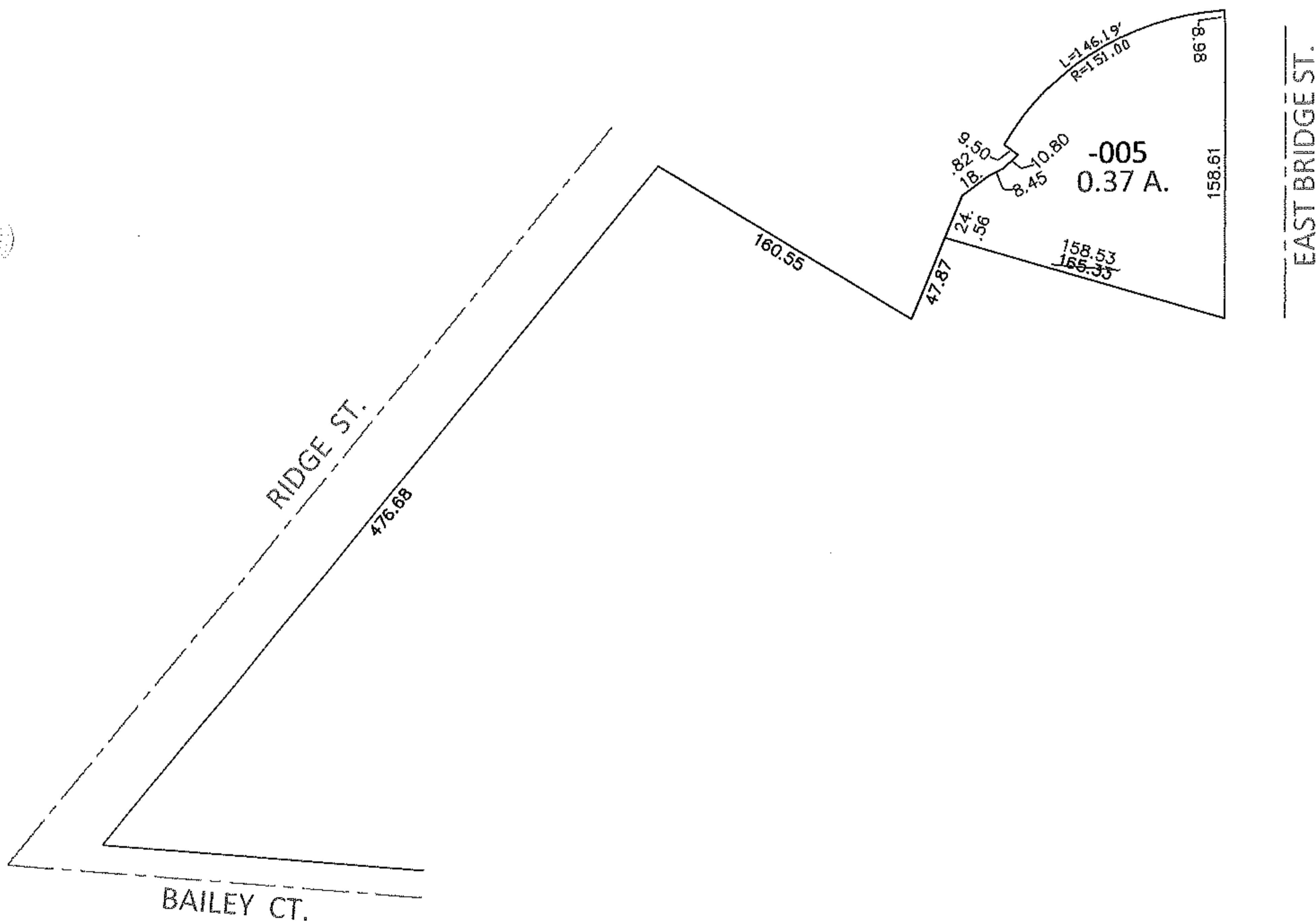
FRONTAGE AND DEPTH TO ACREAGE CORRECTION

06-25-065-000-005

0.37 A.

~~163.33 X~~

PER SURV. BY A.KELLY



SPLITS/DEEDS PROCESSED

LORAIN COUNTY TAX MAP DEPARTMENT
226 MIDDLE AVE. ELYRIA, OHIO

SURVEYED BY: AMY M. KELLY

CLOSURE: .01:10,000

MAP PAGE(S): 6-103

APPROVED BY: RRM DATE: 12-27-12

SCALE: 1"= 100 PRIOR INST.: 2012090472