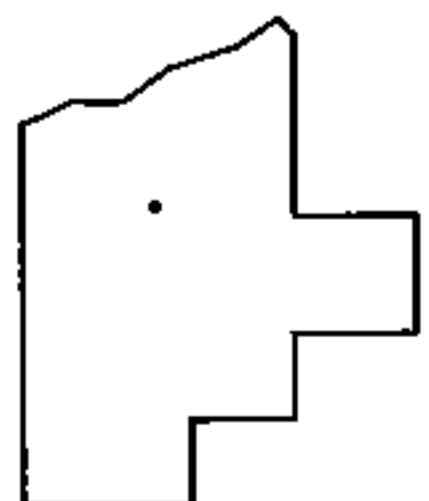
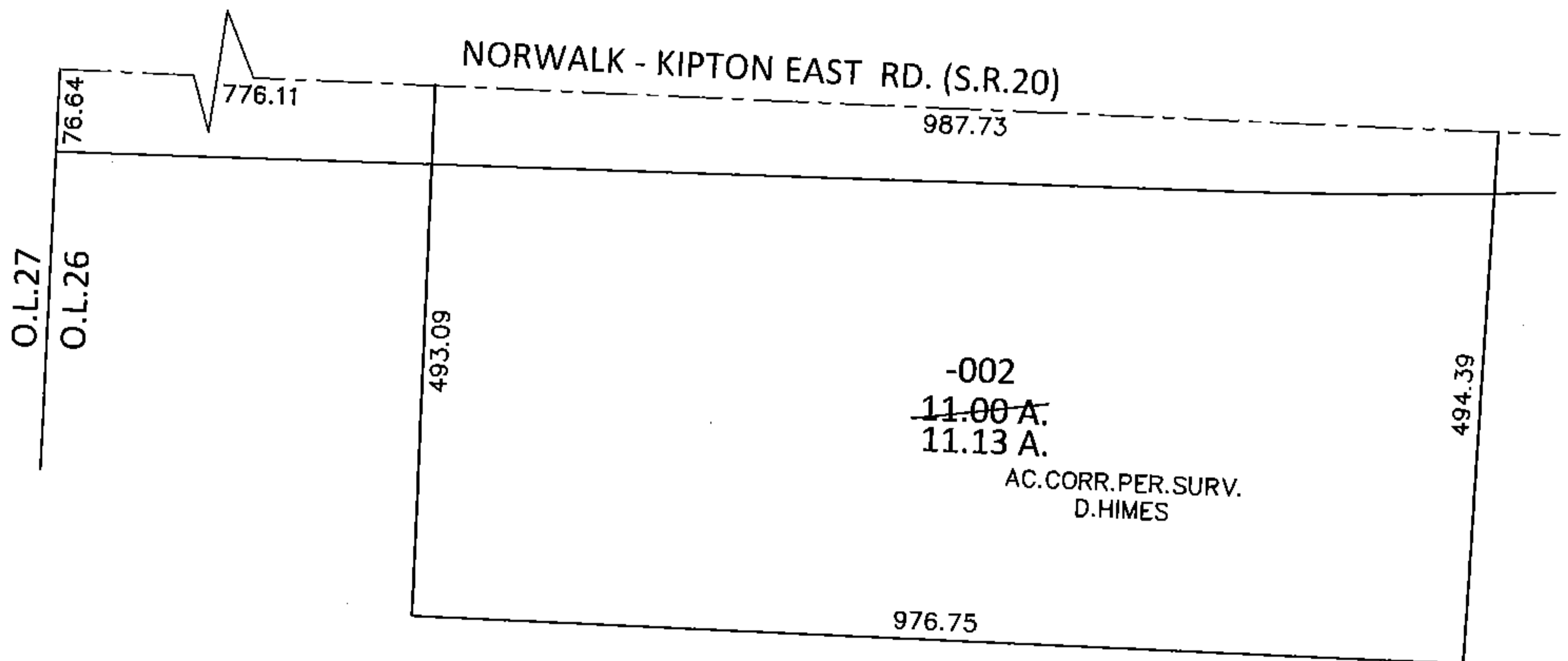
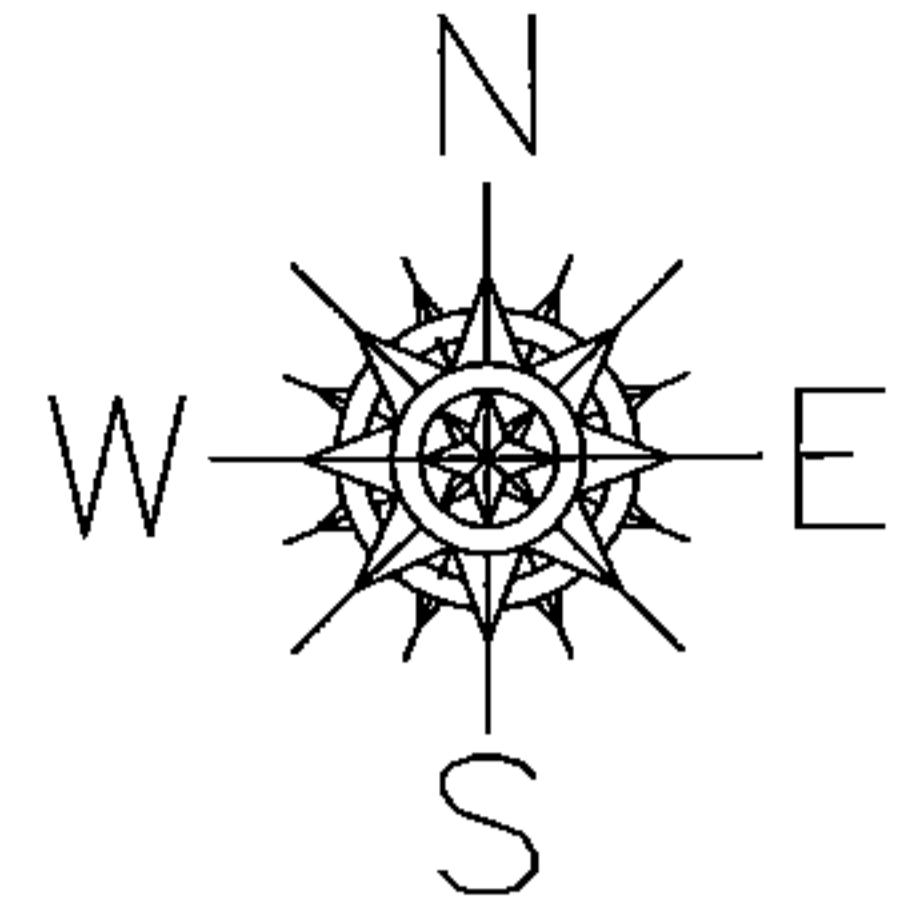


PARENT PARCEL: 14-00-026-000-002

CHILD PARCEL: _____

STARTING POINT: INTERSECTION OF SOUTH LINE OF S.R.20 AND WEST LINE OF O.L.26

12-02637-A



SPLITS/DEEDS PROCESSED

LORAIN COUNTY TAX MAP DEPARTMENT
226 MIDDLE AVE. ELYRIA, OHIO

SURVEYED BY: DONALD E. HIMES

CLOSURE: .01:10,000

MAP PAGE(S): 14-D

APPROVED BY: RRM DATE: 12-14-12

SCALE: 1"=200 PRIOR INST.: OR 209/59