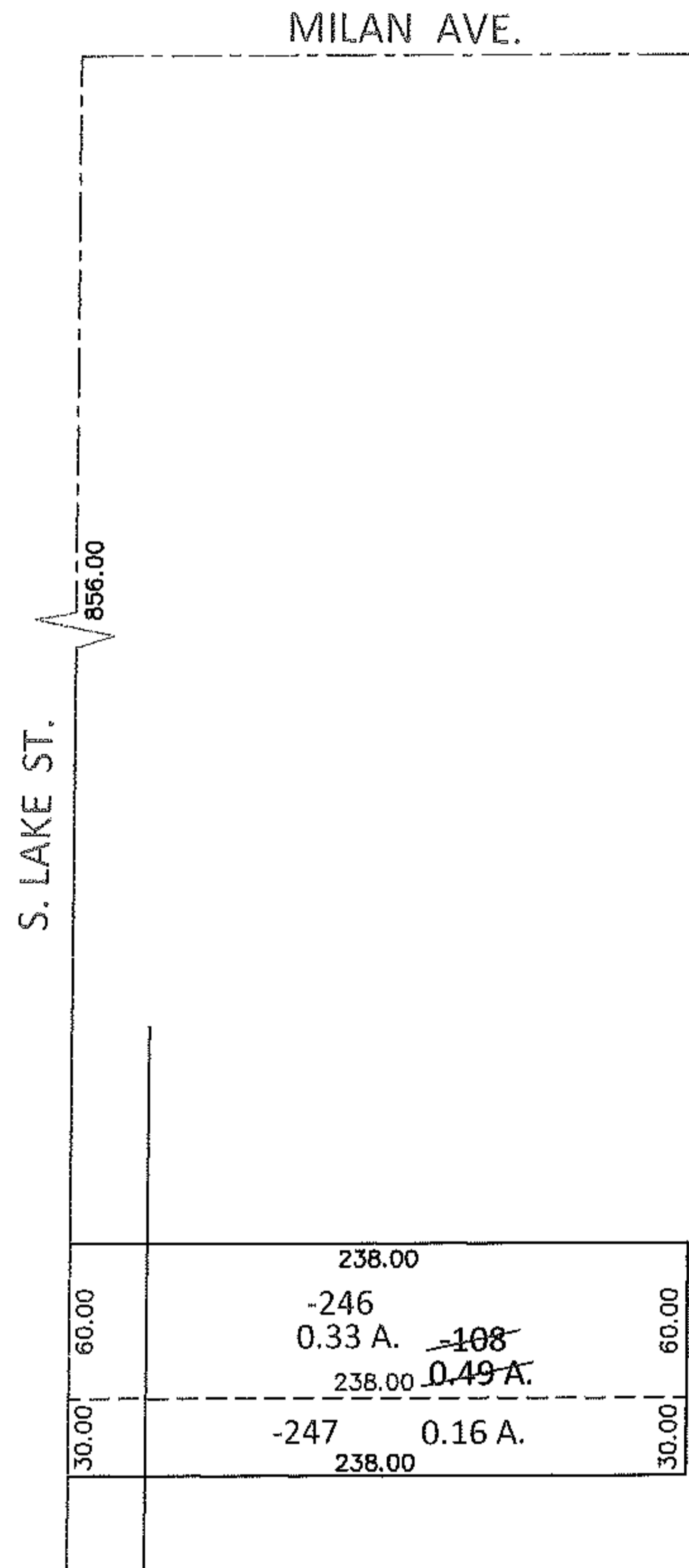
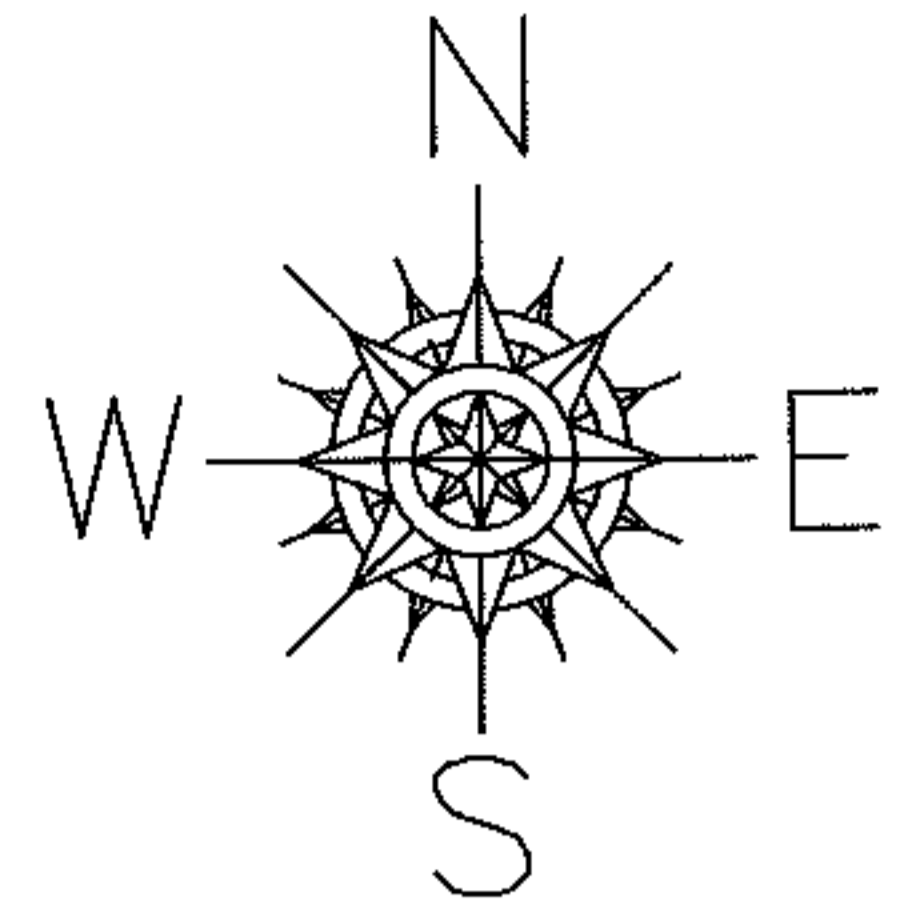


PARENT PARCEL: 05-00-017-000-108

CHILD PARCEL: 05-00-017-000-246, -247

STARTING POINT: INTERSECTION OF C/L OF S.LAKE ST. AND C/L OF MILAN AVE.

12-02621-U



UNCOMBINATION

PER PRIOR DEEDS

TO REMOVE UPDATE LEGAL FOR 2 LEGALS, 1 PARCEL NO.

SPLITS/DEEDS PROCESSED

LORAIN COUNTY TAX MAP DEPARTMENT
226 MIDDLE AVE. ELYRIA, OHIO

SURVEYED BY: J.W. WARDEN

CLOSURE: .00:10,000

MAP PAGE(S): 5-00-017-A

APPROVED BY: RRM DATE: 11-28-12

SCALE: 1"= 100 PRIOR INST.: 20120419232