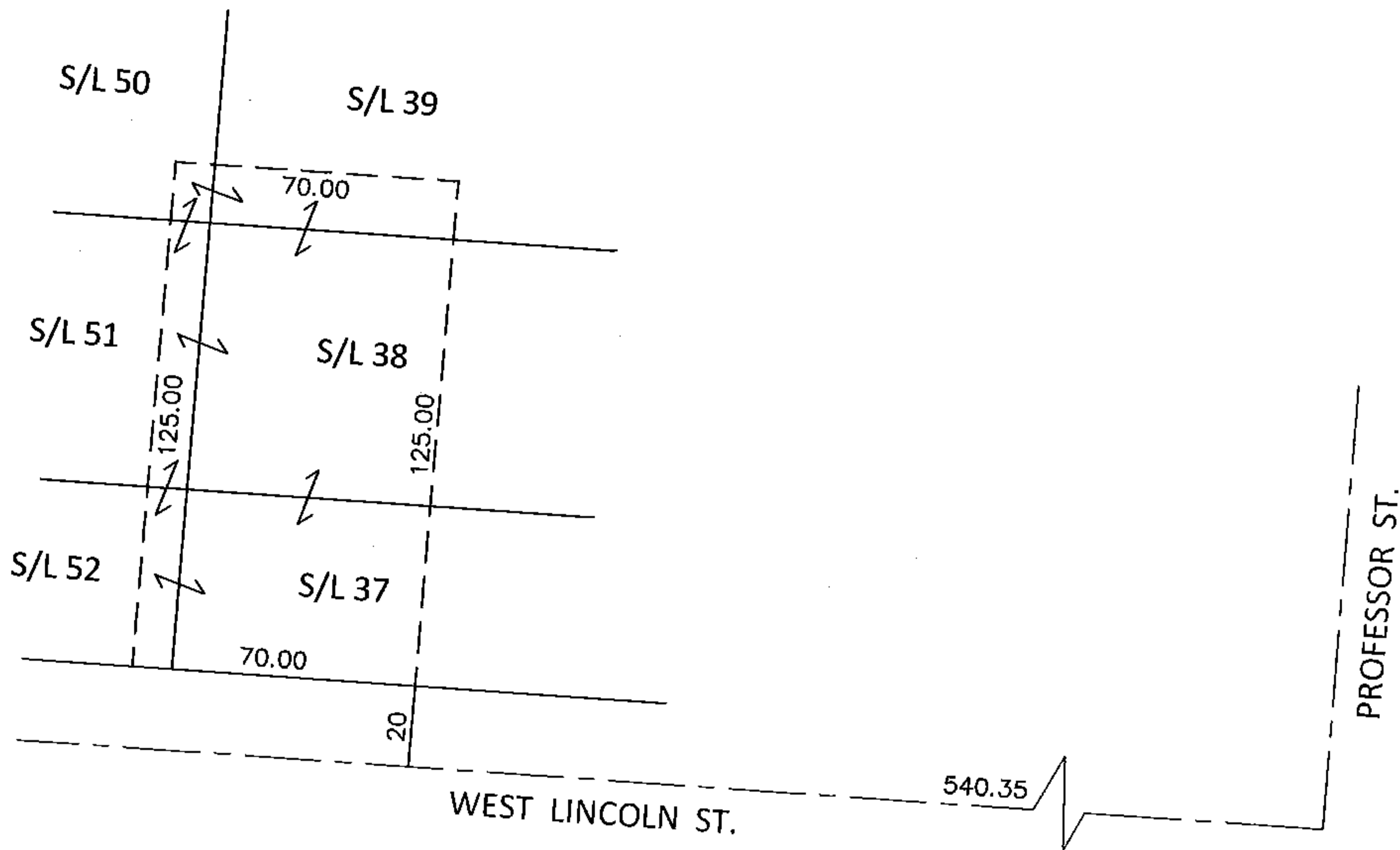
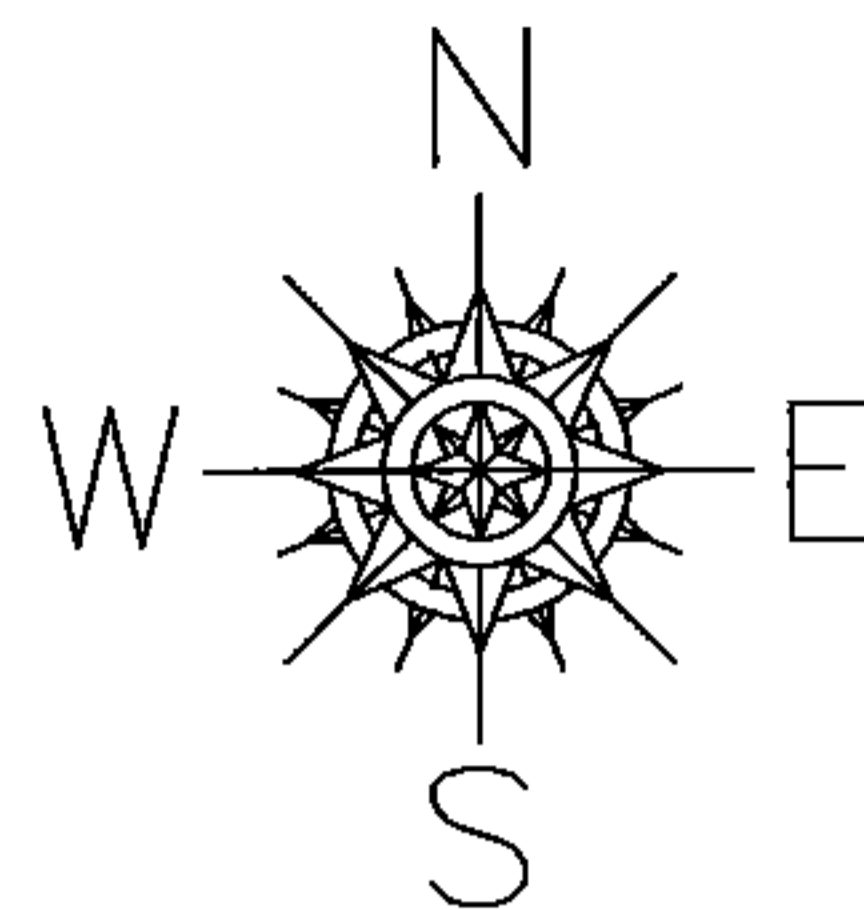


PARENT PARCEL: 09-00-095-102-031

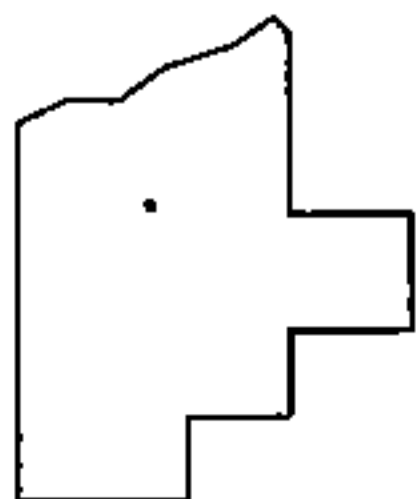
CHILD PARCEL:

STARTING POINT: INTERSECTION OF C/L OF WEST LINCOLN ST. AND C/L OF PROFESSOR ST.

12-02618-D



NO MAP CHANGES



SPLITS/DEEDS PROCESSED

LORAIN COUNTY TAX MAP DEPARTMENT
226 MIDDLE AVE. ELYRIA, OHIO

SURVEYED BY: EDWARD B. DUDLEY III
 CLOSURE: .00:10,000
 MAP PAGE(S): 9-00-095-B
 APPROVED BY: RRM DATE: 11-26-12
 SCALE: 1"= 50' PRIOR INST.: 20120419553