

PARENT PARCEL: 19-03-033-000-002, -003, & 19-03-032-000-003 & 19-03-055-000-001

CHILD PARCEL: XX-XX-XXX-XXX-XXX

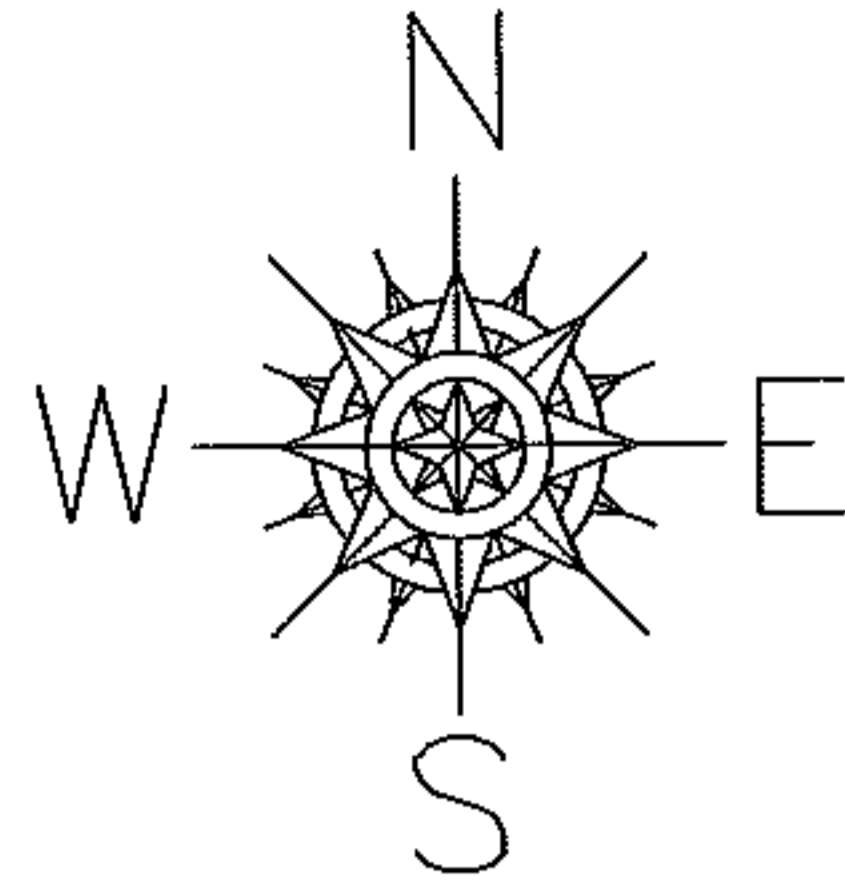
STARTING POINT: N.E. CORNER OF O.L. 33

12-02613-C

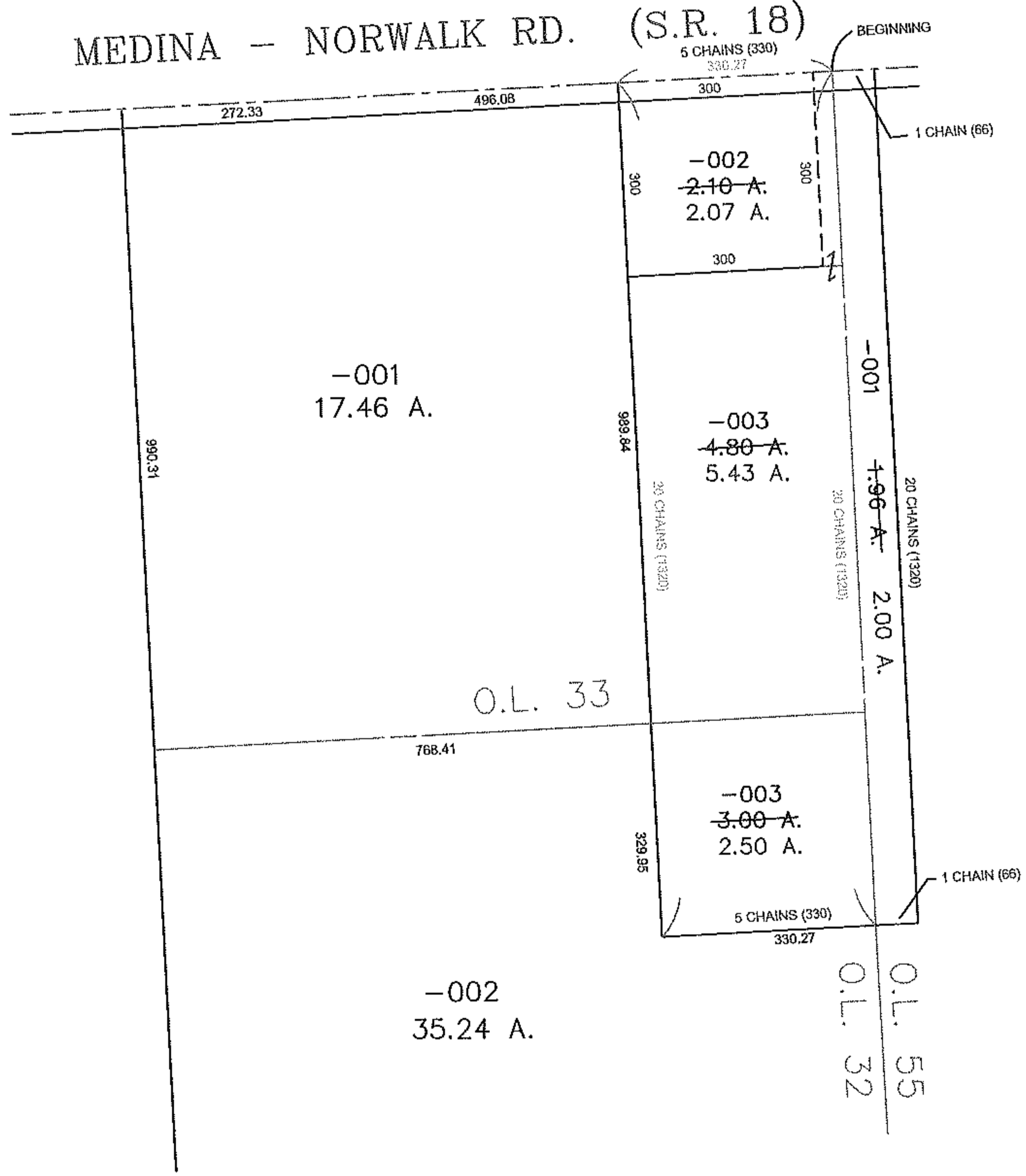
ACREAGE & MAP CORRECTION

PER DEEDS

OR 165/359 & OR 242/925



MEDINA - NORWALK RD. (S.R. 18)



PRIOR INSTRUMENT: OR 165/359

PRIOR INSTRUMENT: OR 242/925

SPLITS/DEEDS PROCESSED

LORAIN COUNTY TAX MAP DEPARTMENT  
226 MIDDLE AVE. ELYRIA, OHIO

SURVEYED BY: PER DEEDS  
CLOSURE: NA  
MAP PAGE(S): 19-G & H  
APPROVED BY: TJS DATE: 11/21/12  
SCALE: 1" = 300'