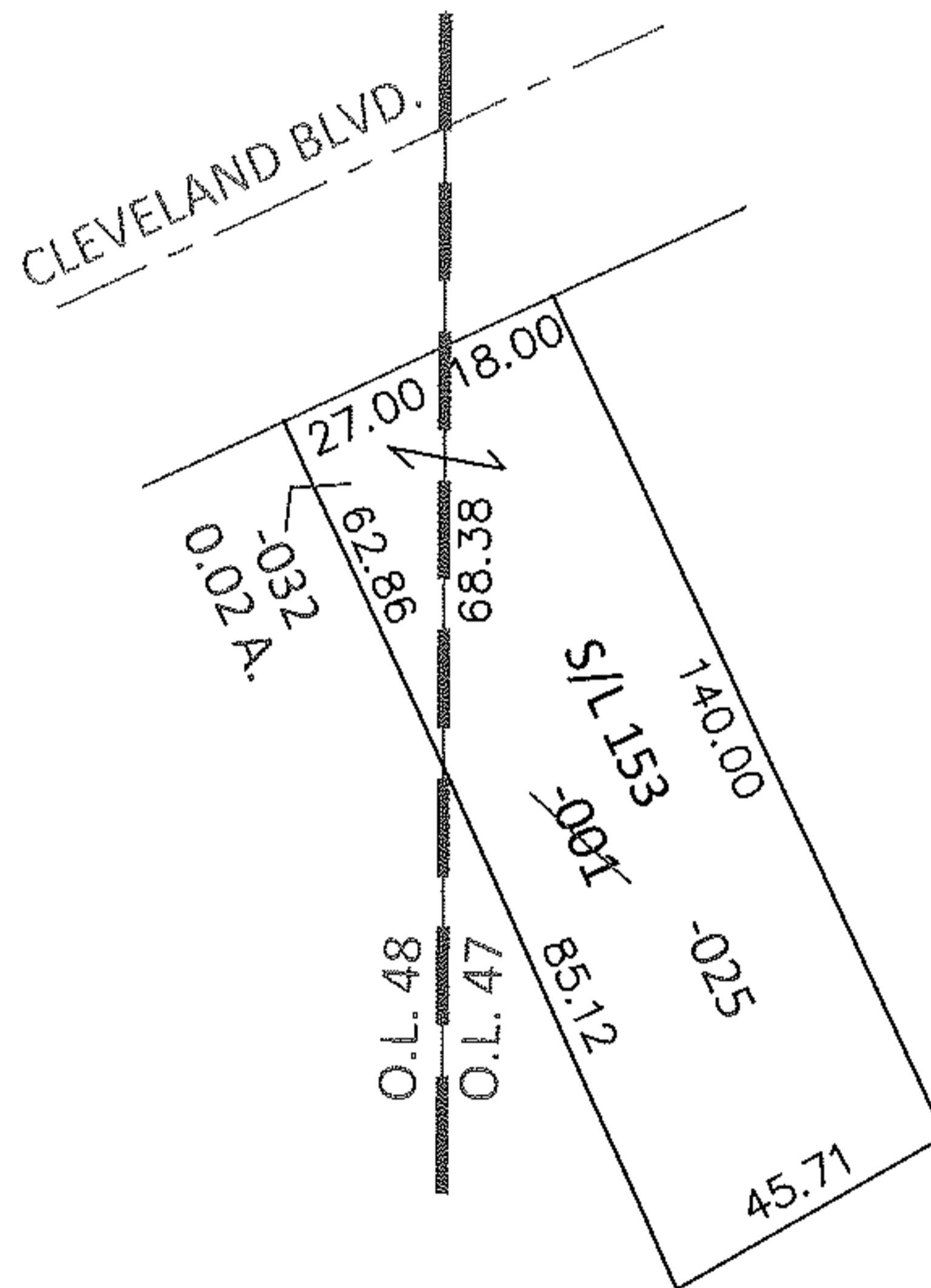
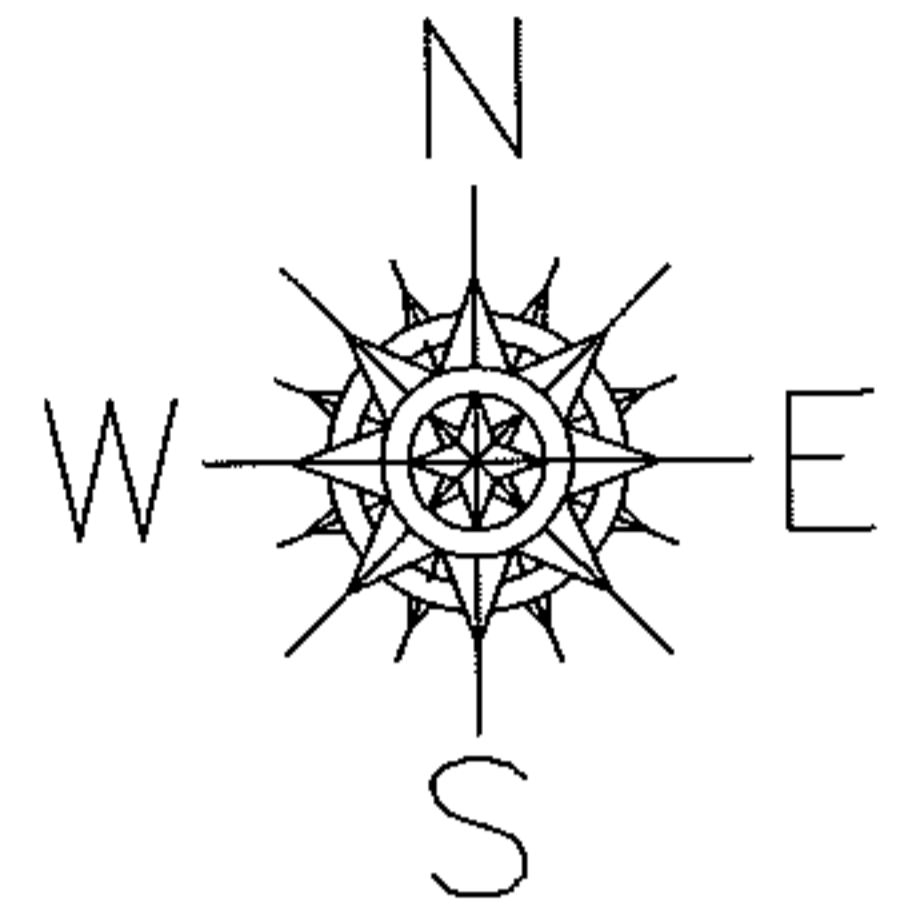


PARENT PARCEL: 03-00-047-104-001

CHILD PARCEL: 03-00-047-104-025, 03-00-048-105-032

12-02608-U

STARTING POINT: INTERSECTION OF EAST LINE OF O.L.48 AND SOUTH LINE OF CLEVELAND BLVD.



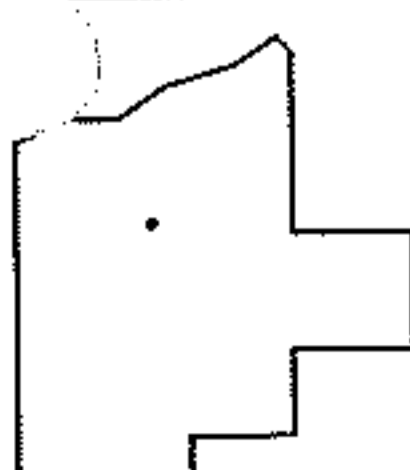
UNCOMBINATION

~~03-00-047-104-001~~
~~45 X 140~~

03-00-047-104-025
18 X 140 IRR

03-00-048-105-032
0.02 A.

PER PRIOR DEEDS
TO REMOVE UPDATE LEGAL FOR 2 LEGALS, 1 PARCEL NO.



SPLITS/DEEDS PROCESSED

LORAIN COUNTY TAX MAP DEPARTMENT
226 MIDDLE AVE. ELYRIA, OHIO

SURVEYED BY: N/A

CLOSURE: N/A

MAP PAGE(S): 3-00-047-A, 3-00-048

APPROVED BY: RRM DATE: 11-1-12

SCALE: 1" = 50' PRIOR INST.: 20070195104