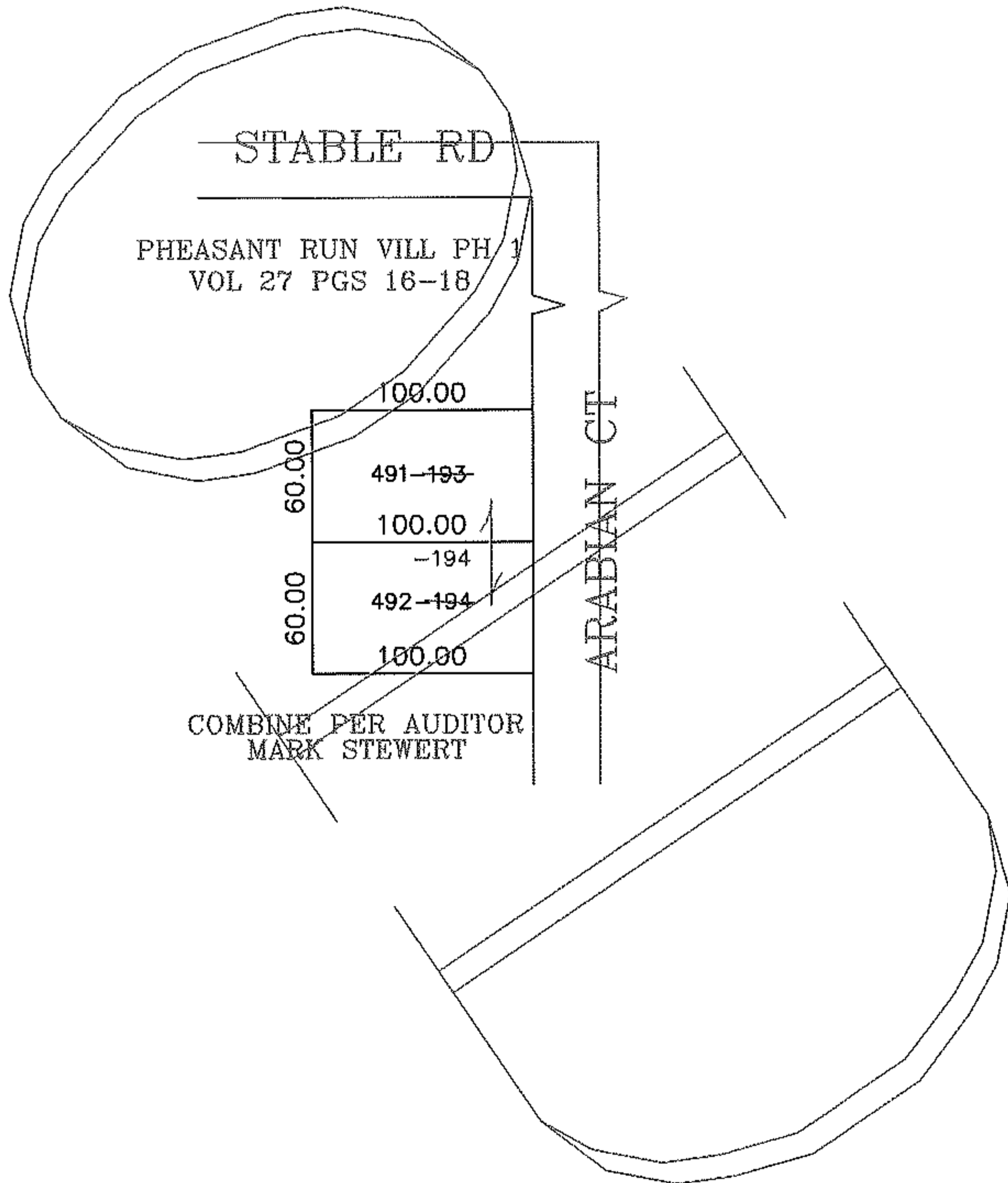
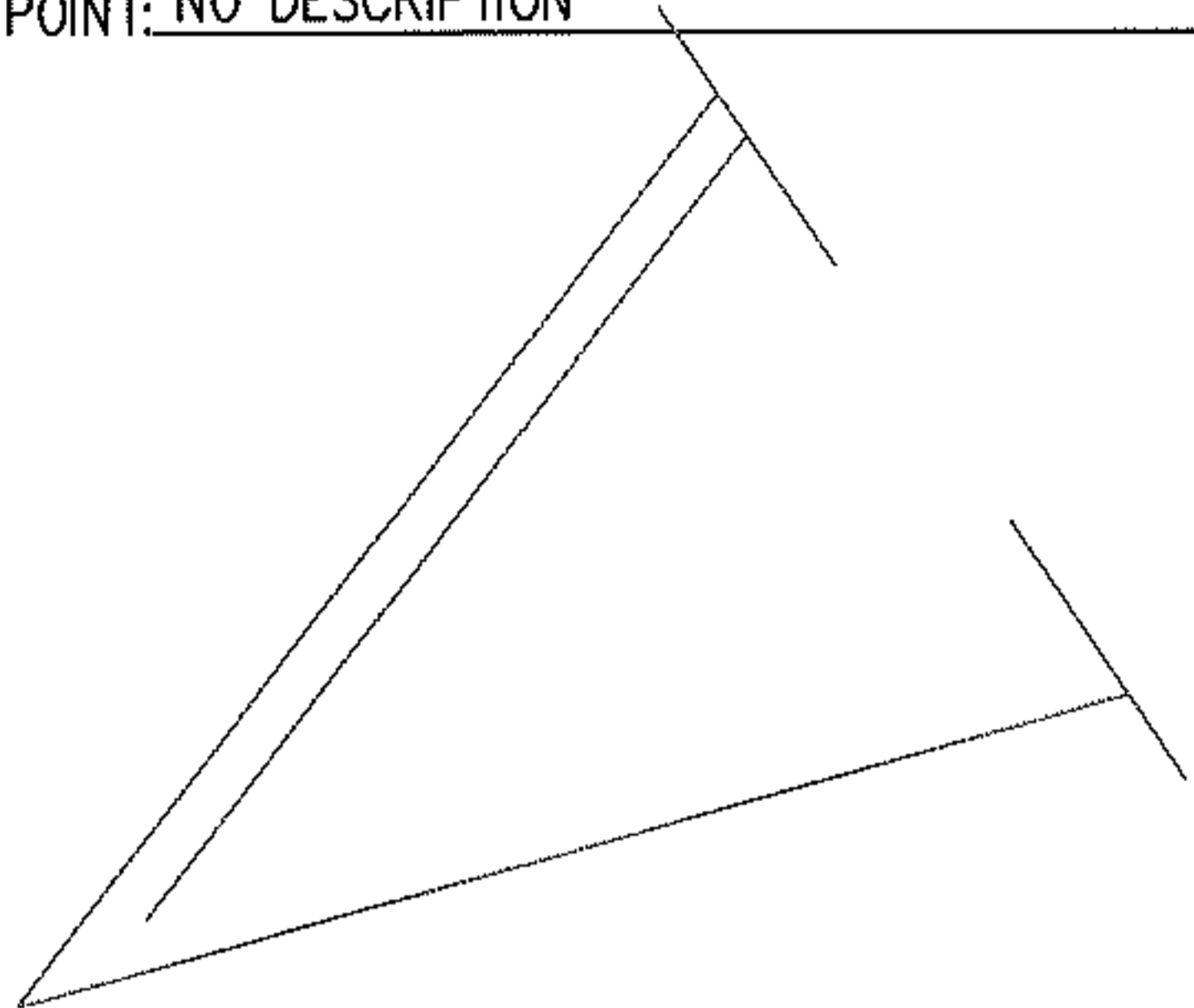
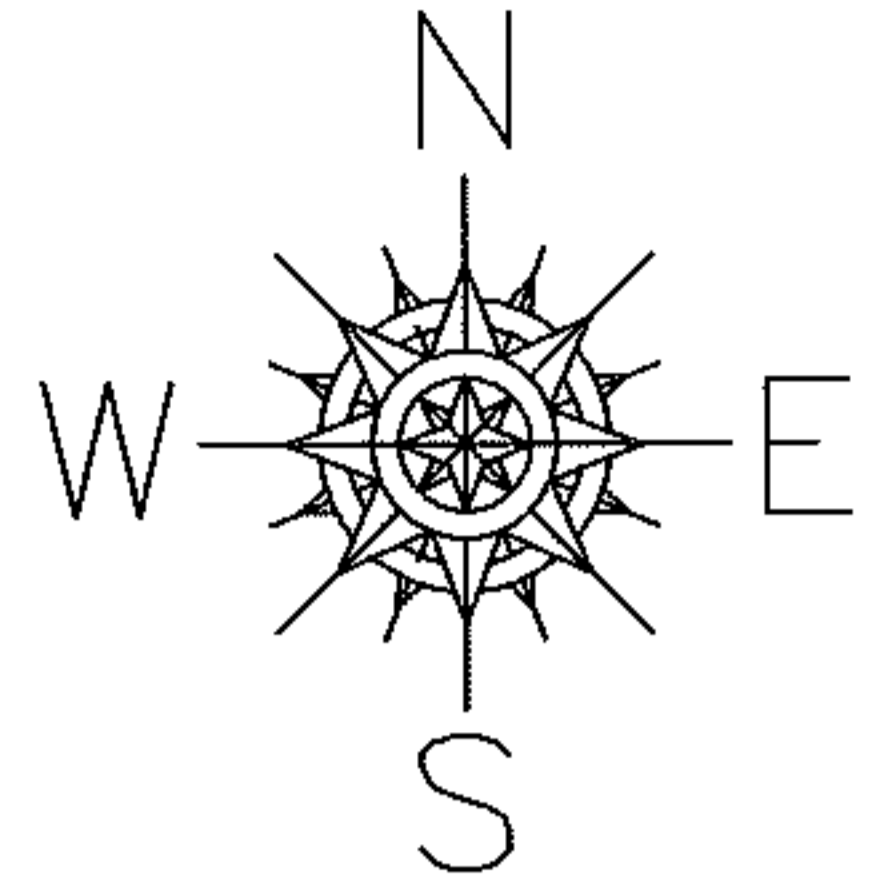


PARENT PARCEL: 15-00-098-108-193, -194

CHILD PARCEL: 15-00-098-108-271

STARTING POINT: NO DESCRIPTION

08-02604



COMBINE PER AUDITOR
MARK STEWERT

SPLITS/DEEDS PROCESSED

LORAIN COUNTY TAX MAP DEPARTMENT
226 MIDDLE AVE. ELYRIA, OHIO

SURVEYED BY: COMB PER MARK STEWERT

CLOSURE: N/A

MAP PAGE(S): 15-00-098-A

APPROVED BY: JAH DATE: 8-27-08

SCALE: 1" = 100 PRIOR INSTRUMENT: PLT VL 27/16