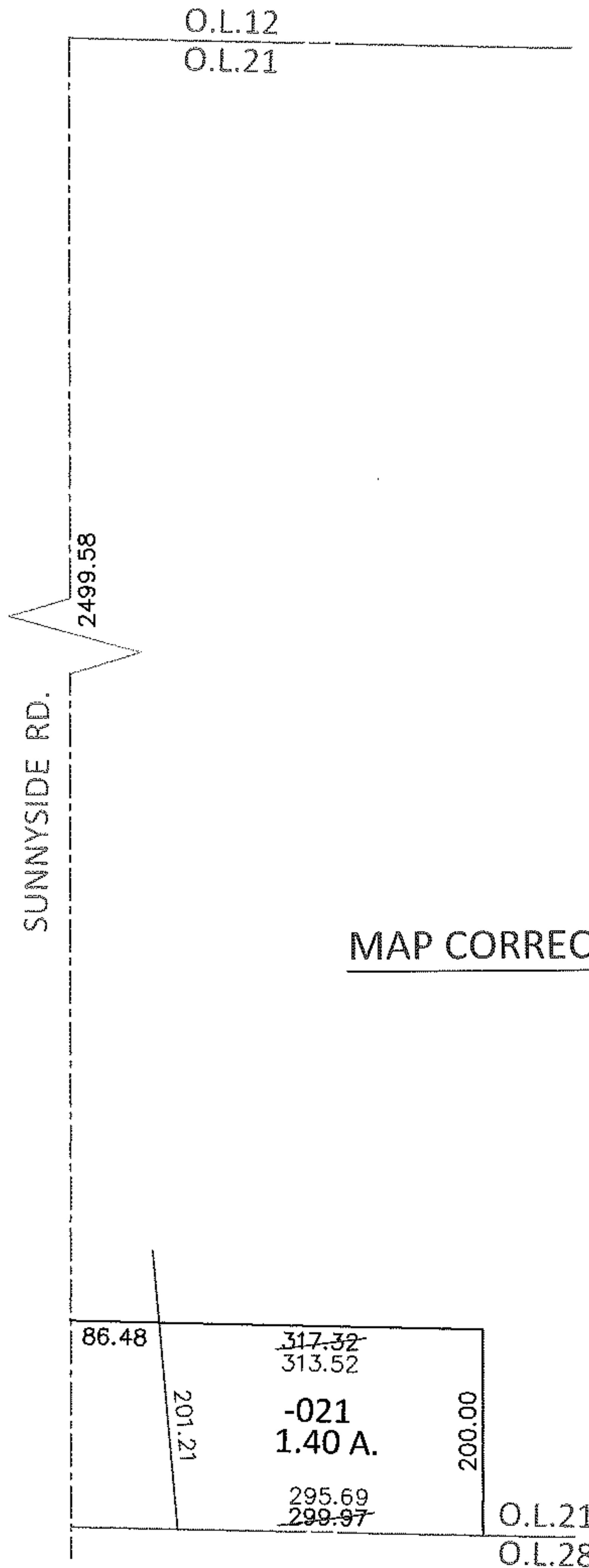
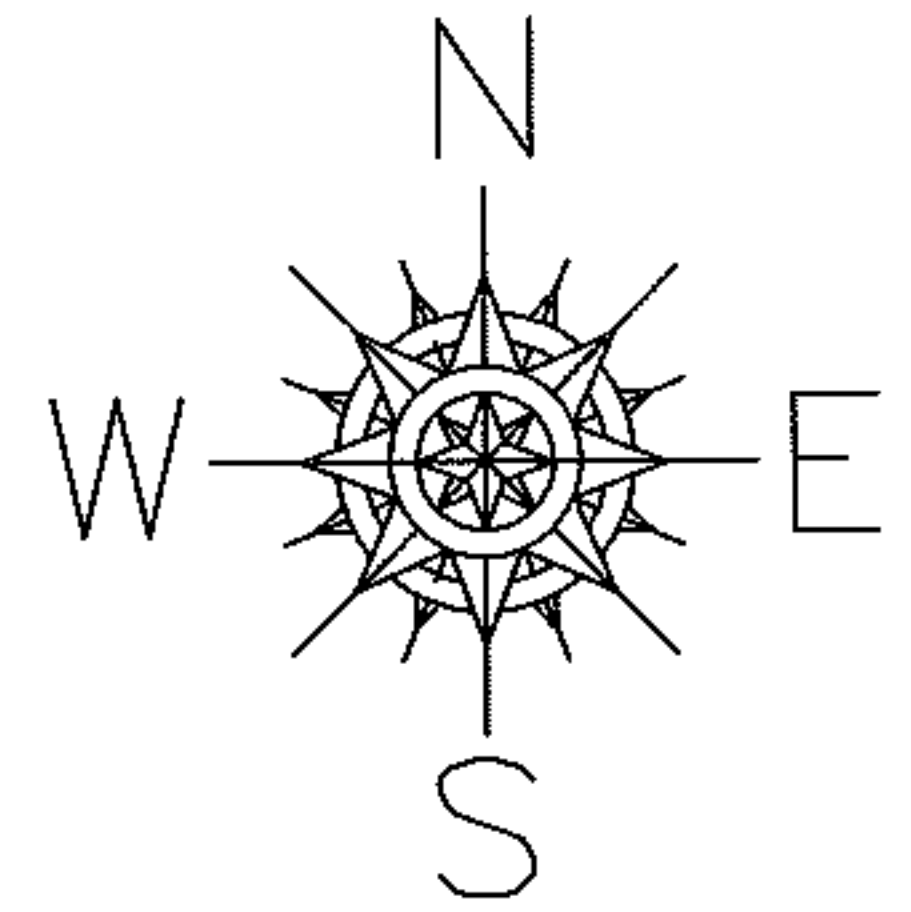


PARENT PARCEL: 01-00-021-000-021

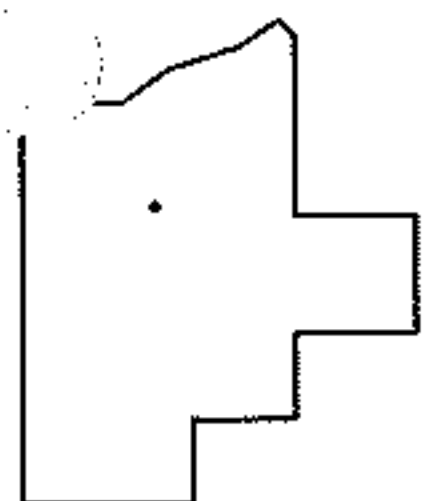
CHILD PARCEL: _____

STARTING POINT: INTERSECTION OF C/L OF SUNNYSIDE RD. AND NORTH LINE OF O.L.21

12-02603-C



MAP CORRECTION ONLY



SPLITS/DEEDS PROCESSED

LORAIN COUNTY TAX MAP DEPARTMENT
226 MIDDLE AVE. ELYRIA, OHIO

SURVEYED BY: THOMAS A. SIMON

CLOSURE: .00:10,000

MAP PAGE(S): 1-00-021-A

APPROVED BY: RRM DATE: 10-29-12

SCALE: 1"= 200 PRIOR INST.: 20090297135