

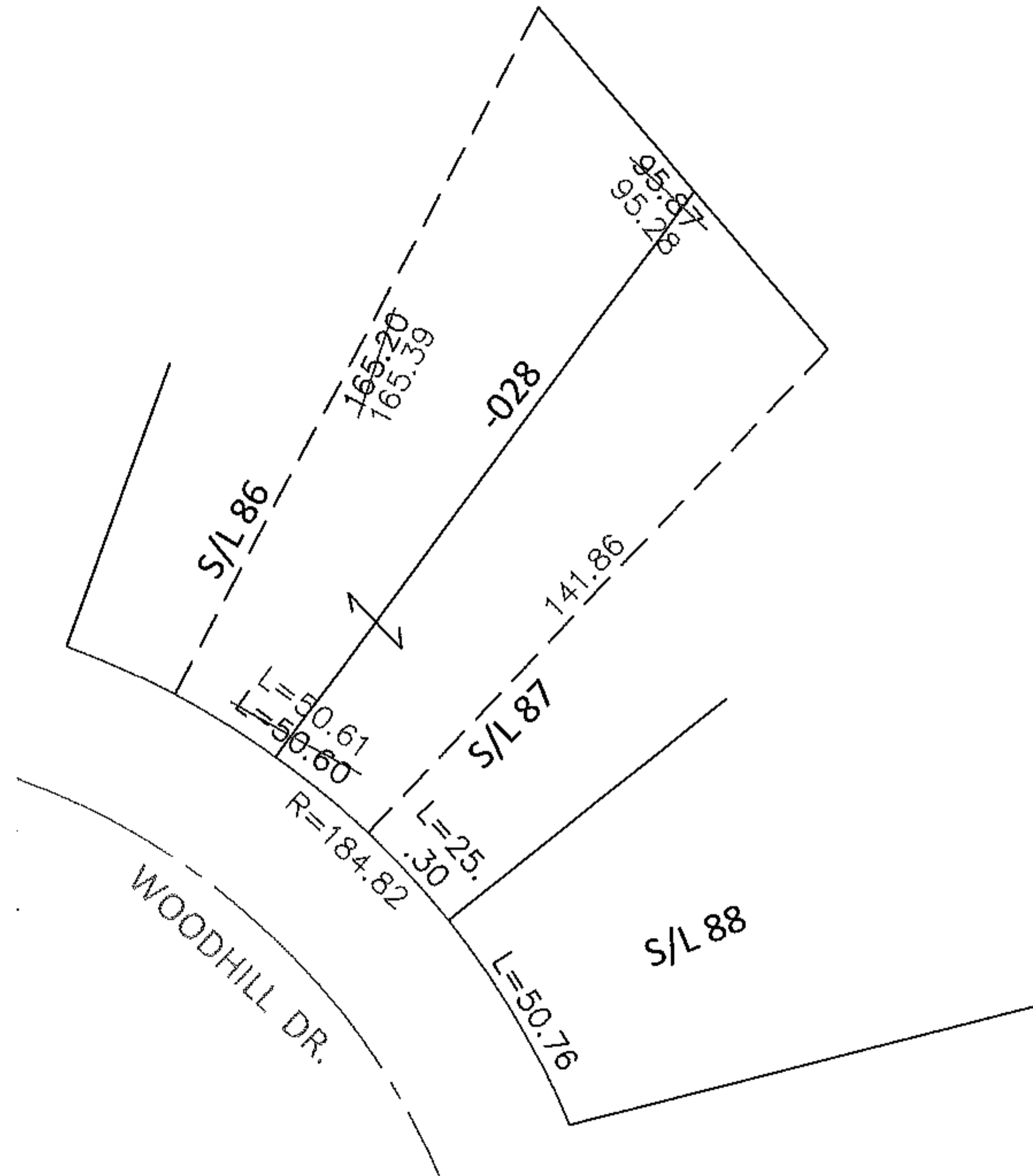
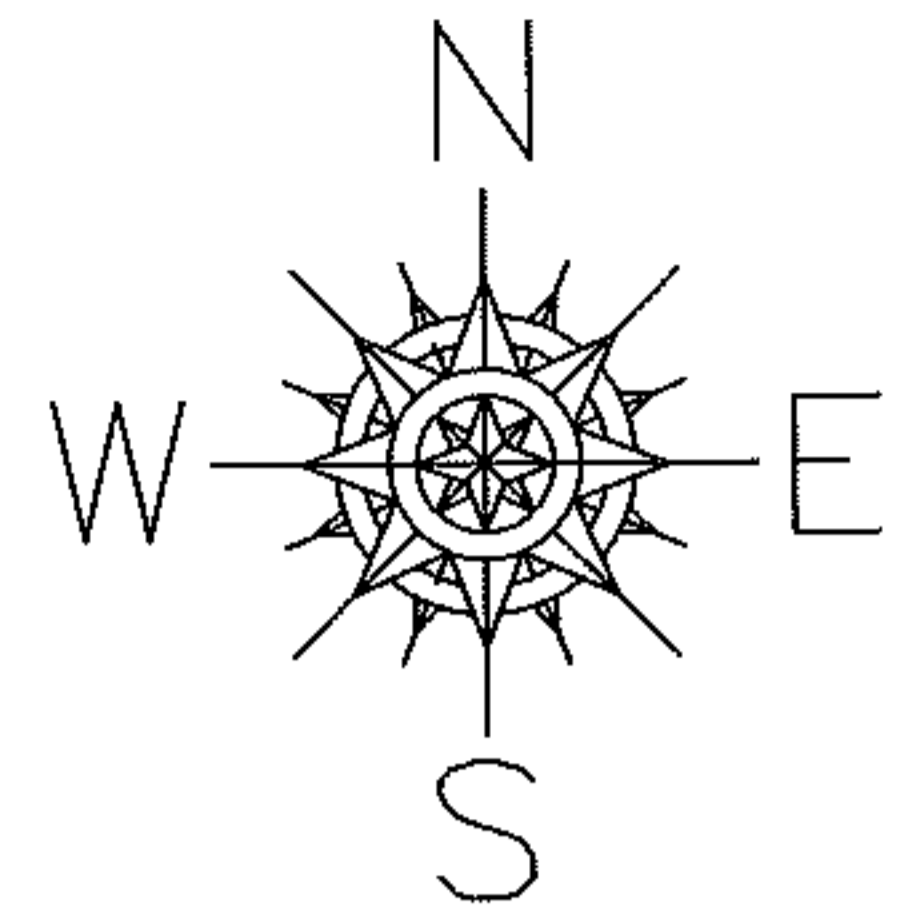
RASTER

PARENT PARCEL: 06-24-045-103-028

12-02602-D

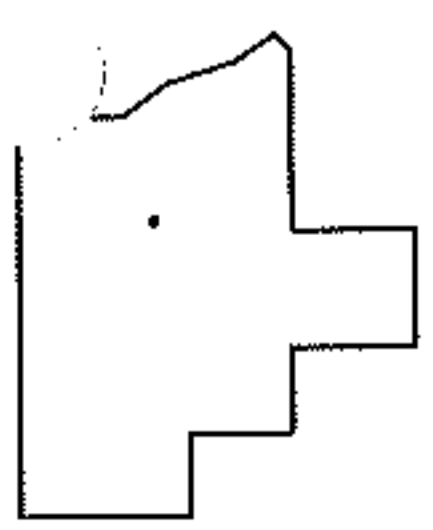
CHILD PARCEL:

STARTING POINT: SOUTHEAST CORNER OF S/L 88 IN CRESTHAVEN SUB. NO.3(VOL.22 PG.55)



FRONTAGE AND DEPTH CORRECTION

06-24-045-103-028
50.61 X 165.39
~~50.60 X 160~~
PER SURV. S. BOLAND



SPLITS/DEEDS PROCESSED

LORAIN COUNTY TAX MAP DEPARTMENT
226 MIDDLE AVE. ELYRIA, OHIO

SURVEYED BY: SEAN A. BOLAND

CLOSURE: .00:10,000

MAP PAGE(S): 6-39

APPROVED BY: RRM DATE: 10-22-12

SCALE: 1"= 50' PRIOR INST.: 20120406412