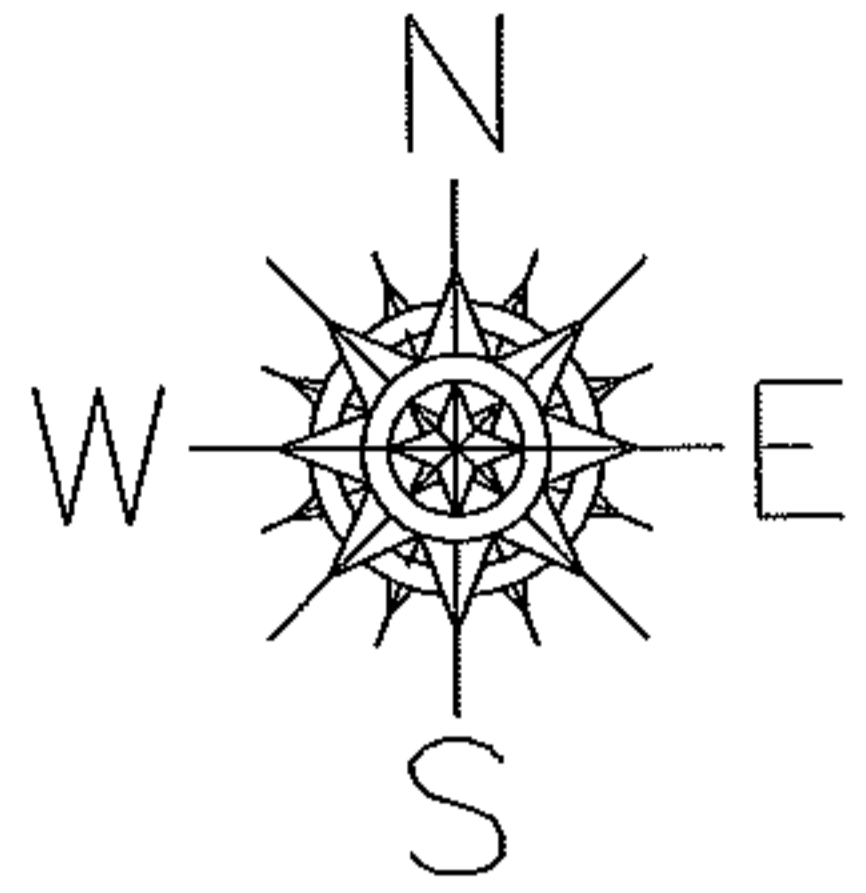


RASER

PARENT PARCEL: CERT OF CORR CAMDEN RIDGE SUB NO 2  
CHILD PARCEL:  
STARTING POINT:

12-02596-C

# CERT. OF CORR.



## ACREAGE CORRECTION

BLOCK "H"  
02-02-010-000-148

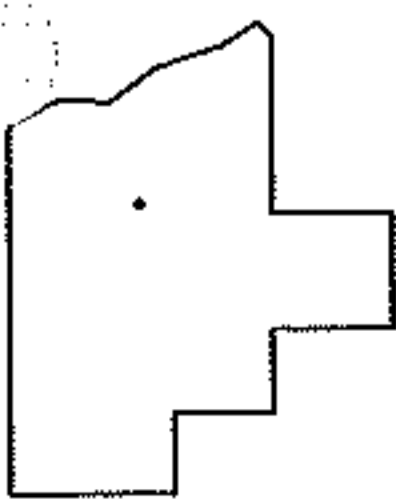
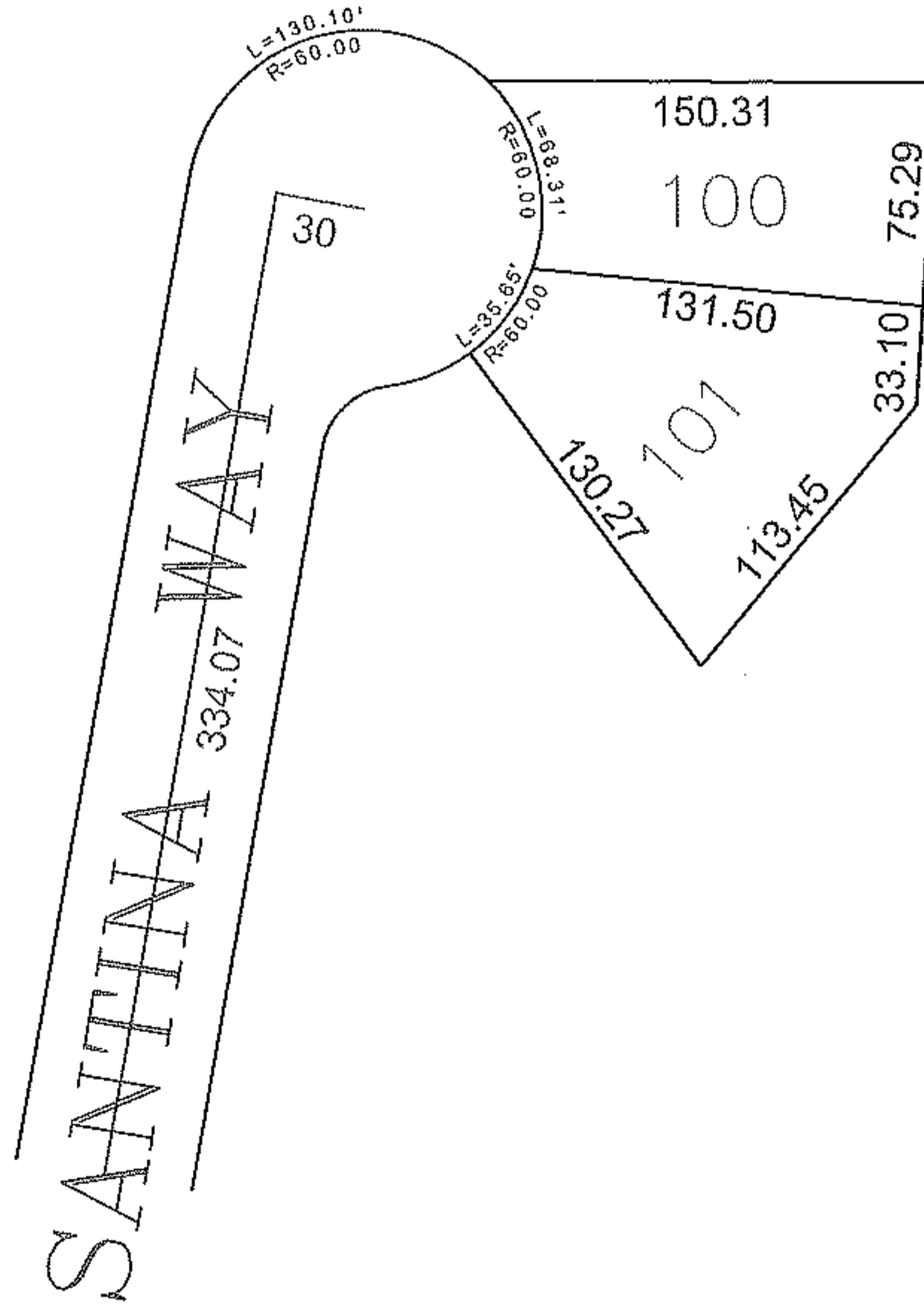
~~9.49~~ A.

9.44 A.

CORR. PER SURV.

EHTESHAM M. SUHAIL

BLOCK "H"



### SPLITS/DEEDS PROCESSED

LORAIN COUNTY TAX MAP DEPARTMENT  
226 MIDDLE AVE. ELYRIA, OHIO

SURVEYED BY: EHTESHAM M. SUHAIL  
CLOSURE: 1:10,000  
MAP PAGE(S): 02-02-010-A  
APPROVED BY: TJS DATE: 10/9/12  
SCALE: 1" = 100' PRIOR INSTRUMENT: 71/47-48