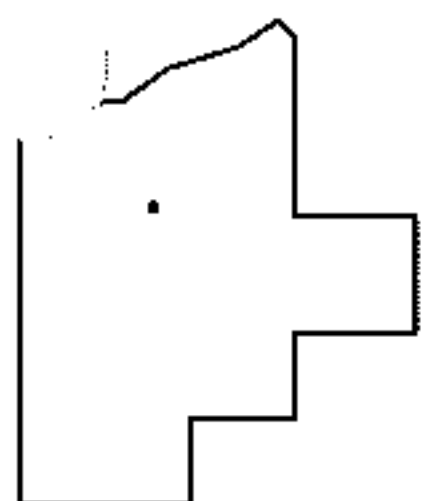
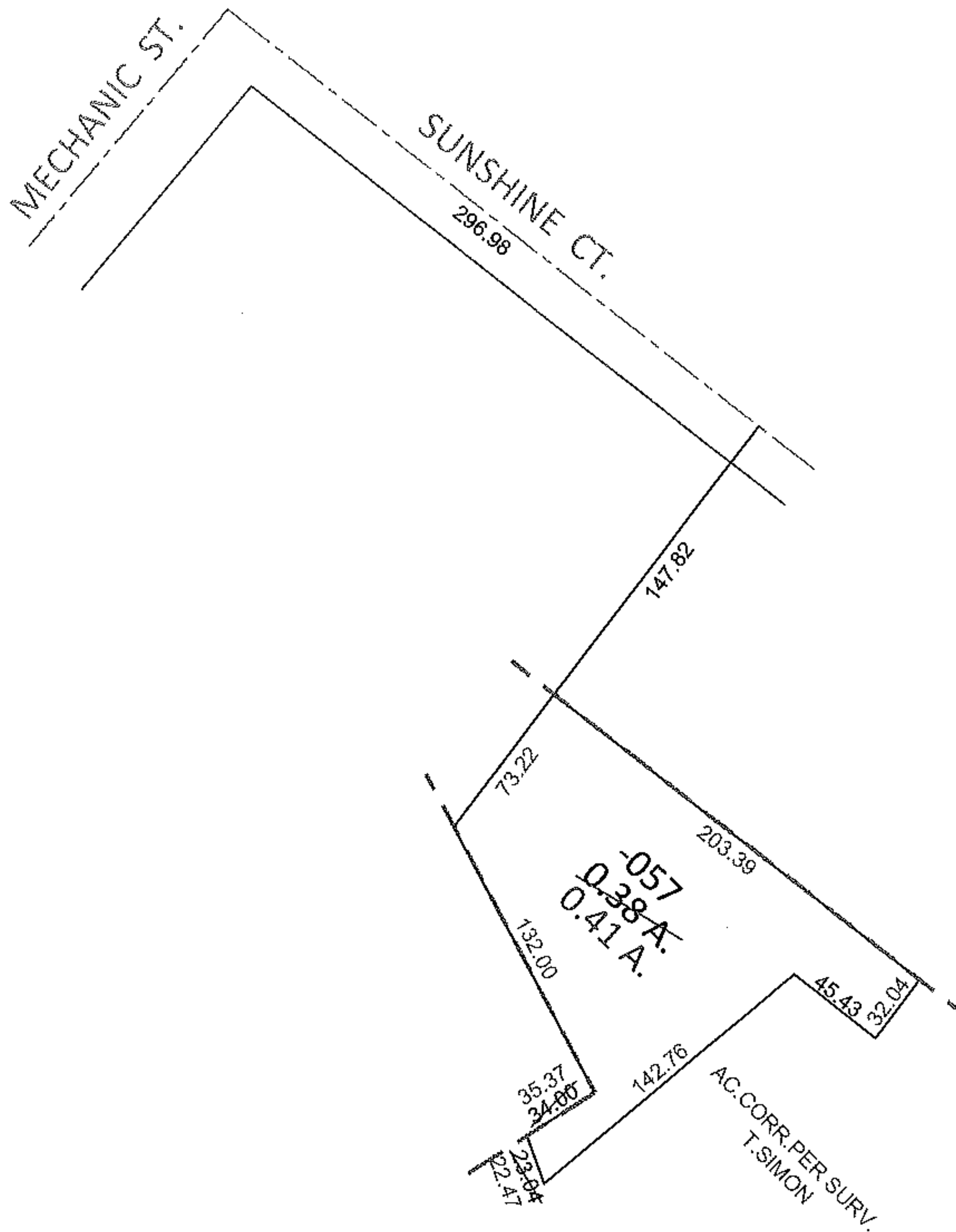
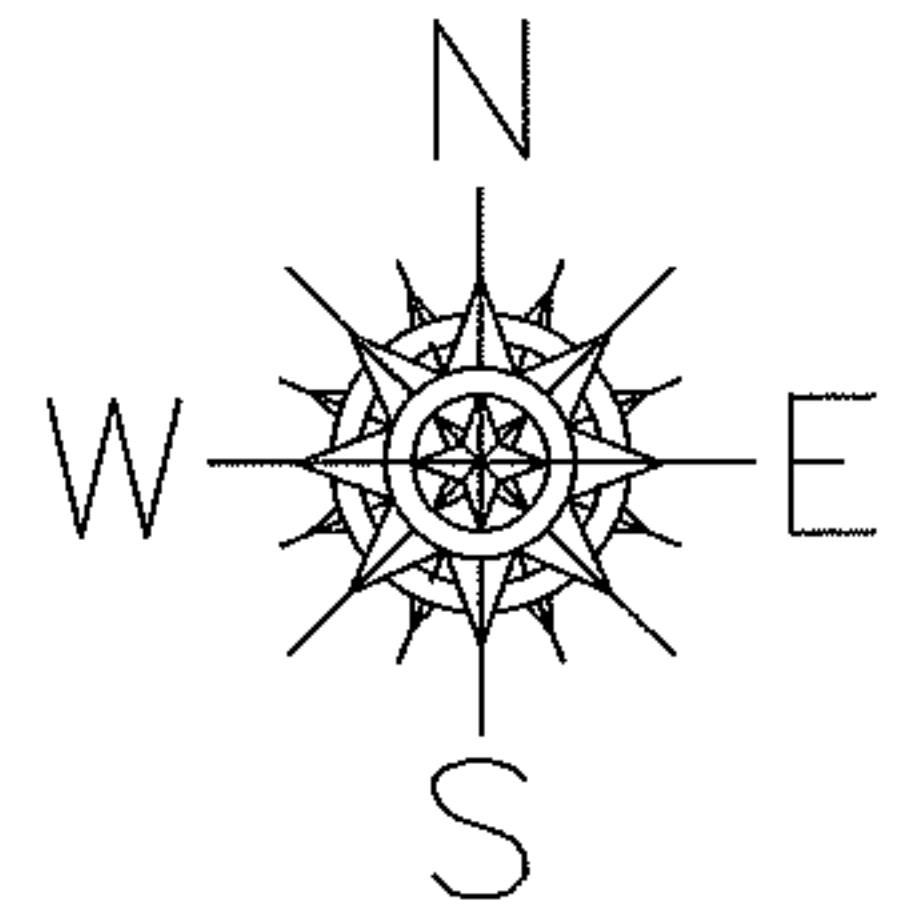


PARENT PARCEL: 16-00-002-106-057

CHILD PARCEL: \_\_\_\_\_

STARTING POINT: INTERSECTION OF C/L OF MECHANIC ST. AND C/L OF SUNSHINE CT.

12-02582-D



**SPLITS/DEEDS PROCESSED**

LORAIN COUNTY TAX MAP DEPARTMENT  
226 MIDDLE AVE. ELYRIA, OHIO

SURVEYED BY: THOMAS A. SIMON

CLOSURE: .01:10,000

MAP PAGE(S): 16-00-001-D

APPROVED BY: RRM DATE: 9-18-12

SCALE: 1"= 100 PRIOR INST.: 20030885725