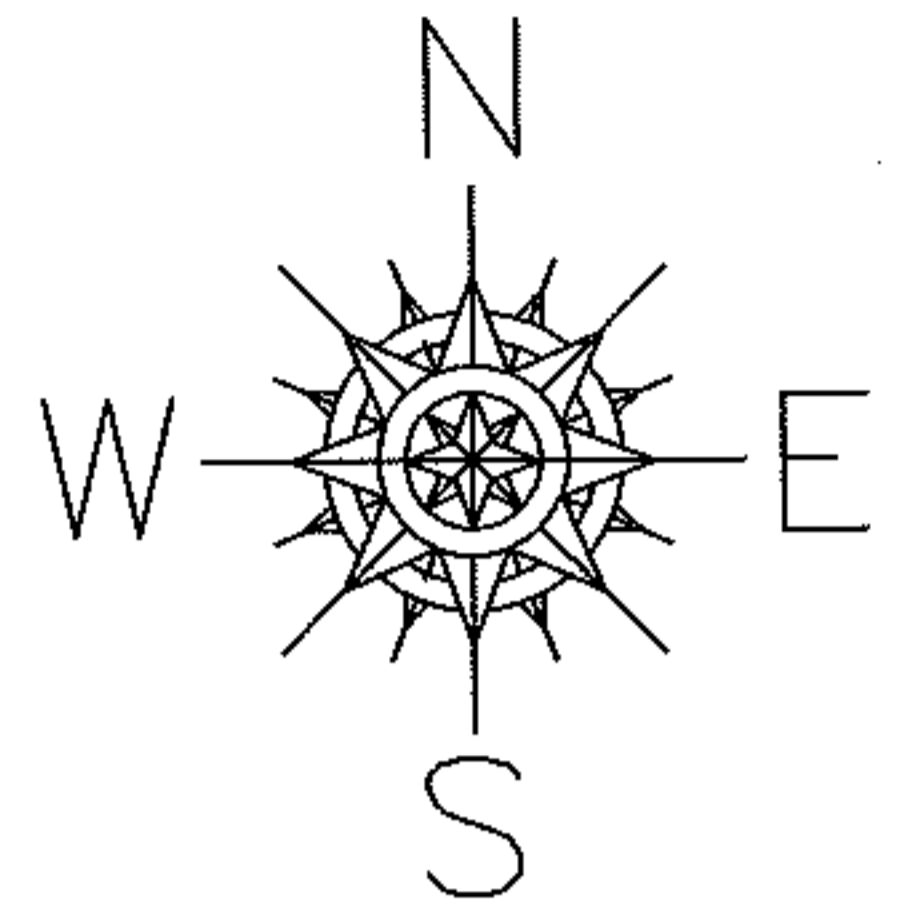
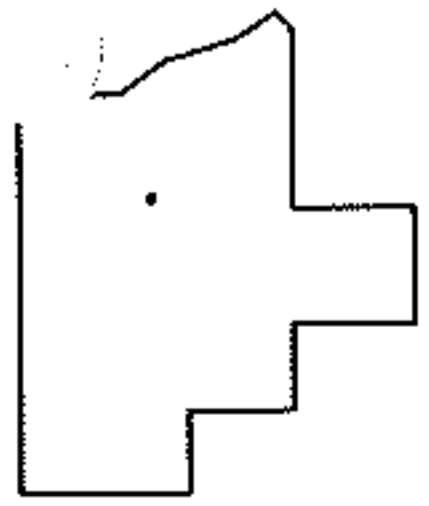
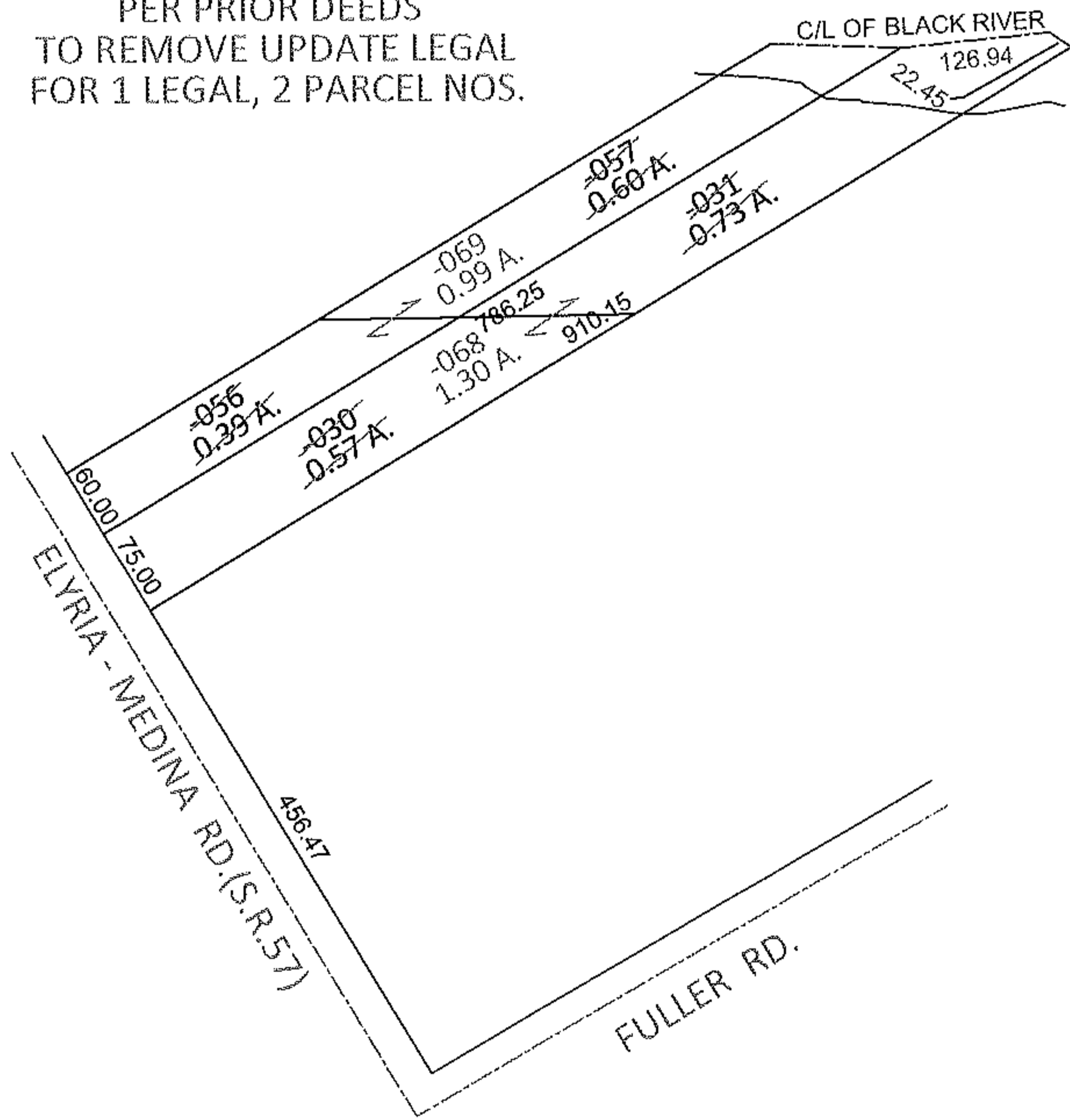


PARENT PARCEL: 10-00-004-129-030, 031, -056, -057
CHILD PARCEL: 10-00-004-129-068, -069
STARTING POINT: INTERSECTION OF EAST LINE OF S.R.57 AND NORTH LINE OF FULLER RD.

12-02581-C



COMBINATION
PER PRIOR DEEDS
TO REMOVE UPDATE LEGAL
FOR 1 LEGAL, 2 PARCEL NOS.



SPLITS/DEEDS PROCESSED
LORAIN COUNTY TAX MAP DEPARTMENT
226 MIDDLE AVE. ELYRIA, OHIO

SURVEYED BY: RAY E. HOLLIS
CLOSURE: .01:10,000
MAP PAGE(S): 10-00-004-C
APPROVED BY: RRM DATE: 9-18-12
SCALE: 1" = 200 PRIOR INST.: 20050068085