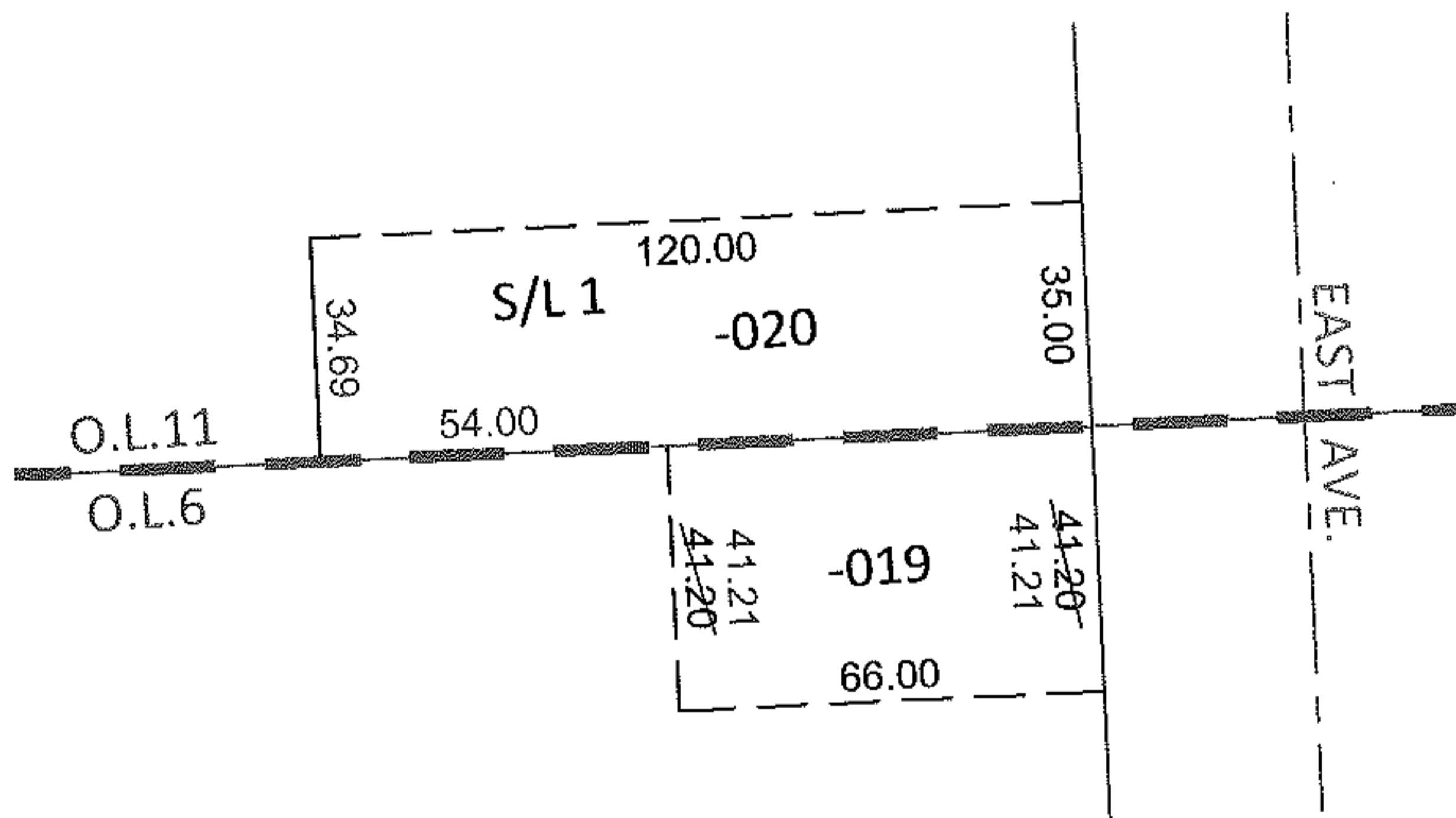
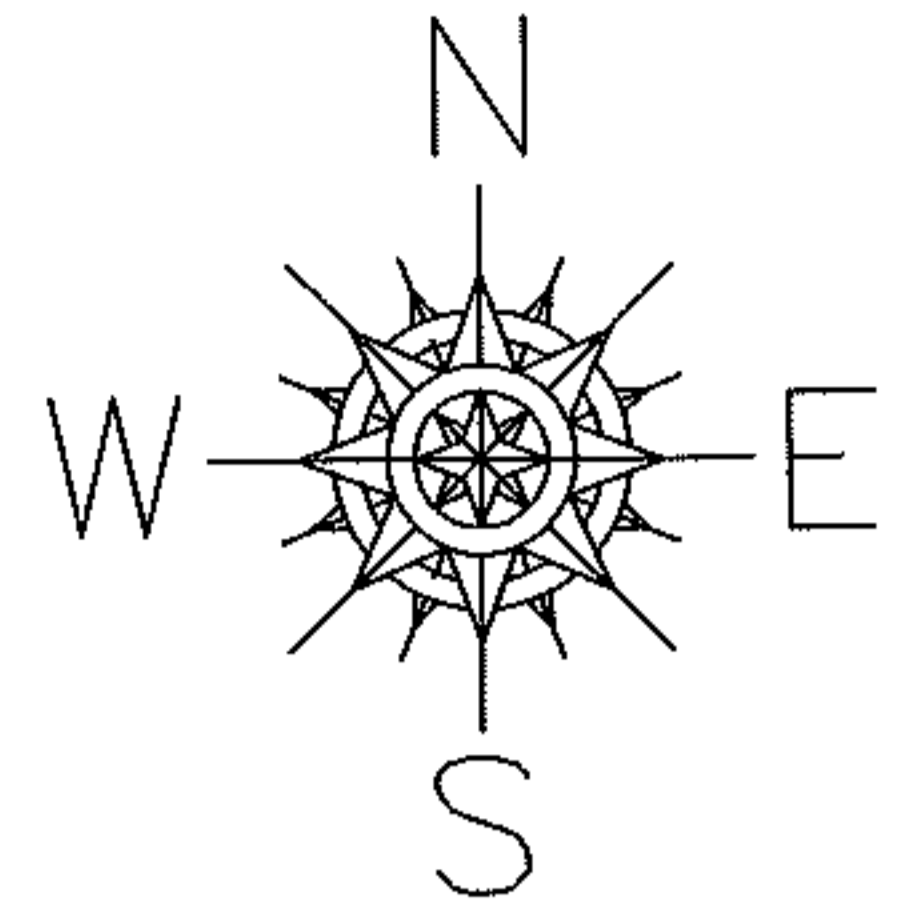


PARENT PARCEL: 06-26-006-101-019, 06-26-011-102-020

12-02580-D

CHILD PARCEL:

STARTING POINT: SOUTHEAST CORNER OF S/L 1 IN CHAS. E. TUCKER TR. ALLOT.(VOL.6 PG.39)



FRONTAGE CORRECTION

06-26-006-101-019

41.21

~~41.20~~ X 66

PER SURV. J.YURKSCHATT

SPLITS/DEEDS PROCESSED

LORAIN COUNTY TAX MAP DEPARTMENT
226 MIDDLE AVE. ELYRIA, OHIO

SURVEYED BY: JAMES P. YURKSCHATT

CLOSURE: .00:10,000

MAP PAGE(S): 6-138

APPROVED BY: RRM DATE: 9-18-12

SCALE: 1"= 50' PRIOR INST.: 20120416871