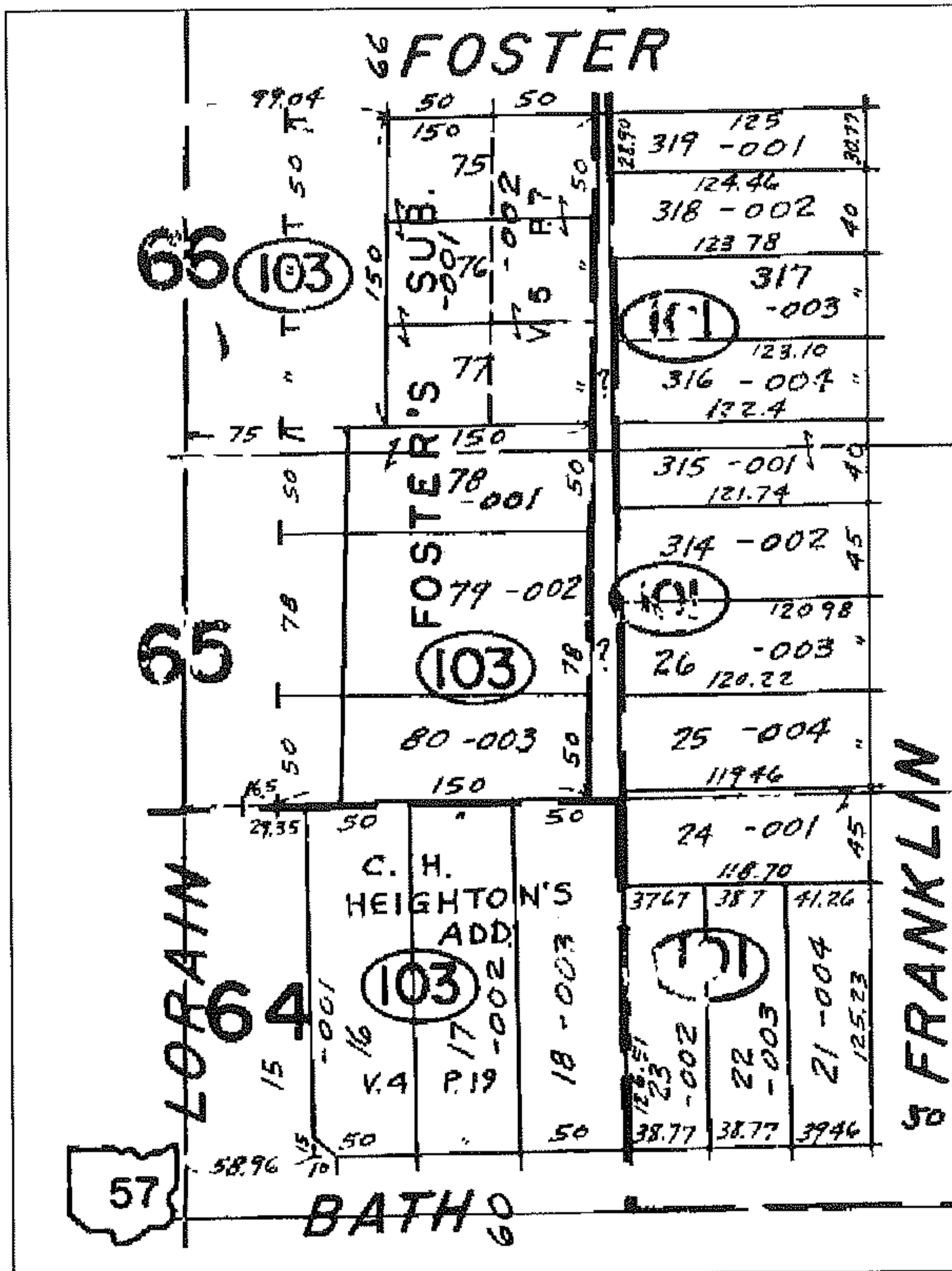
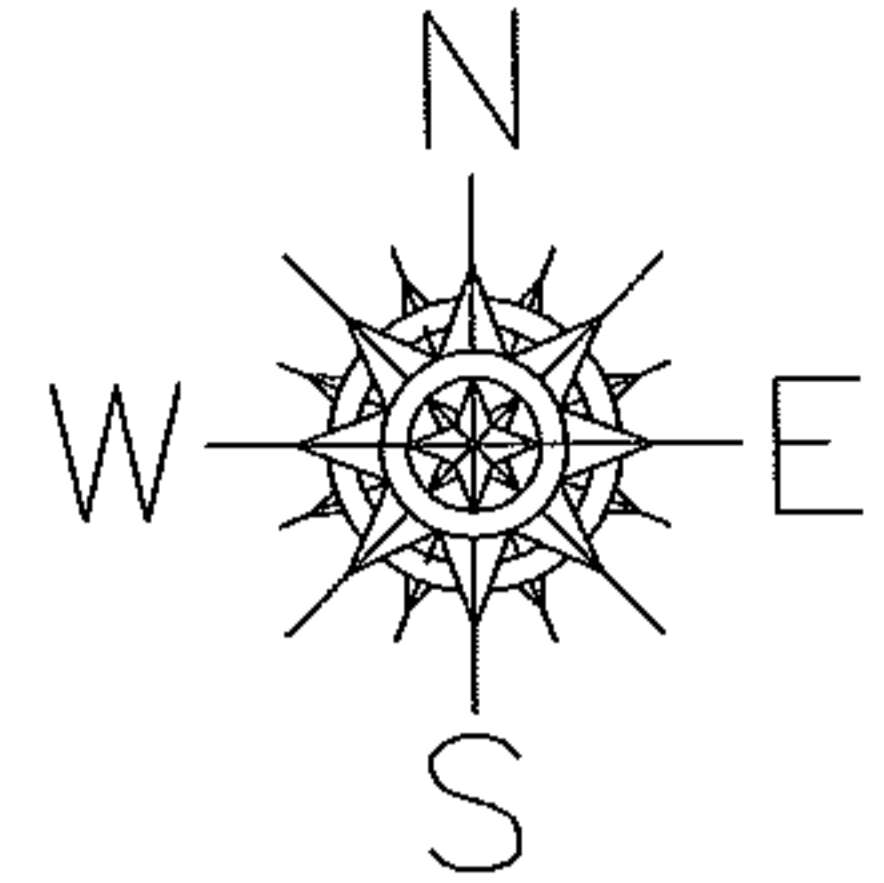


PARENT PARCEL: 06-24-065-103-001, -002, & -003

CHILD PARCEL: XX-XX-XXX-XXX-XXX

ARTING POINT: XXXXXX

12-02578-C



FRONTAGE & DEPTH CORRECTION

06-24-065-103-001

~~50 X 120~~

50 X 150

PER DV 529/319

06-24-065-103-002

~~78 X 120~~

78 X 150

PER DV 529/319

06-24-065-103-003

~~50 X 120~~

50 X 150

PER DV 529/321

S.R. 57 TAKE WAS BY EASEMENT

PRIOR INST.: 20050095371

PRIOR INST.: DV 509/319

PRIOR INST.: DV 509/321

SPLITS/DEEDS PROCESSED

LORAIN COUNTY TAX MAP DEPARTMENT
226 MIDDLE AVE. ELYRIA, OHIO

SURVEYED BY: NONE

CLOSURE: NONE

MAP PAGE(S): 6-82

APPROVED BY: TJS DATE: 9/11/12

SCALE: 1"= 100