

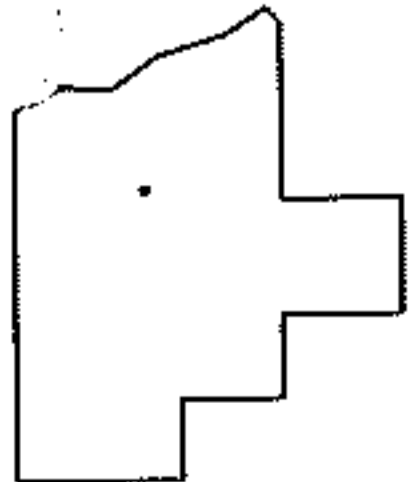
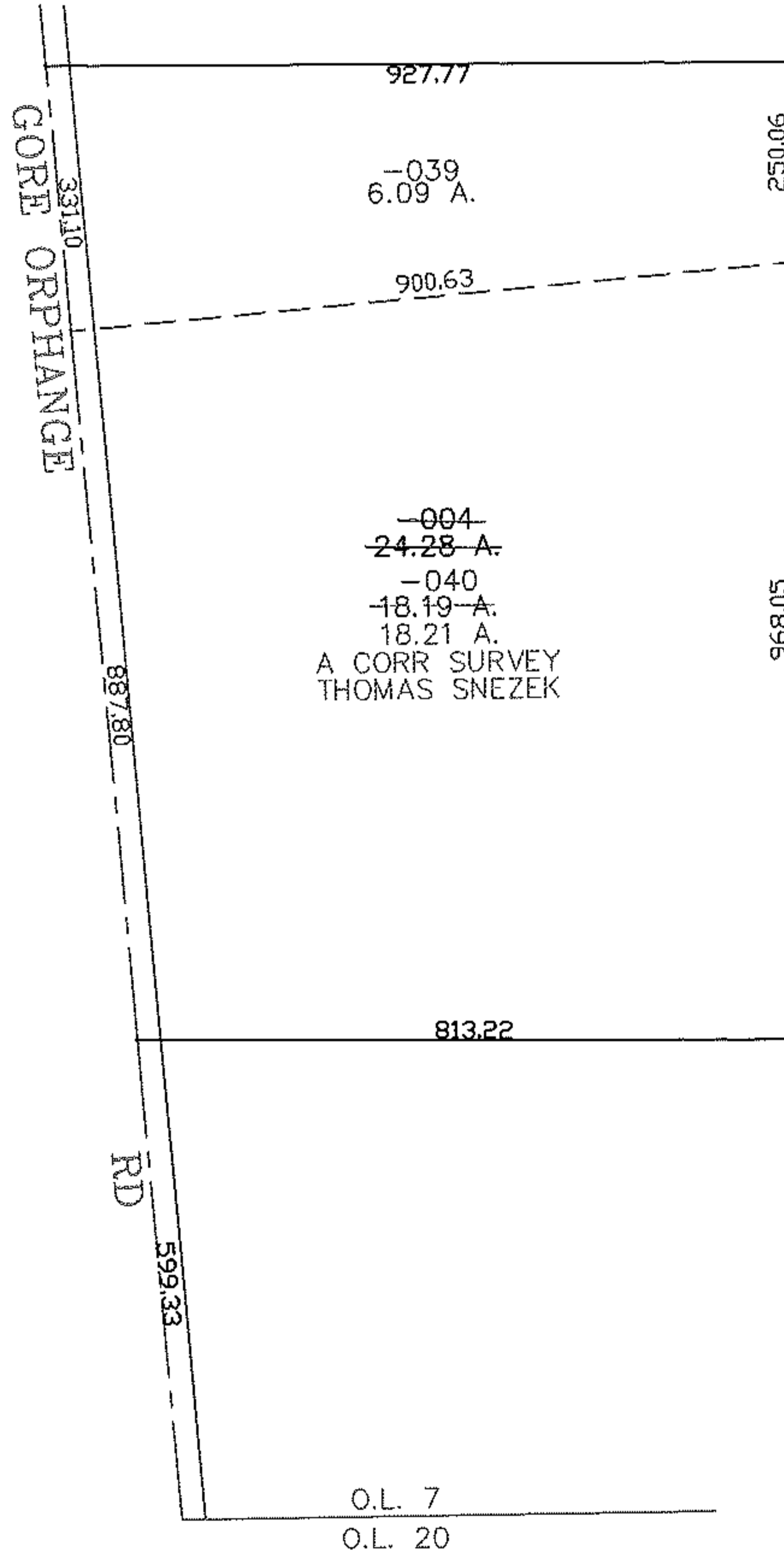
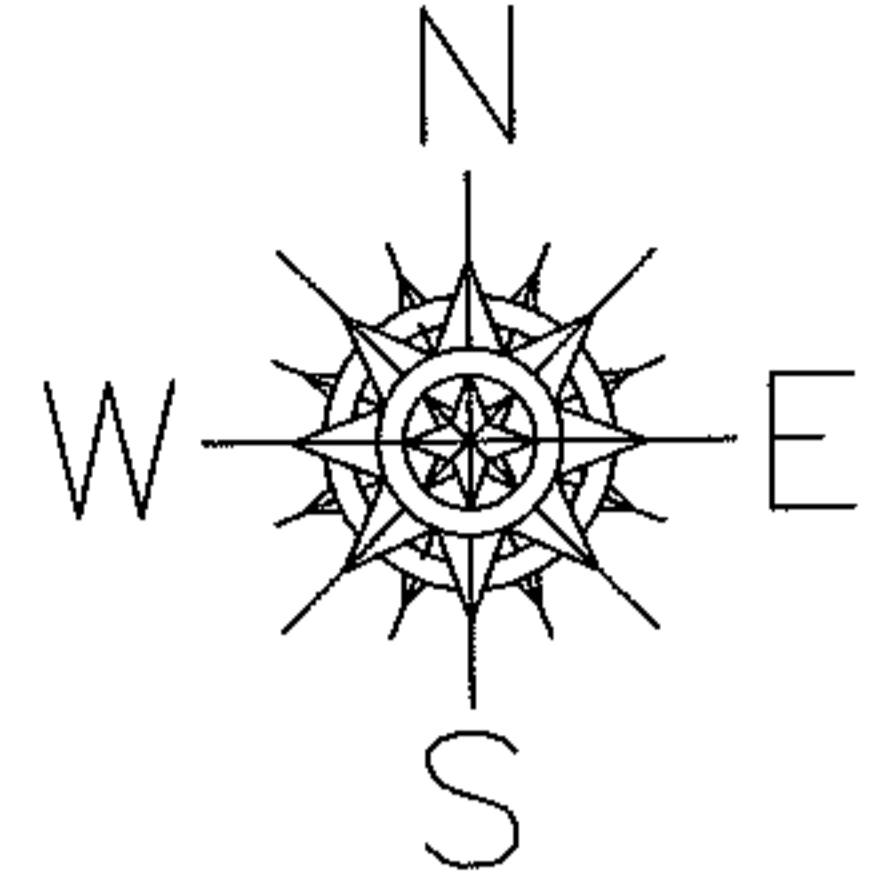
RASTER

PARENT PARCEL: 17-07-020-000-004

CHILD PARCEL: 17-07-020-000-039, -040

STARTING POINT: CENTERLINE OF GORE ORPHANGE RD & O.L. 7

08-02577



SPLITS/DEEDS PROCESSED
 LORAIN COUNTY TAX MAP DEPARTMENT
 226 MIDDLE AVE. ELYRIA, OHIO

SURVEYED BY: THOMAS SNEZEK
 CLOSURE: 0.00 : 10.000
 MAP PAGE(S): 17-07-020-B
 APPROVED BY: JAH DATE: 6-6-08
 SCALE: 1" = 300 PRIOR INSTRUMENT: 20050106619