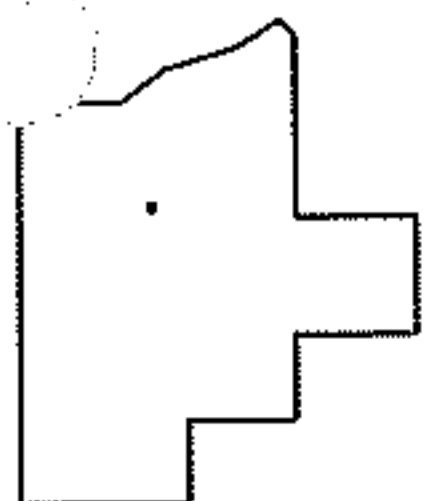
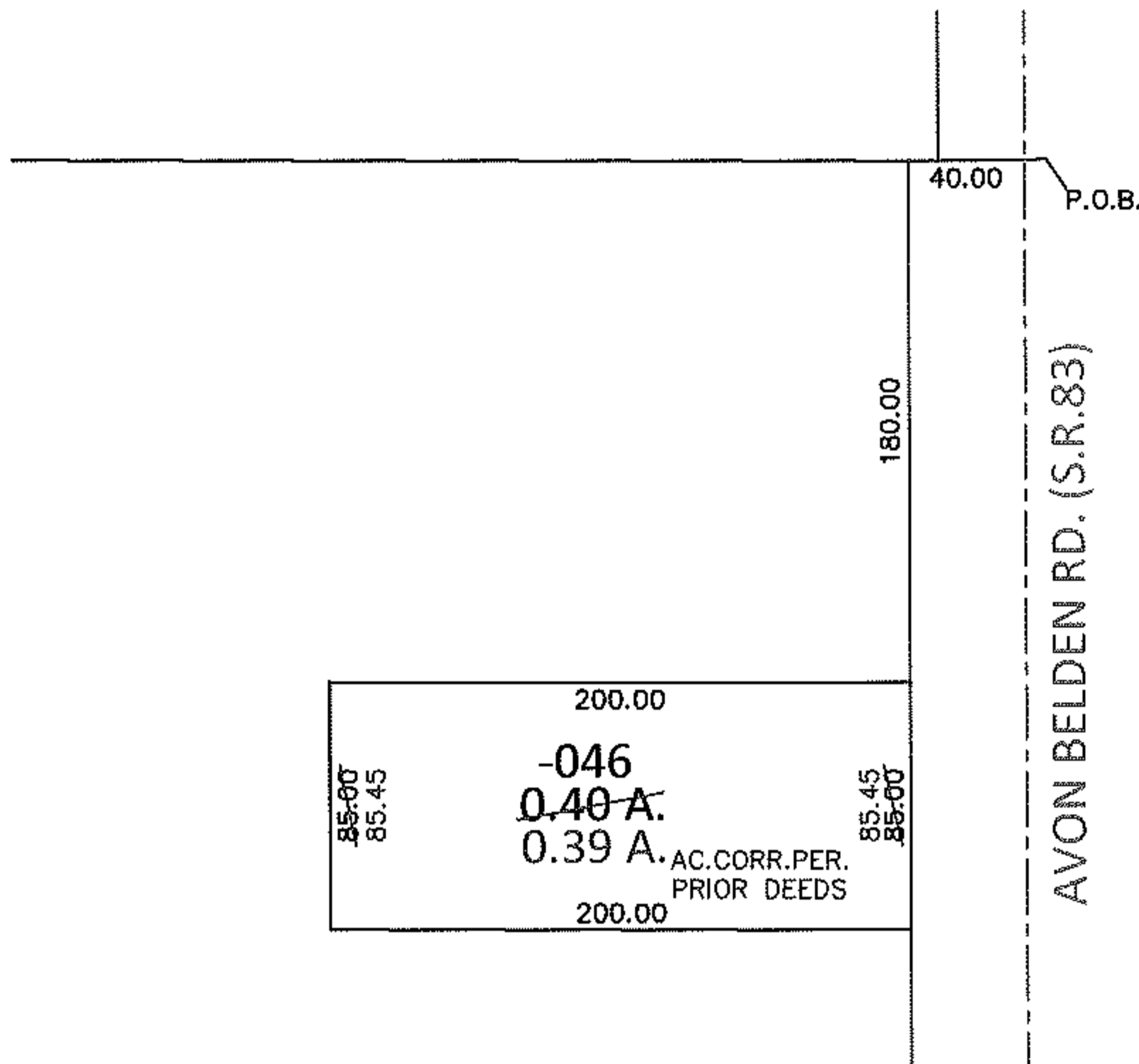
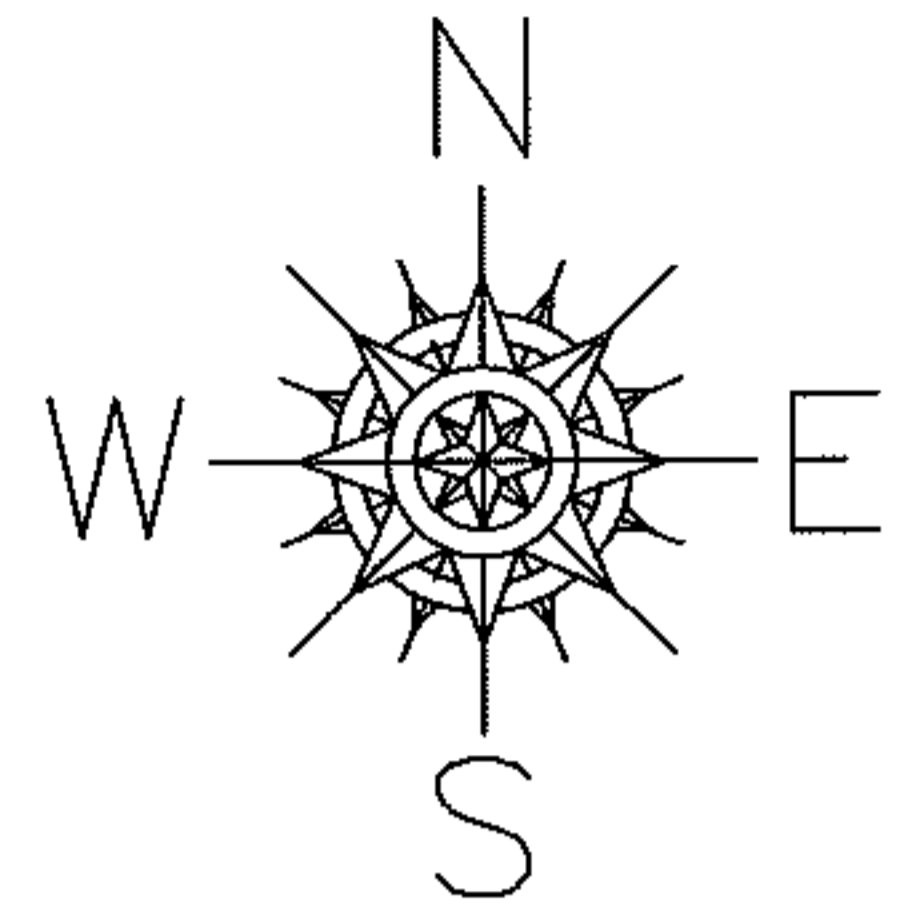


PARENT PARCEL: 07-00-030-000-046

12-02577-A

CHILD PARCEL: \_\_\_\_\_

STARTING POINT: NORTHEAST CORNER OF LAND CONVEYED TO EDWARD SMITEK(DV 1030/127)



**SPLITS/DEEDS PROCESSED**

LORAIN COUNTY TAX MAP DEPARTMENT  
226 MIDDLE AVE. ELYRIA, OHIO

SURVEYED BY: N/A  
 CLOSURE: .00:10,000  
 MAP PAGE(S): 7-00-030-B  
 APPROVED BY: RRM DATE: 11-15-12  
 SCALE: 1"= 100 PRIOR INST.: 20050080585