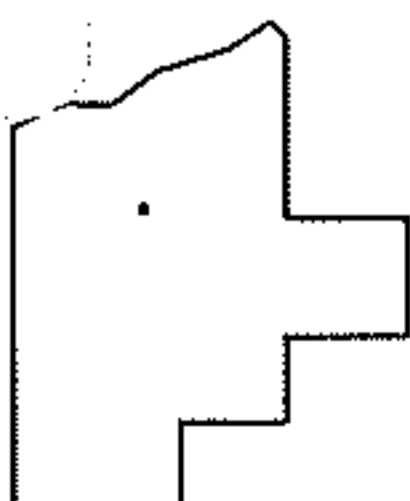
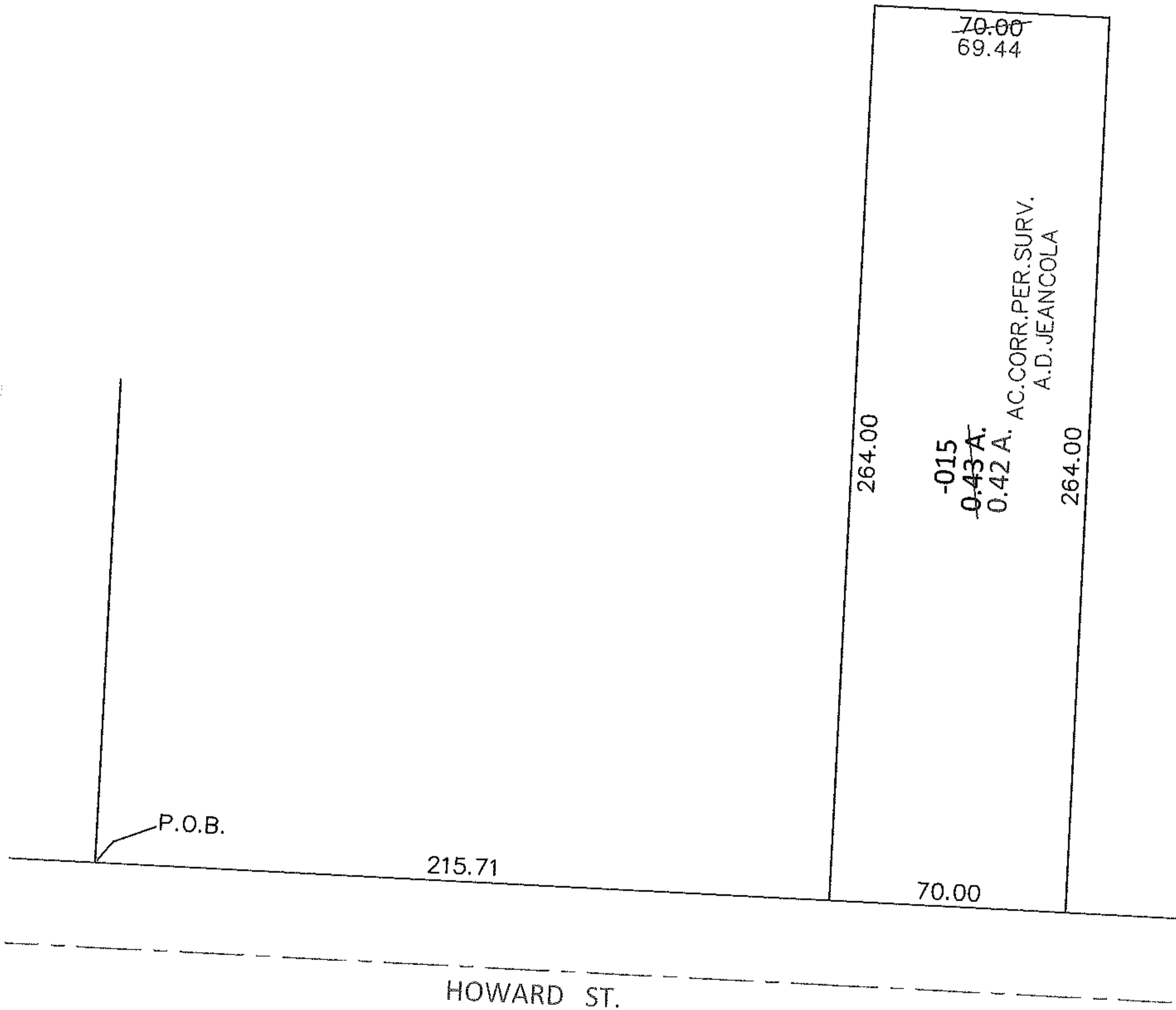
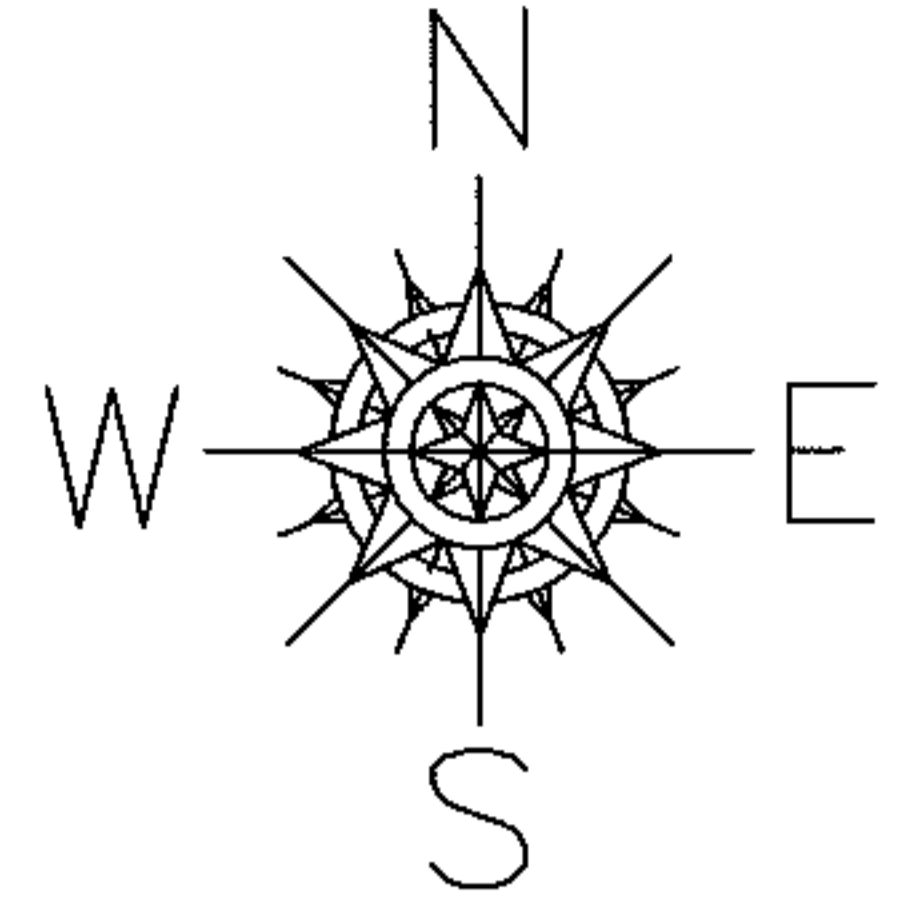


PARENT PARCEL: 06-25-026-101-015

12-02574-C

CHILD PARCEL: _____

STARTING POINT: THE INTERSECTION OF NORTH LINE OF HOWARD ST. AND EAST LINE OF LAND CONVEYED TO KENNETH R. & HALLIE P. GRIEVE(DV.649/509)



SPLITS/DEEDS PROCESSED

LORAIN COUNTY TAX MAP DEPARTMENT
226 MIDDLE AVE. ELYRIA, OHIO

SURVEYED BY: A.D. JEANCOLA

CLOSURE: 1: 6725.91

MAP PAGE(S): 6-71

APPROVED BY: RRM DATE: 11-19-12

SCALE: 1" = 50' PRIOR INST.: 20120426924