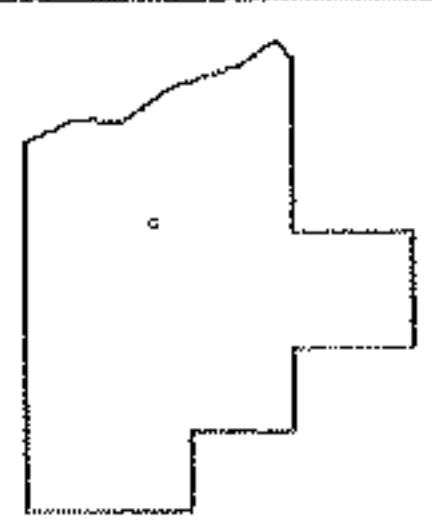
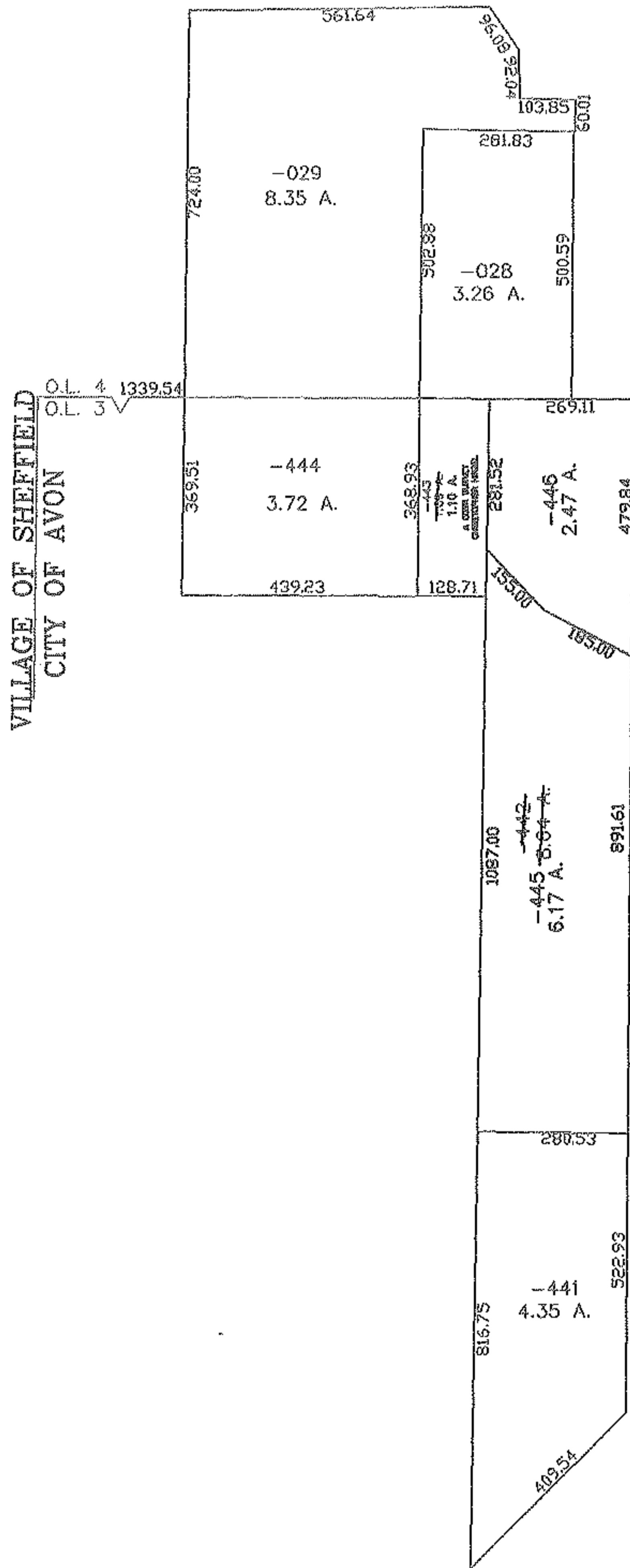
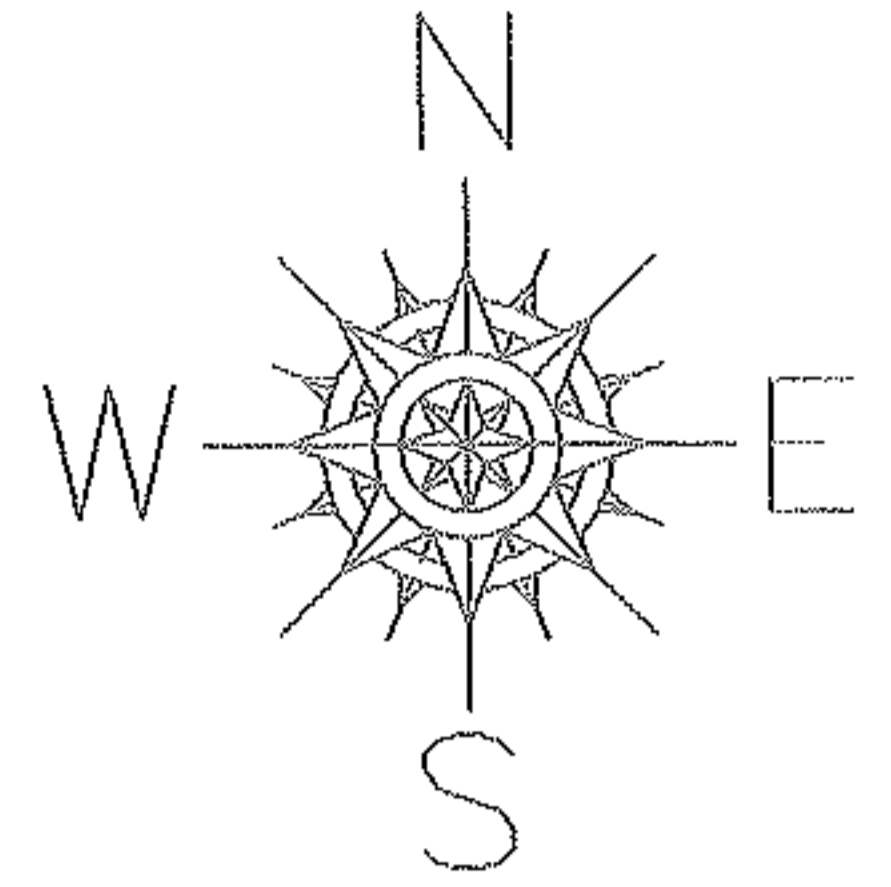


PARENT PARCEL: 04-00-003-101-442, -443

CHILD PARCEL: 04-00-003-101-445, -446

STARTING POINT: INSECTION OF O.L. 3 & O.L. 4 & CITY OF AVON/VILLAGE OF SHEFF LINE

08-02569



SPLITS/DEEDS PROCESSED

LORAIN COUNTY TAX MAP DEPARTMENT
226 MIDDLE AVE. ELYRIA, OHIO

SURVEYED BY: CHRISTOPHER HIRZEL
 CLOSURE: 0.00 : 10.000
 MAP PAGE(S): 04-00-004-E 04-00-003-A,B
 APPROVED BY: JAH DATE: 5-15-08
 SCALE: 1" = 400 PRIOR INSTRUMENT: 20080250493