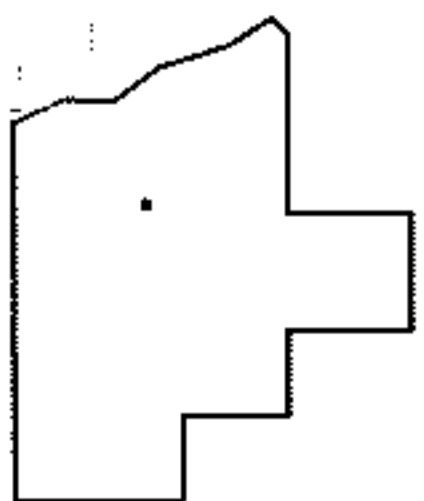
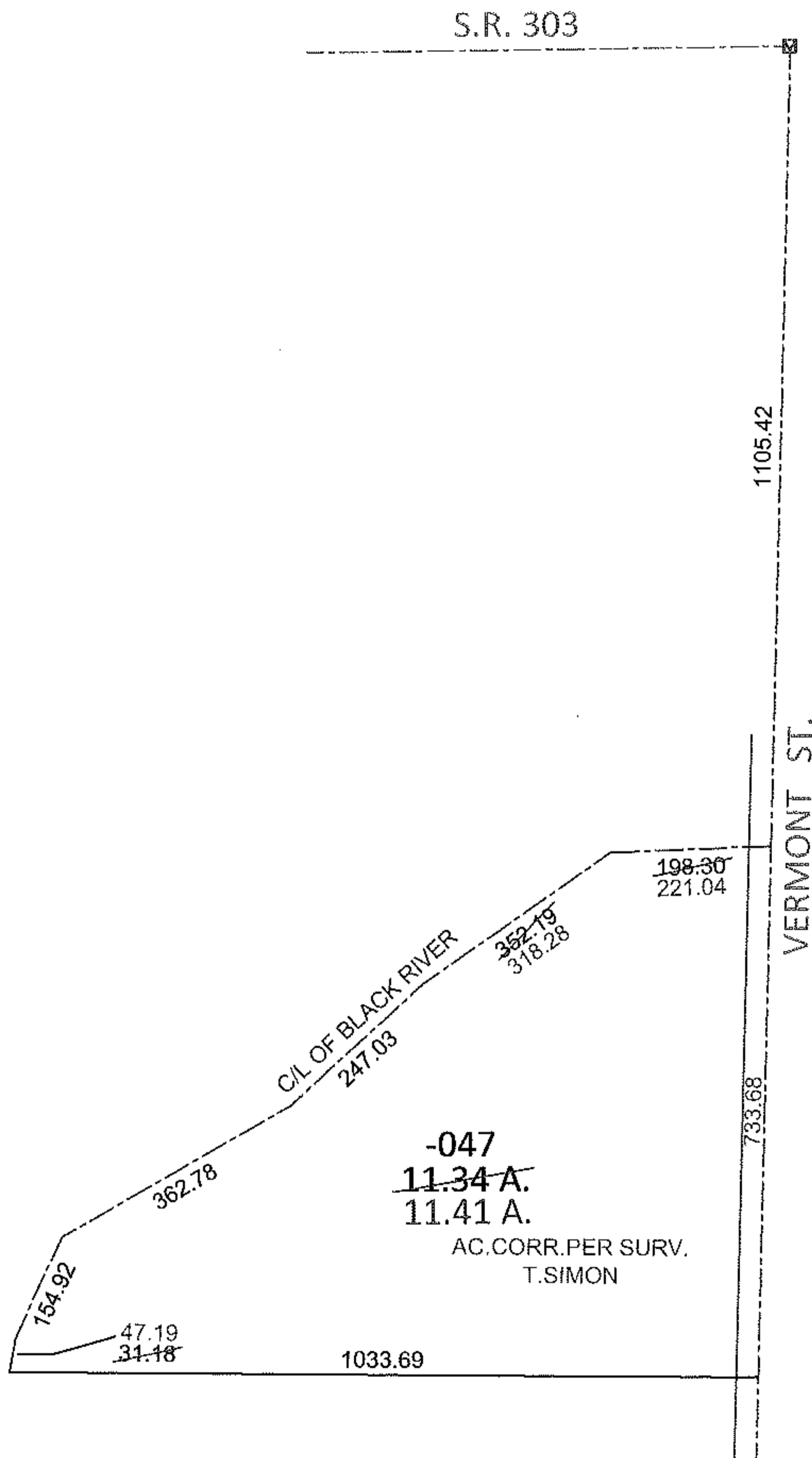
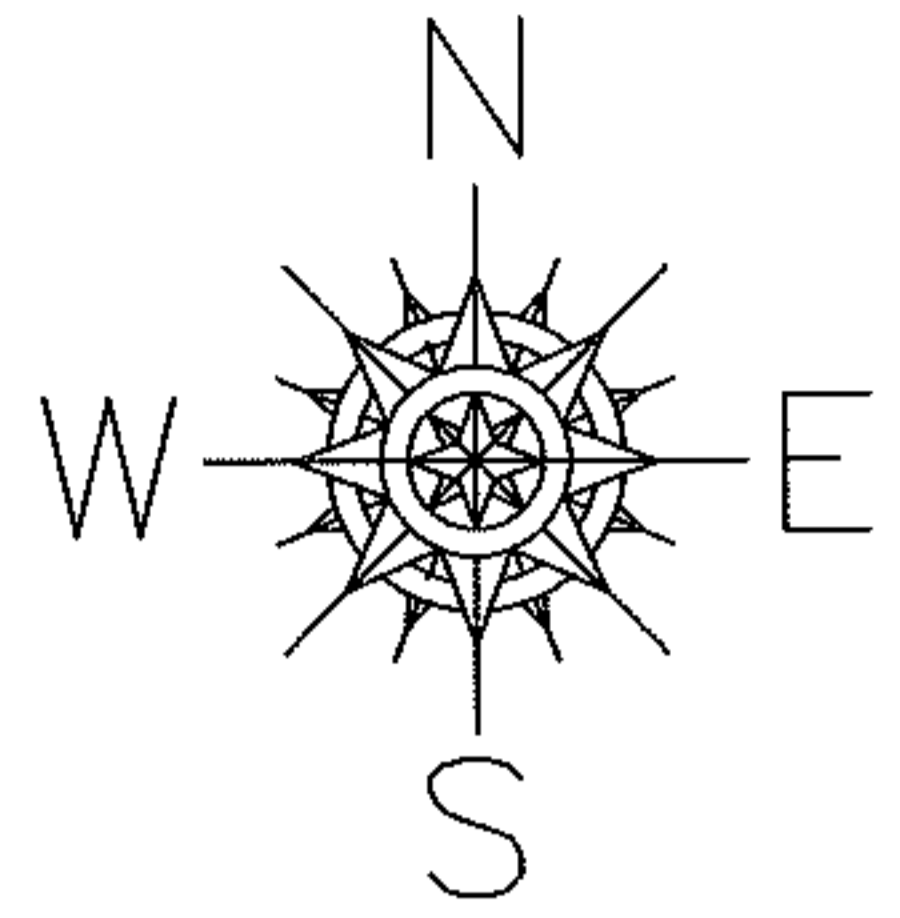


PARENT PARCEL: 15-00-052-000-047

CHILD PARCEL: _____

12-02569-D

STARTING POINT: AT A MON BOX AT THE INTERSECTION OF S.R.303 AND C/L OF VERMONT ST.



SPLITS/DEEDS PROCESSED

LORAIN COUNTY TAX MAP DEPARTMENT
226 MIDDLE AVE. ELYRIA, OHIO

SURVEYED BY: THOMAS A. SIMON

CLOSURE: .01:10,000

MAP PAGE(S): 15-H

APPROVED BY: RRM DATE: 8-31-12

SCALE: 1" = 300 PRIOR INST.: DV XXXX/XXX