

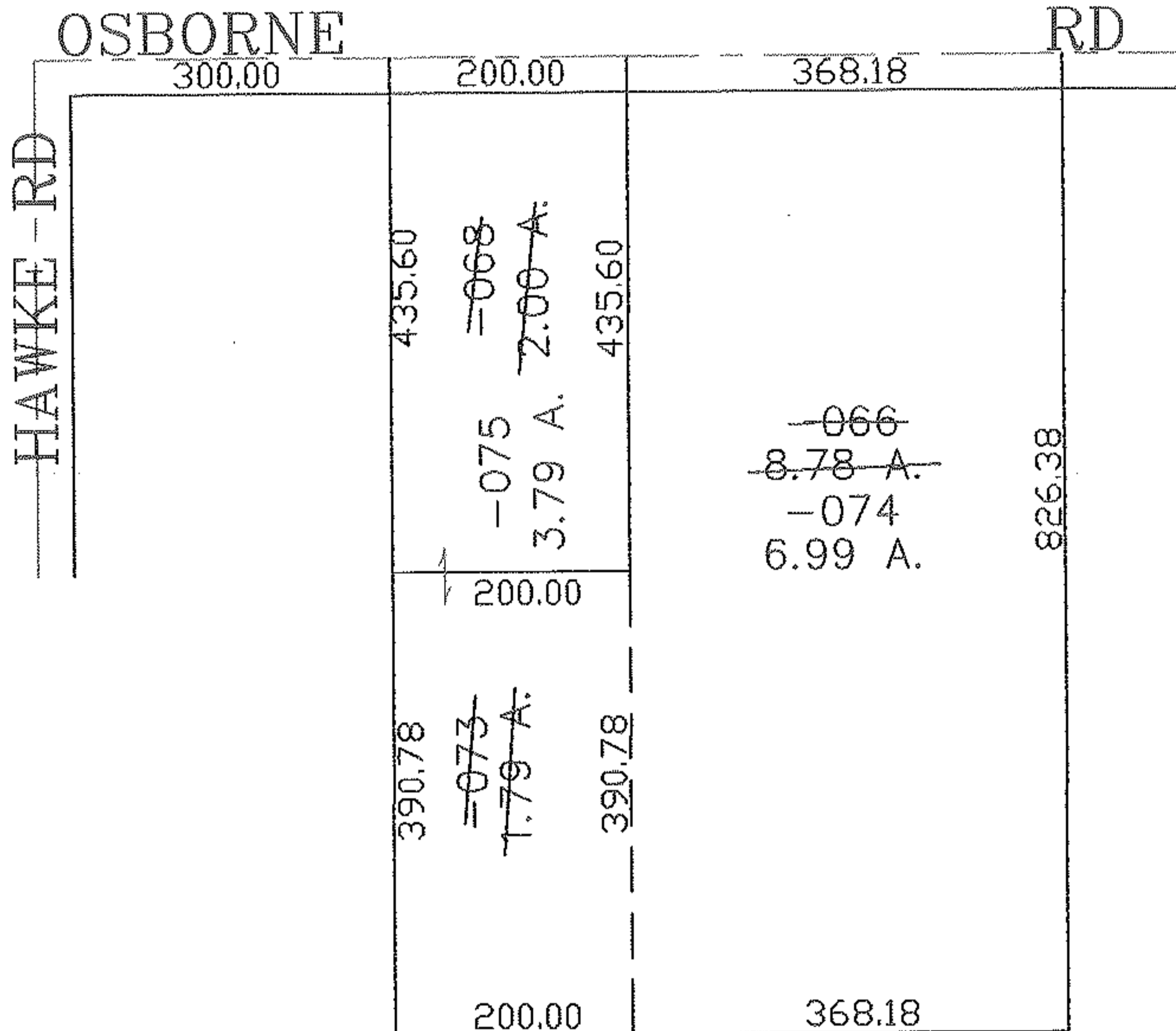
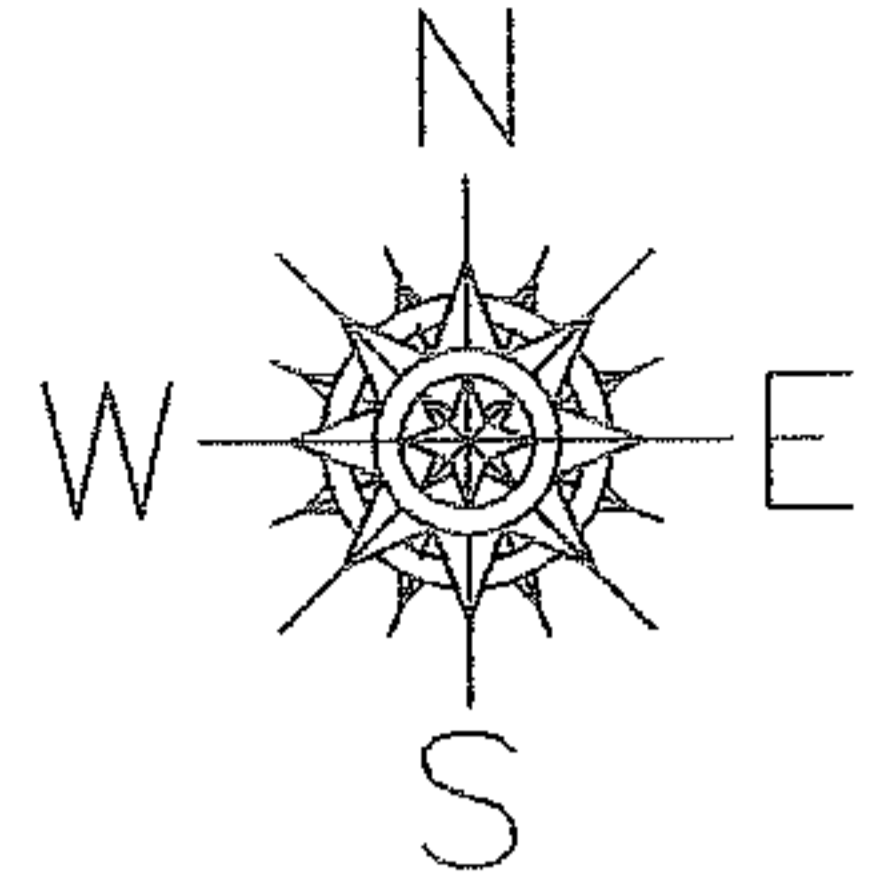
RASTER

PARENT PARCEL: 12-00-098-000-066

CHILD PARCEL: 12-00-098-000-073 THRU -075

STARTING POINT: CENTERLINE OF HAWKE RD & OSBORNE RD

08-02564



SPLITS/DEEDS PROCESSED
 LORAIN COUNTY TAX MAP DEPARTMENT
 226 MIDDLE AVE. ELYRIA, OHIO

SURVEYED BY: DAVID ELWELL
 CLOSURE: 0.00 : 10.000
 MAP PAGE(S): 12-00-098-A
 APPROVED BY: JAH DATE: 5-2-08
 SCALE: 1" = 200 PRIOR INSTRUMENT: 20050052654