

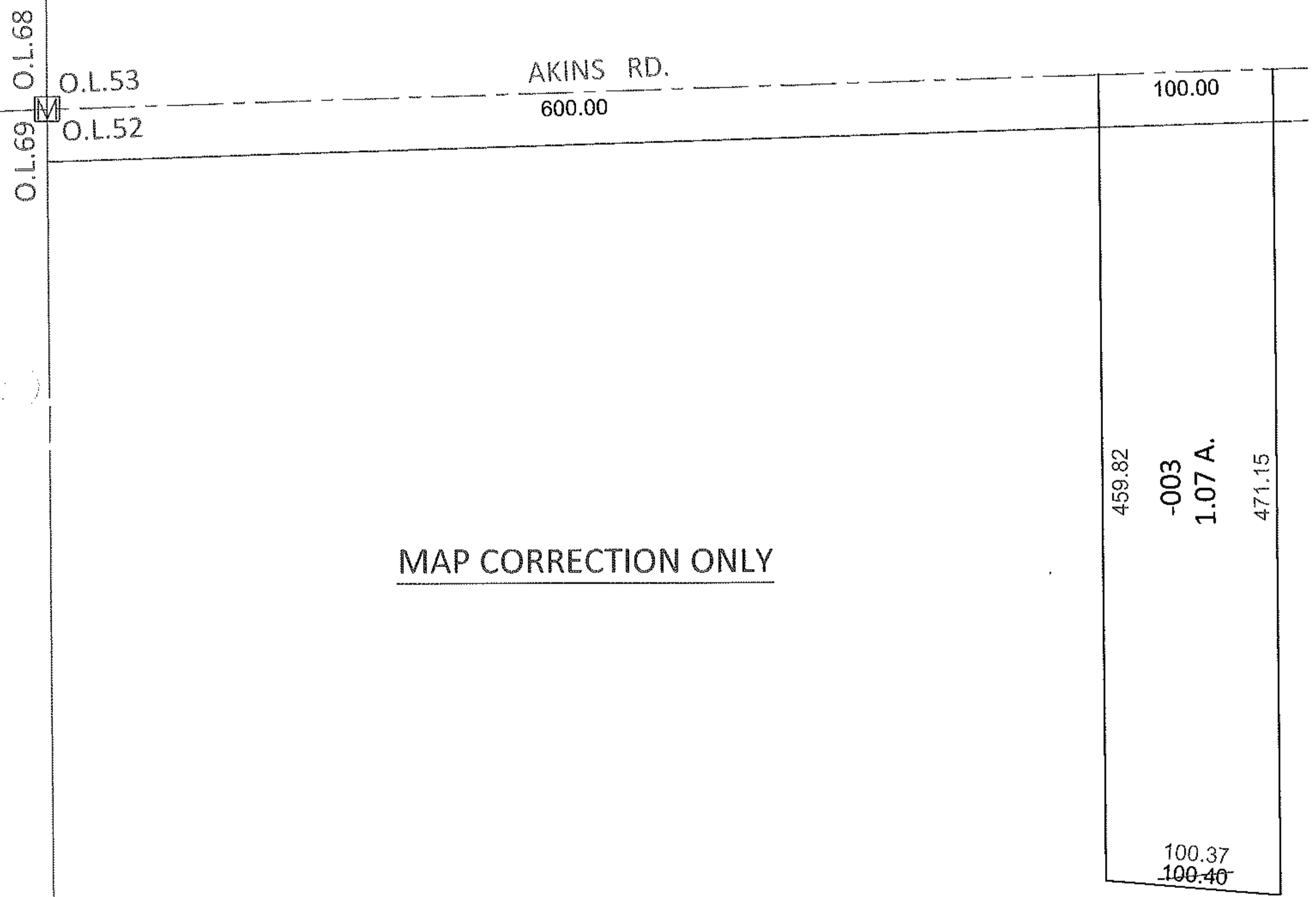
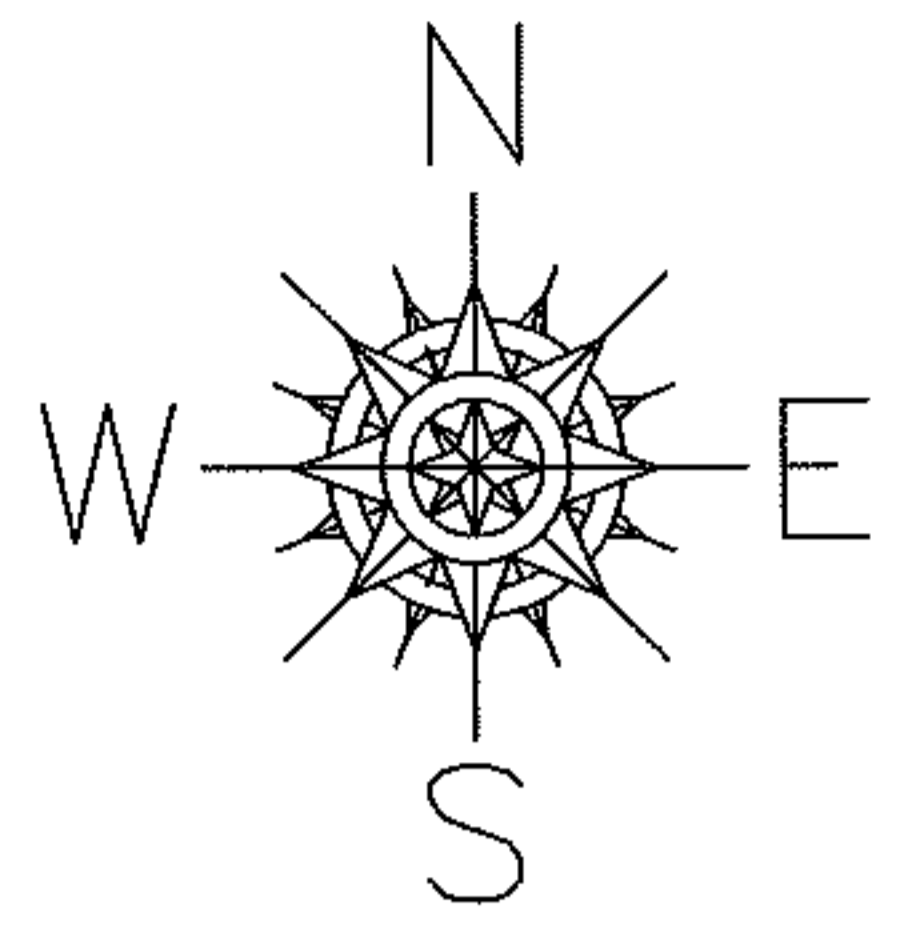
R. M. Powers

PARENT PARCEL: 12-00-052-000-003

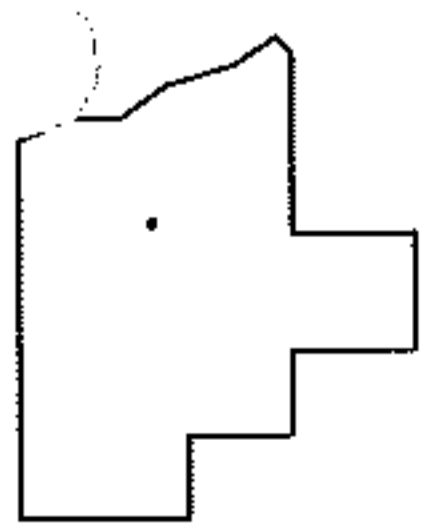
CHILD PARCEL: XX-XX-XXX-XXX-XXX

12-02562-D

STARTING POINT: AT A MON BOX AT THE NORTHWEST CORNER OF O.L.52



MAP CORRECTION ONLY



SPLITS/DEEDS PROCESSED

LORAIN COUNTY TAX MAP DEPARTMENT
226 MIDDLE AVE. ELYRIA, OHIO

SURVEYED BY: DANIEL M. POWERS
 CLOSURE: .01:10,000
 MAP PAGE(S): 12-F
 APPROVED BY: RRM DATE: 8-27-12
 SCALE: 1"=100 PRIOR INST.: 20040987556