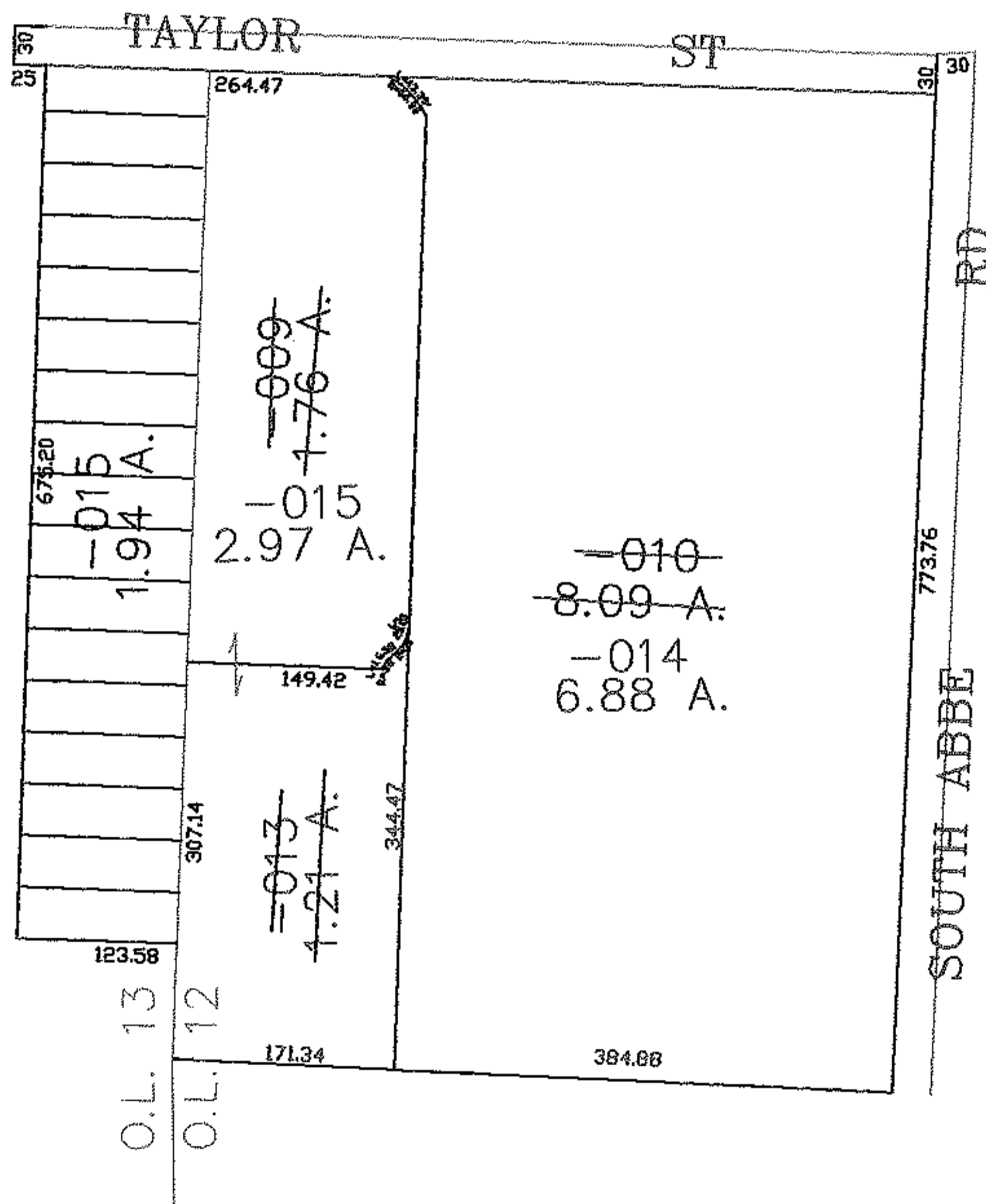
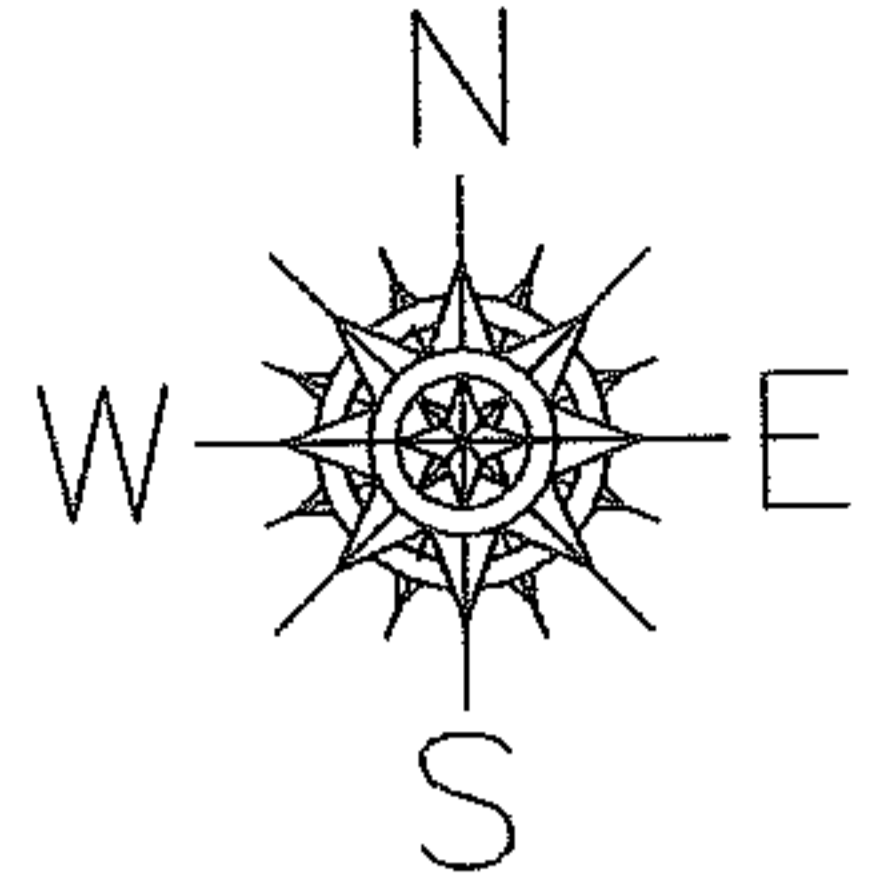


PARENT PARCEL: 06-25-012-105-010, -009
CHILD PARCEL: 06-25-012-105-013 THRU -015
STARTING POINT: CENTERLIND OF TAYLOR ST & SOUTH ABBE RD

08-02557



SPLITS/DEEDS PROCESSED

LORAIN COUNTY TAX MAP DEPARTMENT
226 MIDDLE AVE. ELYRIA, OHIO

SURVEYED BY: THOMAS SIMON
CLOSURE: 0.00 : 10.000
MAP PAGE(S): 6-106
APPROVED BY: JAH DATE: 4-24-08
SCALE: 1" = 200 PRIOR INSTRUMENT: 20020844343