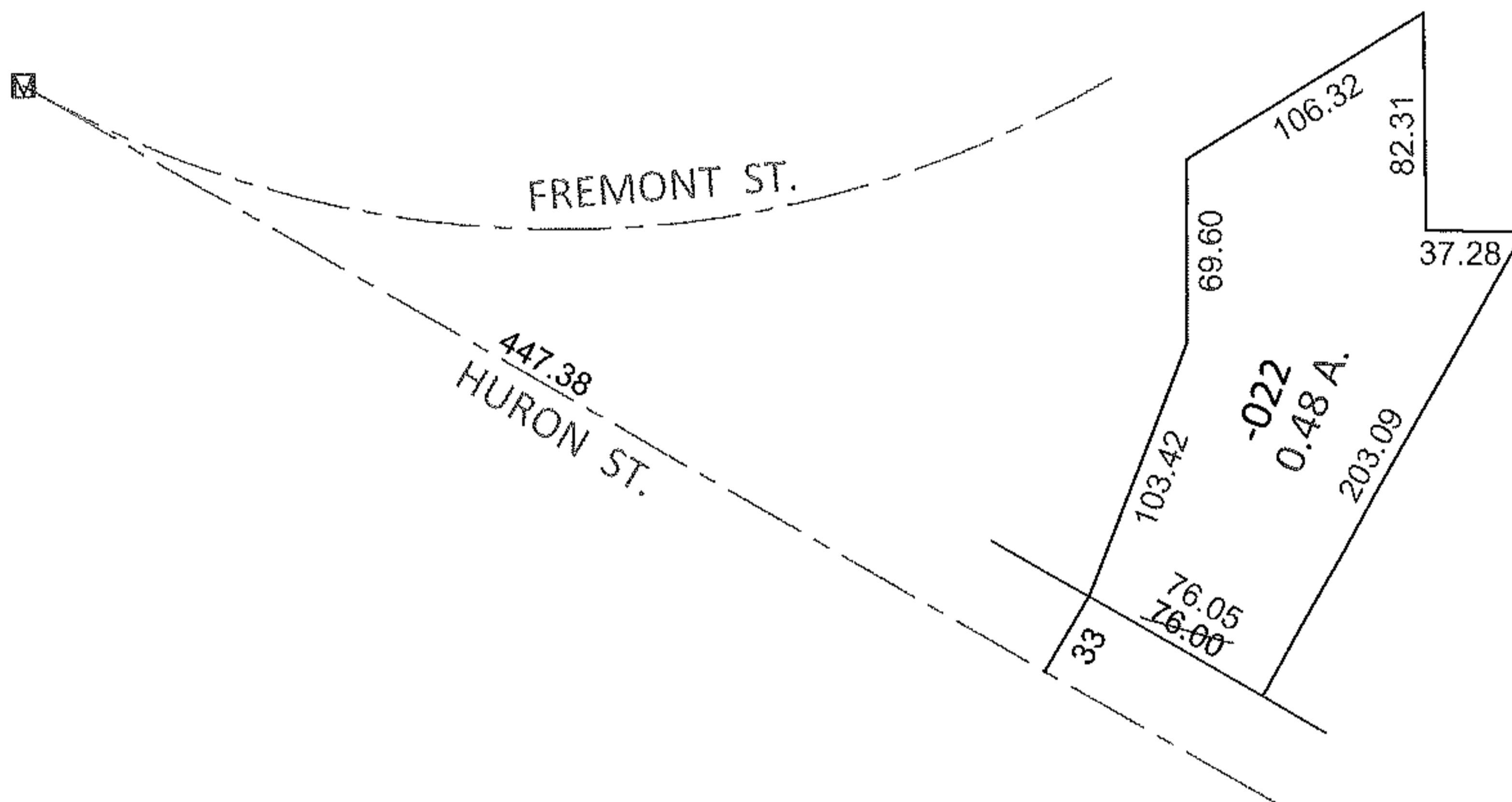
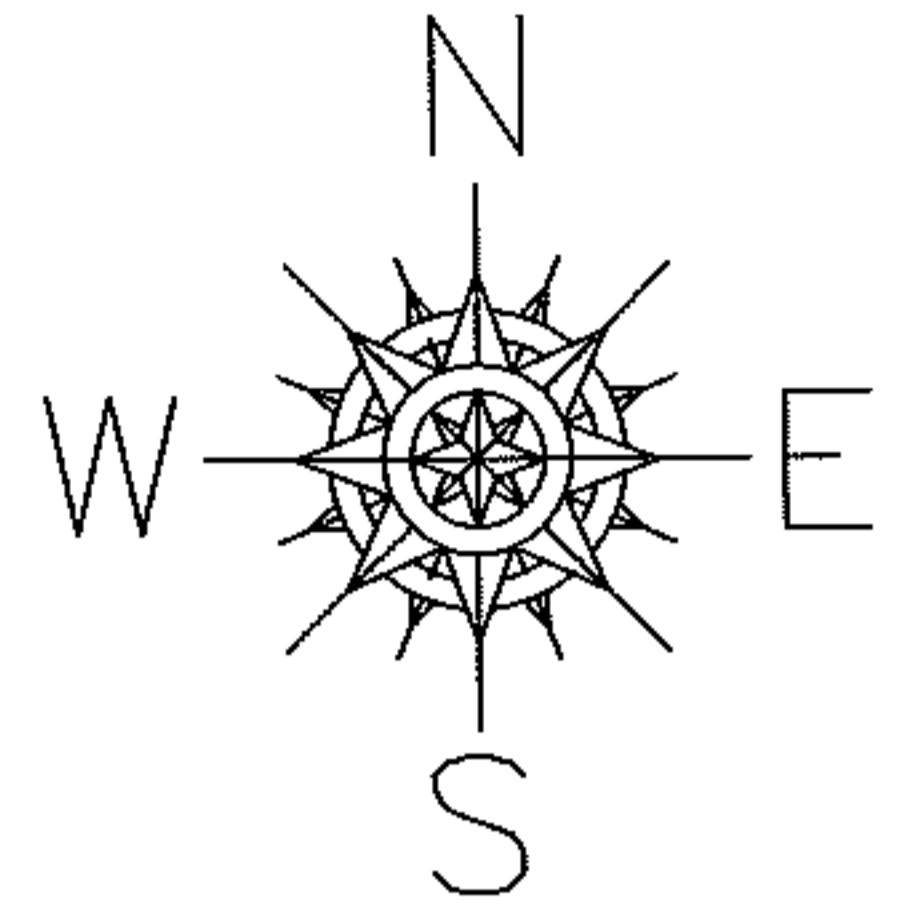


PARENT PARCEL: 06-24-106-000-022

CHILD PARCEL: \_\_\_\_\_

12-02554-D

STARTING POINT: AT A MON BOX AT THE INTERSECTION OF C/L OF HURON ST. AND C/L OF FREMONT ST.



FRONTAGE AND DEPTH TO ACREAGE CORRECTION

06-24-106-000-022

0.48 A.

~~76 X 250~~

PER SURV. BY M.CAMILLY JR.

SPLITS/DEEDS PROCESSED

LORAIN COUNTY TAX MAP DEPARTMENT  
226 MIDDLE AVE. ELYRIA, OHIO

SURVEYED BY: MICHAEL A. CAMILLY JR.

CLOSURE: .01:10,000

MAP PAGE(S): 6-99

APPROVED BY: RRM DATE: 8-15-12

SCALE: 1"= 100 PRIOR INST.: 20120407035