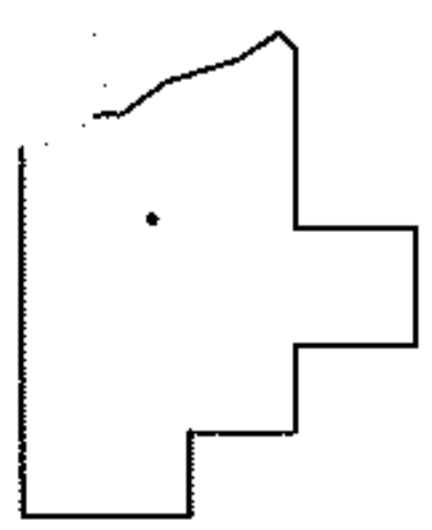
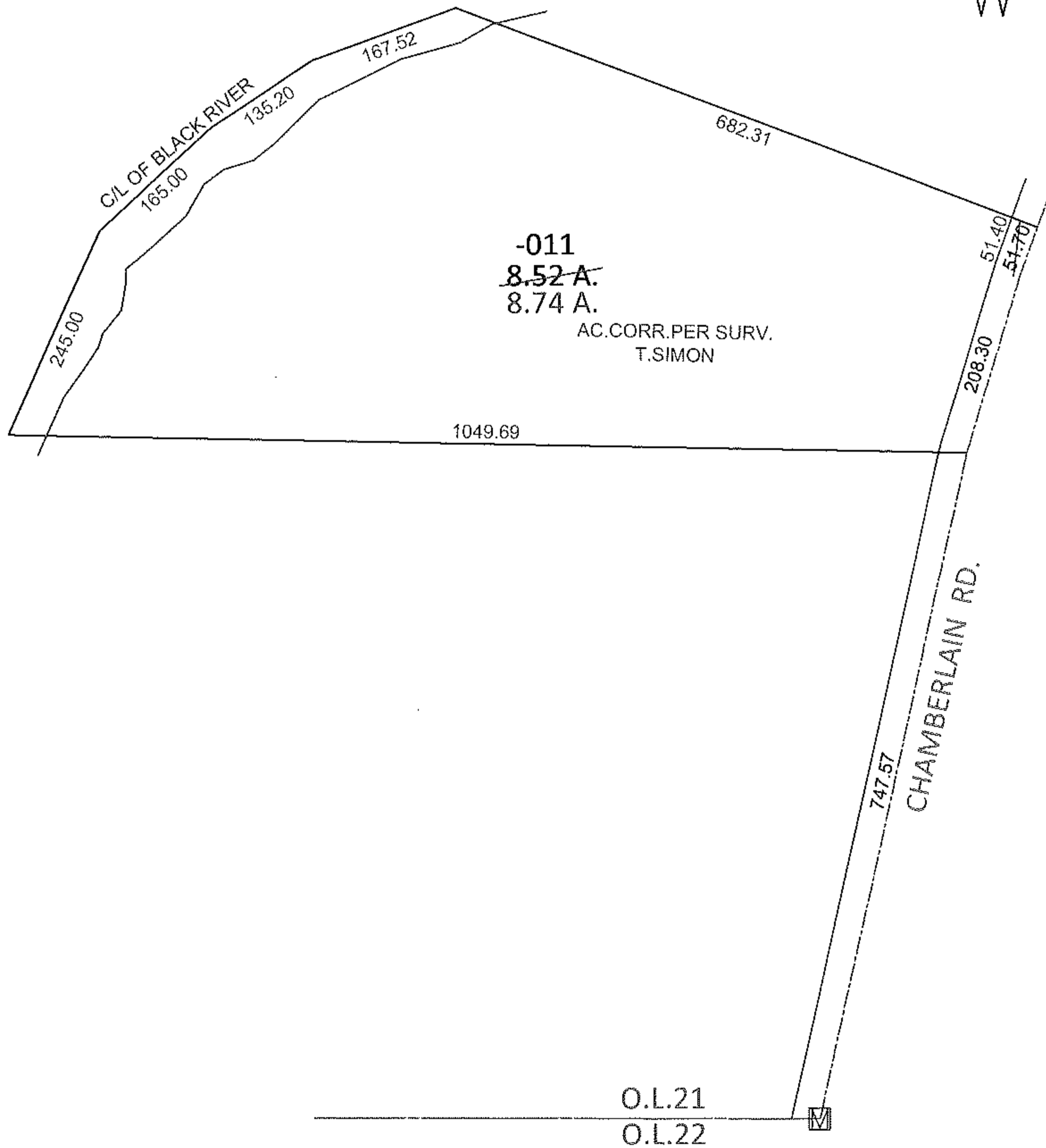
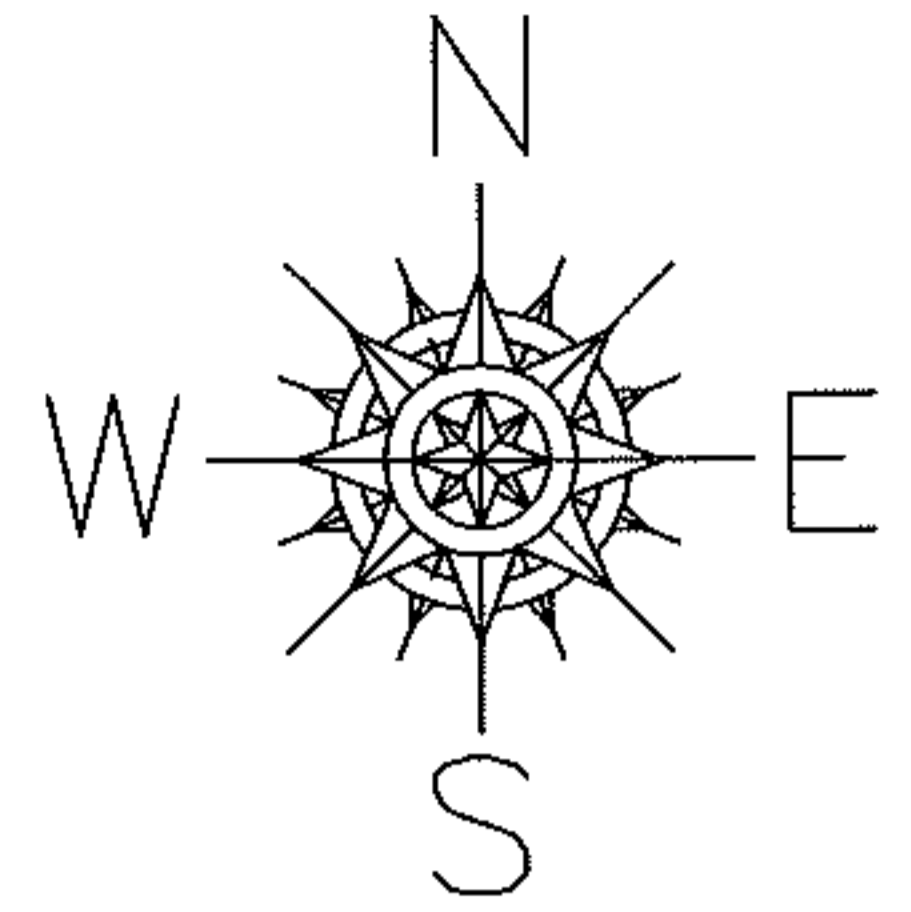


PARENT PARCEL: 16-00-021-000-011

CHILD PARCEL: _____

STARTING POINT: AT A MON BOX AT THE INTERSECTION OF C/L OF CHAMBERLAIN RD. AND SOUTH LINE OF O.L.21

12-02547-A



SPLITS/DEEDS PROCESSED

LORAIN COUNTY TAX MAP DEPARTMENT
226 MIDDLE AVE. ELYRIA, OHIO

SURVEYED BY:	THOMAS A. SIMON
CLOSURE:	.01:10,000
MAP PAGE(S):	16-A
APPROVED BY:	RRM DATE: 8-3-12
SCALE:	1" = 200 PRIOR INST.: 20120411794