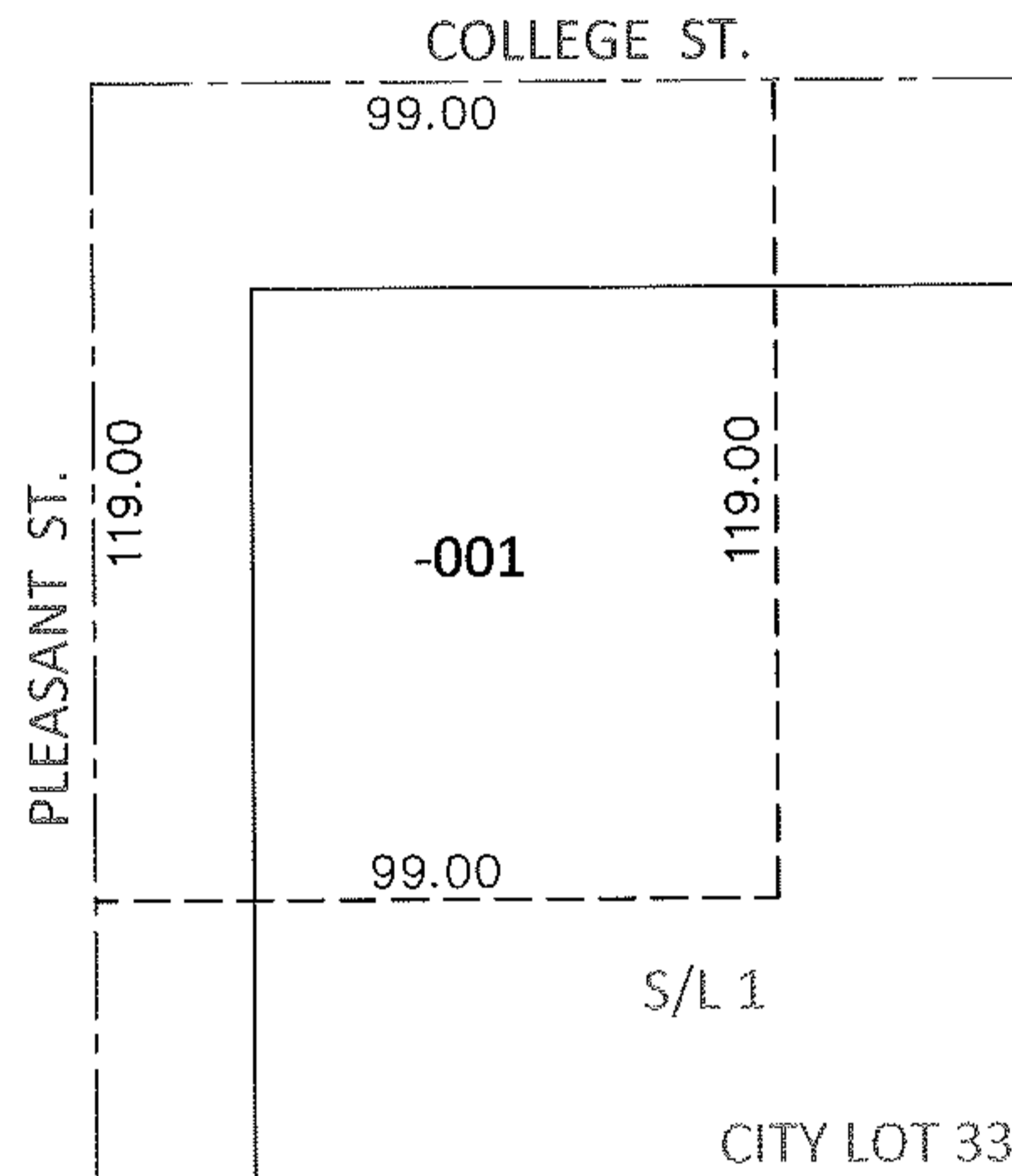
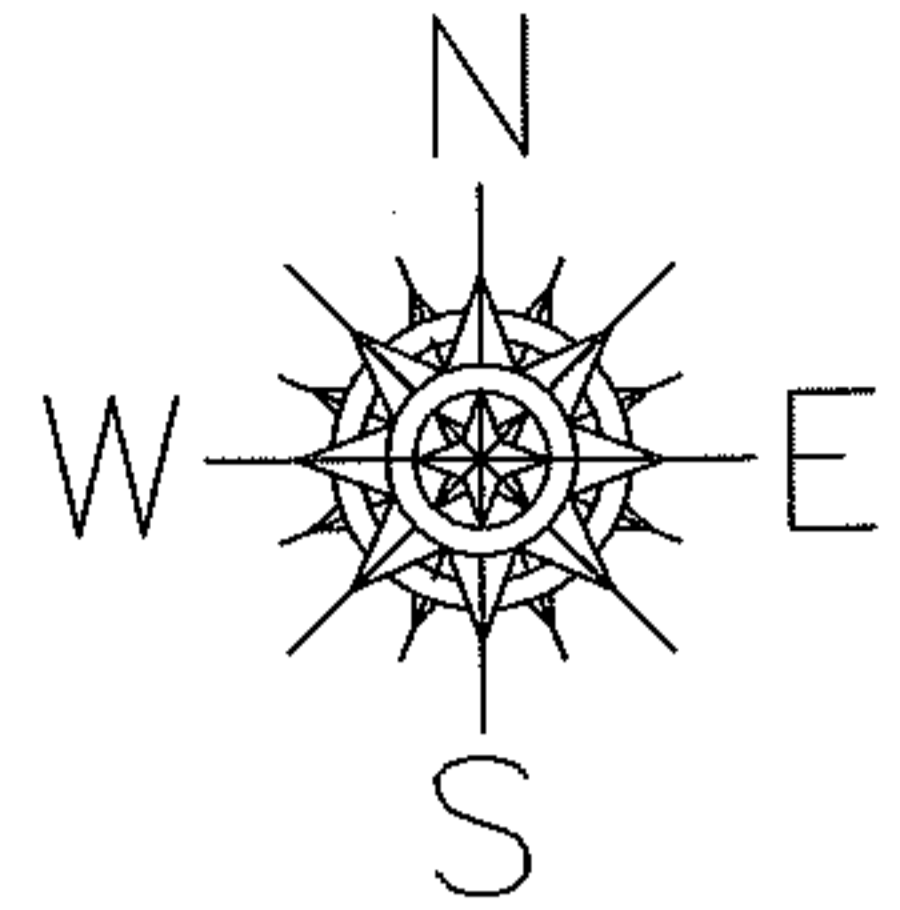


PARENT PARCEL: 09-00-086-106-001

CHILD PARCEL: \_\_\_\_\_

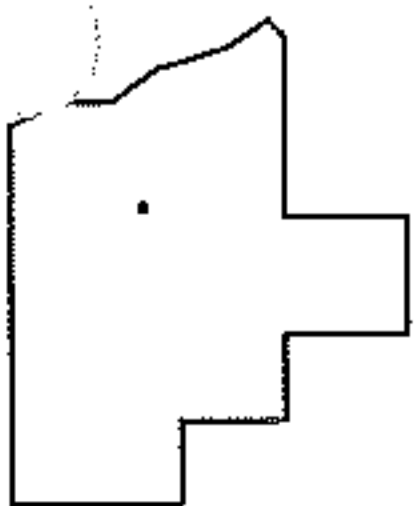
STARTING POINT: INTERSECTION OF C/L OF COLLEGE ST. AND C/L OF PLEASANT ST.

12-02541-A



FRONTAGE AND DEPTH CORRECTION

09-00-086-106-001  
 99 X 119  
~~76 X~~  
 PER PRIOR DEEDS



SPLITS/DEEDS PROCESSED

LORAIN COUNTY TAX MAP DEPARTMENT  
 226 MIDDLE AVE. ELYRIA, OHIO

SURVEYED BY: N/A  
 CLOSURE: N/A  
 MAP PAGE(S): 9-00-086-A  
 APPROVED BY: RRM DATE: 11-19-12  
 SCALE: 1"= 50' PRIOR INST.: 20120424164