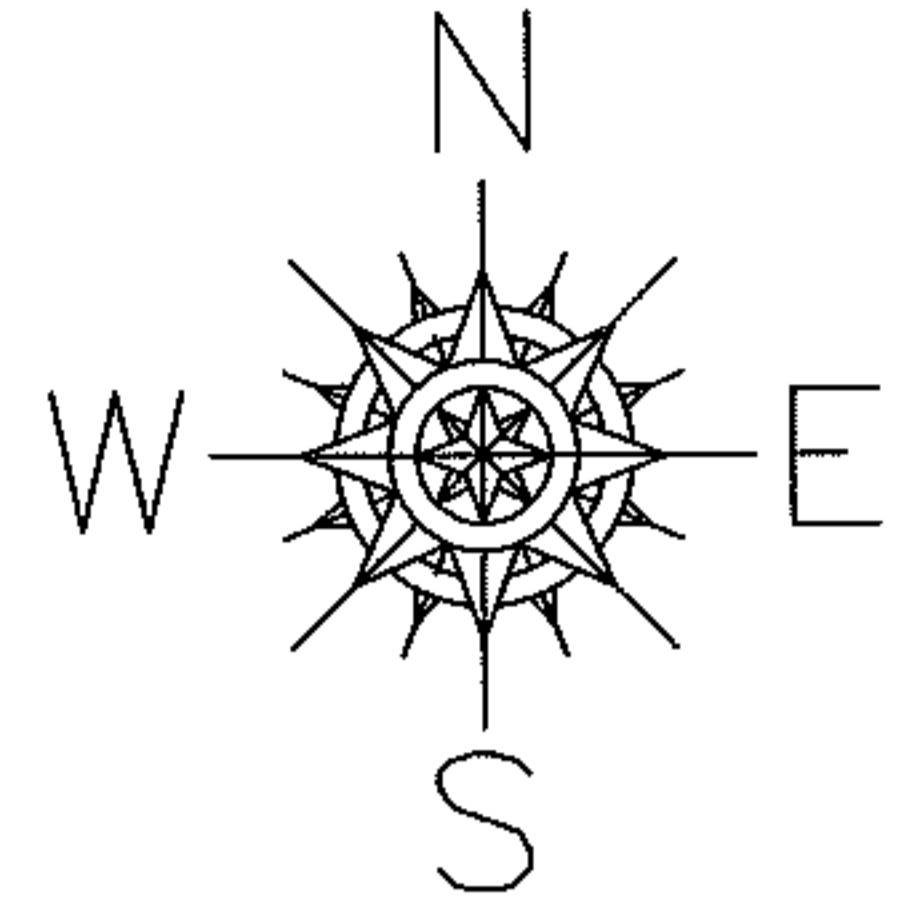
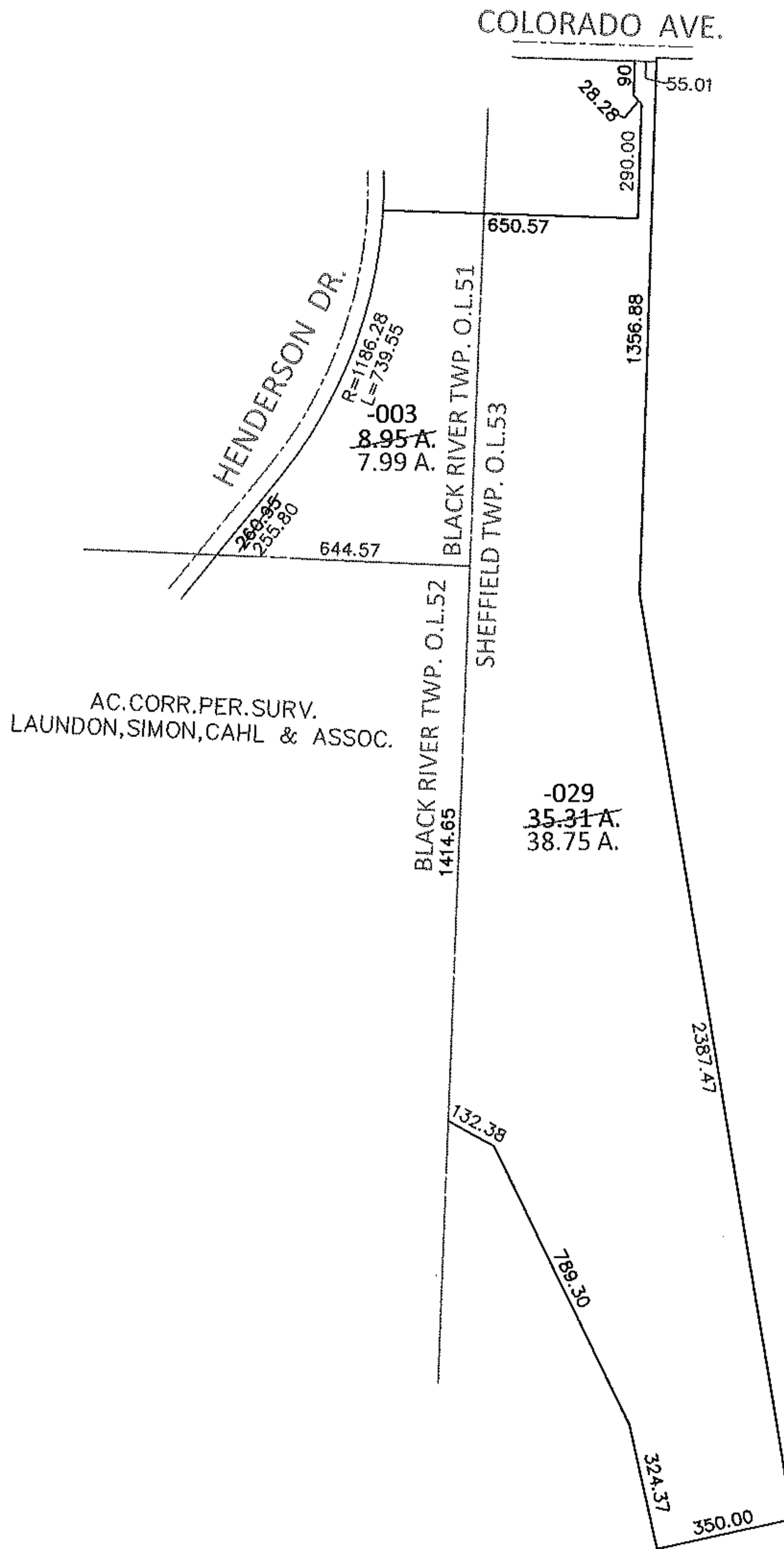


PARENT PARCEL: 02-00-051-144-003, 03-00-053-108-029

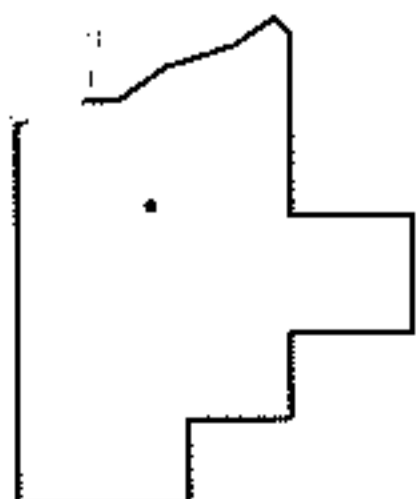
CHILD PARCEL:

STARTING POINT: SOUTHEAST CORNER OF LAND CONVEYED TO THE CITY OF LORAIN(DV 769/335)

12-02536-A



AC. CORR. PER. SURV.
LAUNDON, SIMON, CAHL & ASSOC.



SPLITS/DEEDS PROCESSED

LORAIN COUNTY TAX MAP DEPARTMENT
226 MIDDLE AVE. ELYRIA, OHIO

SURVEYED BY: LAUNDON, SIMON, CAHL & ASSOC.
 CLOSURE: .01:10,000
 MAP PAGE(S): 3-A, 3-00-053-A, 2-00-051-B
 APPROVED BY: RRM DATE: 11-19-12
 SCALE: 1"= 500 PRIOR INST.: 20120420443