

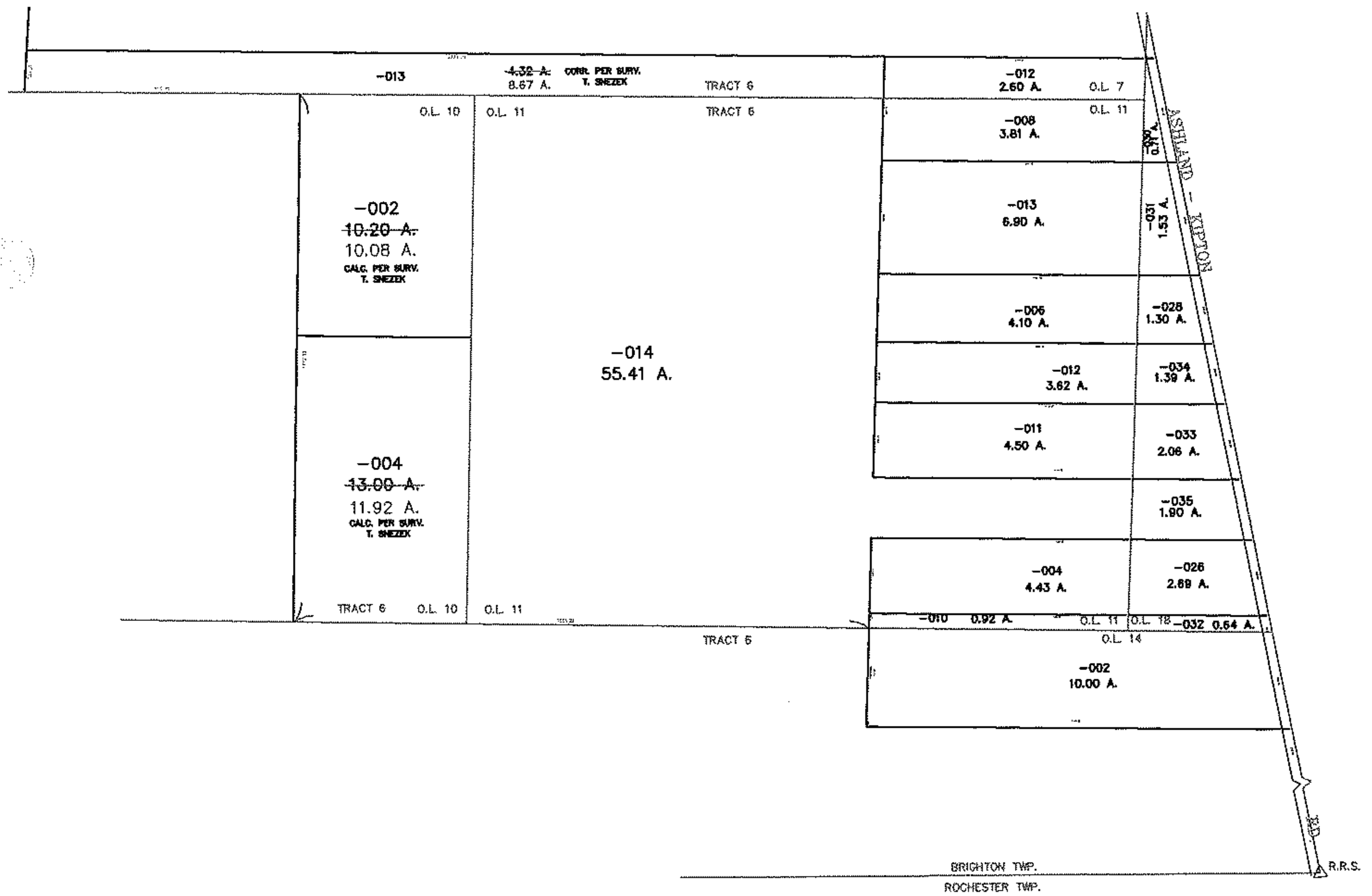
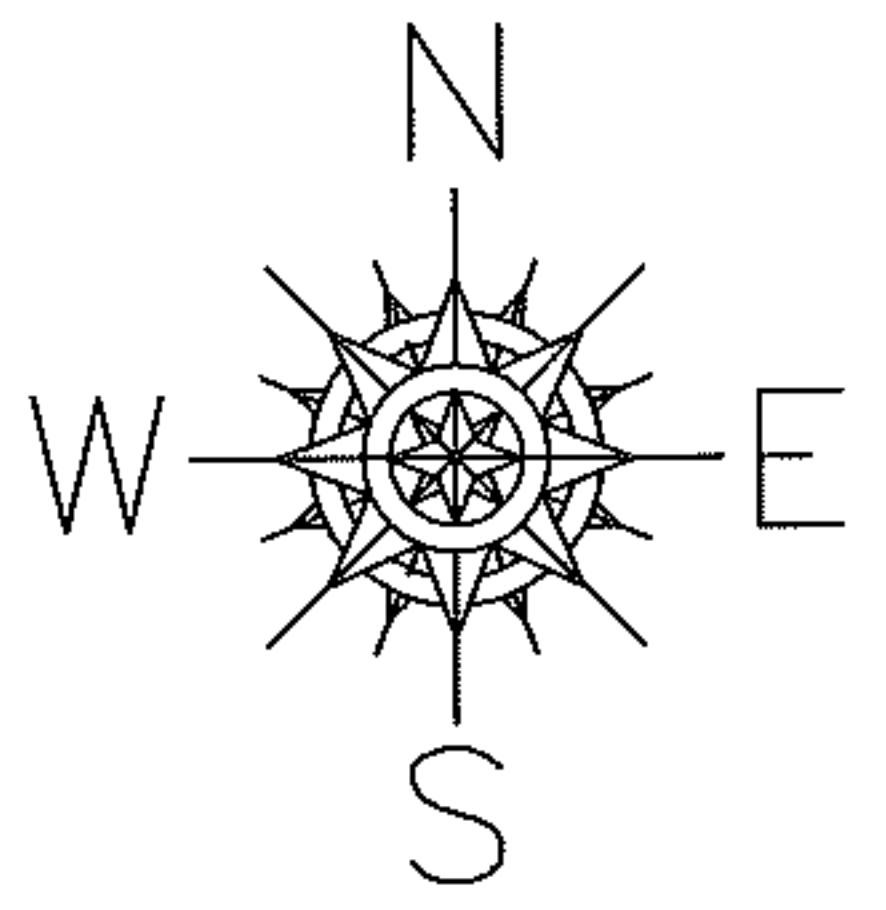
RASSEL

PARENT PARCEL: 17-06-007-000-013, 17-06-010-000-002, & -004

CHILD PARCEL: XX-XX-XXX-XXX-XXX

STARTING POINT: XXXXXX

12-02533-C



**SPLITS/DEEDS PROCESSED**

LORAIN COUNTY TAX MAP DEPARTMENT  
226 MIDDLE AVE. ELYRIA, OHIO

SURVEYED BY: THOMAS SNEZEK  
 CLOSURE: 0.01 : 10.000  
 MAP PAGE(S): 17-F  
 APPROVED BY: TJS DATE: 7-9-12  
 SCALE: 1" = 600 PRIOR INSTRUMENT: DV XXXX/XXX