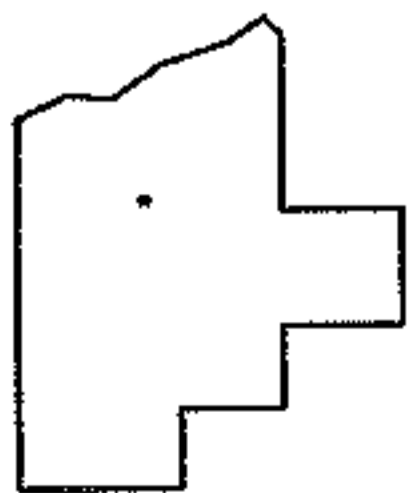
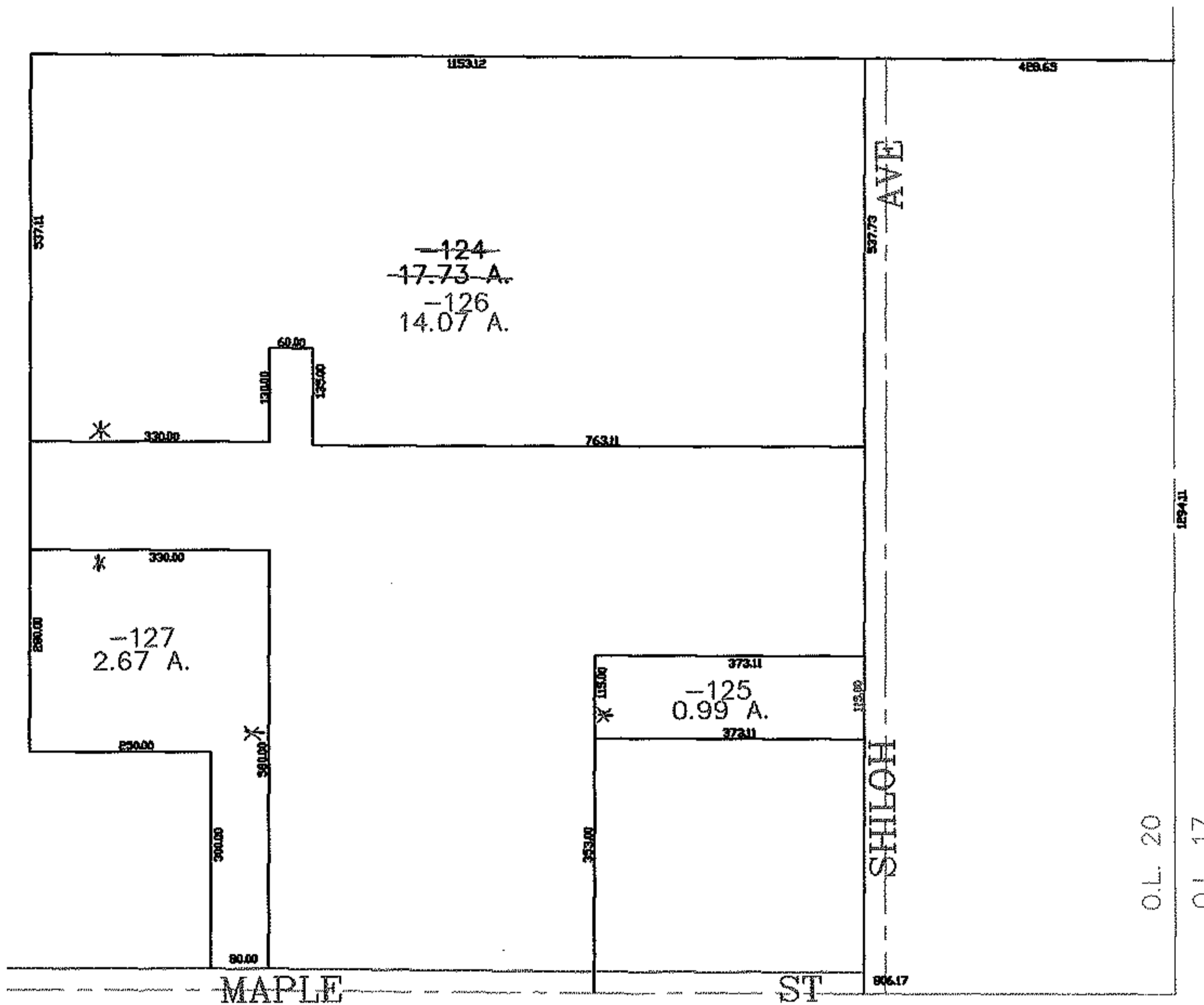
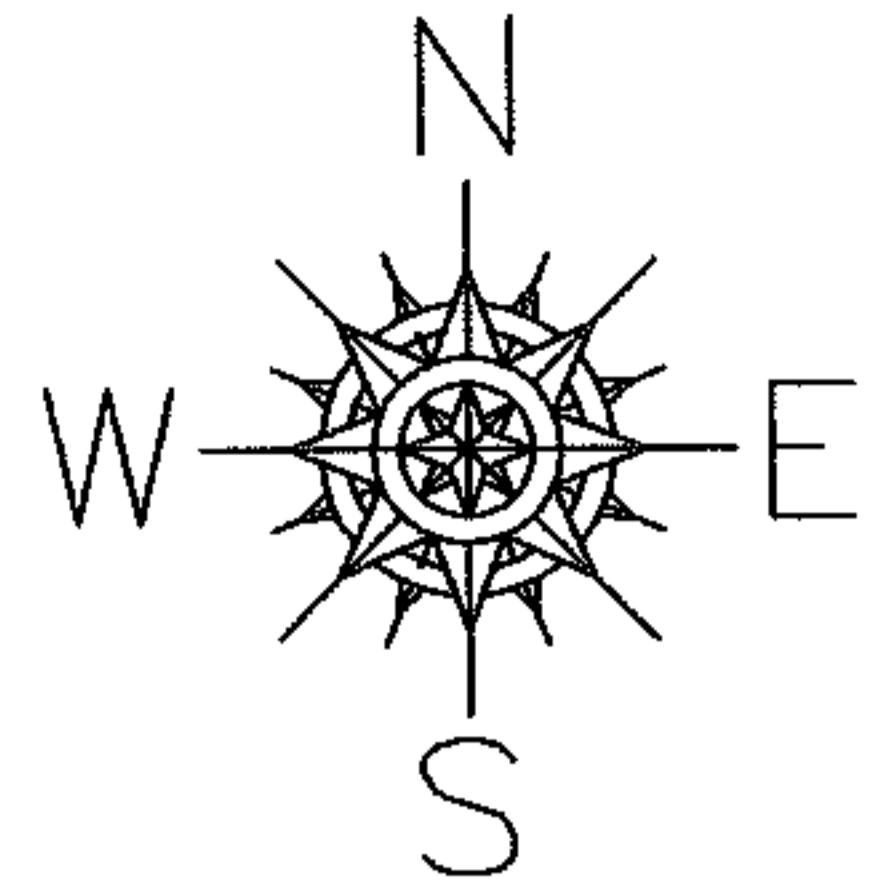


PARENT PARCEL: 18-00-020-000-124

CHILD PARCEL: 18-00-020-000-125, -126, -127

STARTING POINT: SOUTHEAST CORNER OF O.L. 20 & 21

08-02530



SPLITS/DEEDS PROCESSED

LORAIN COUNTY TAX MAP DEPARTMENT  
226 MIDDLE AVE. ELYRIA, OHIO

SURVEYED BY: DANA PARSELL  
 CLOSURE: 0.00 : 10.000  
 MAP PAGE(S): 18-00-020-D  
 APPROVED BY: JAH DATE: 2-26-08  
 SCALE: 1" = 300 PRIOR INSTRUMENT: DV 1396/747