

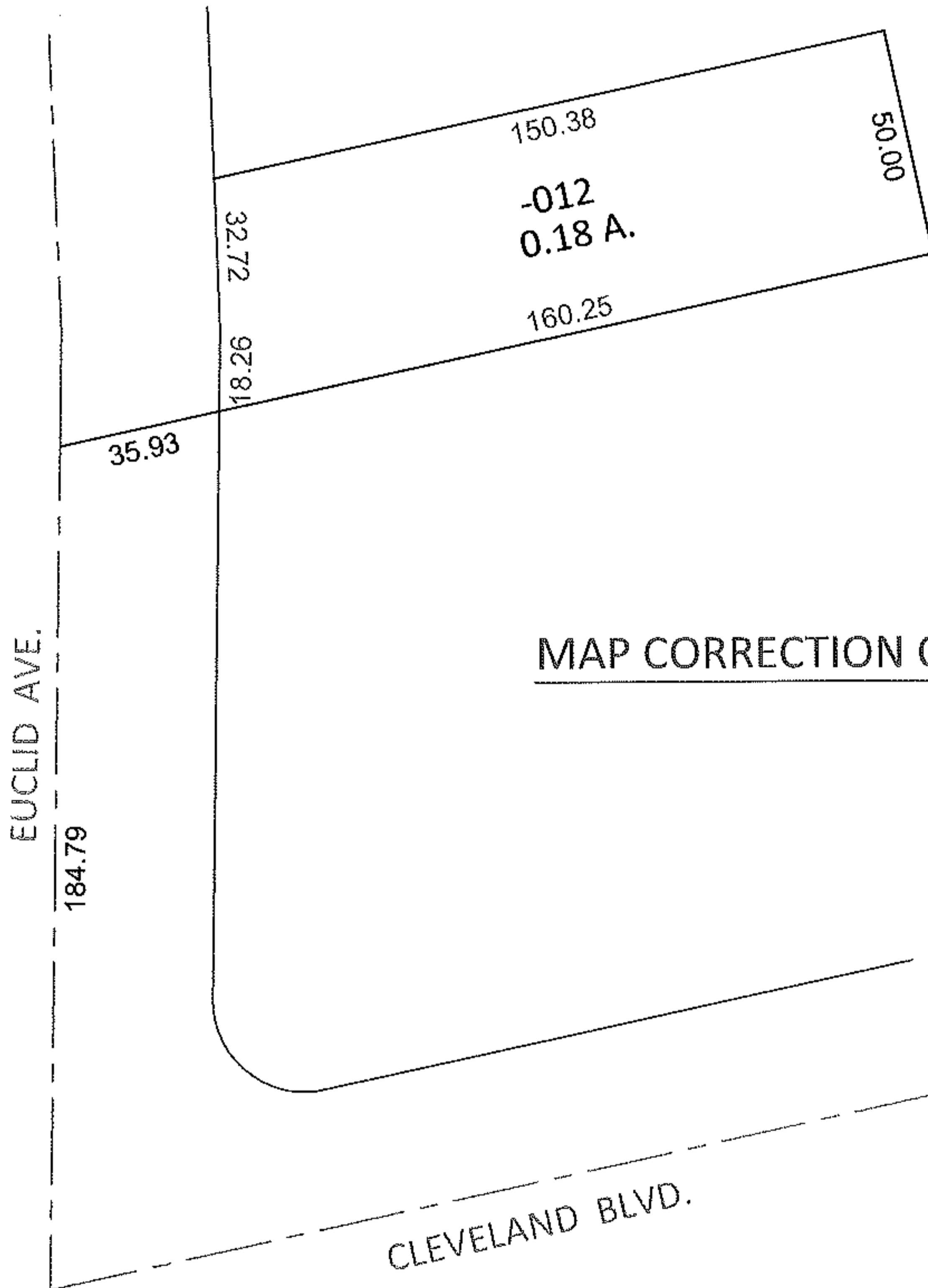
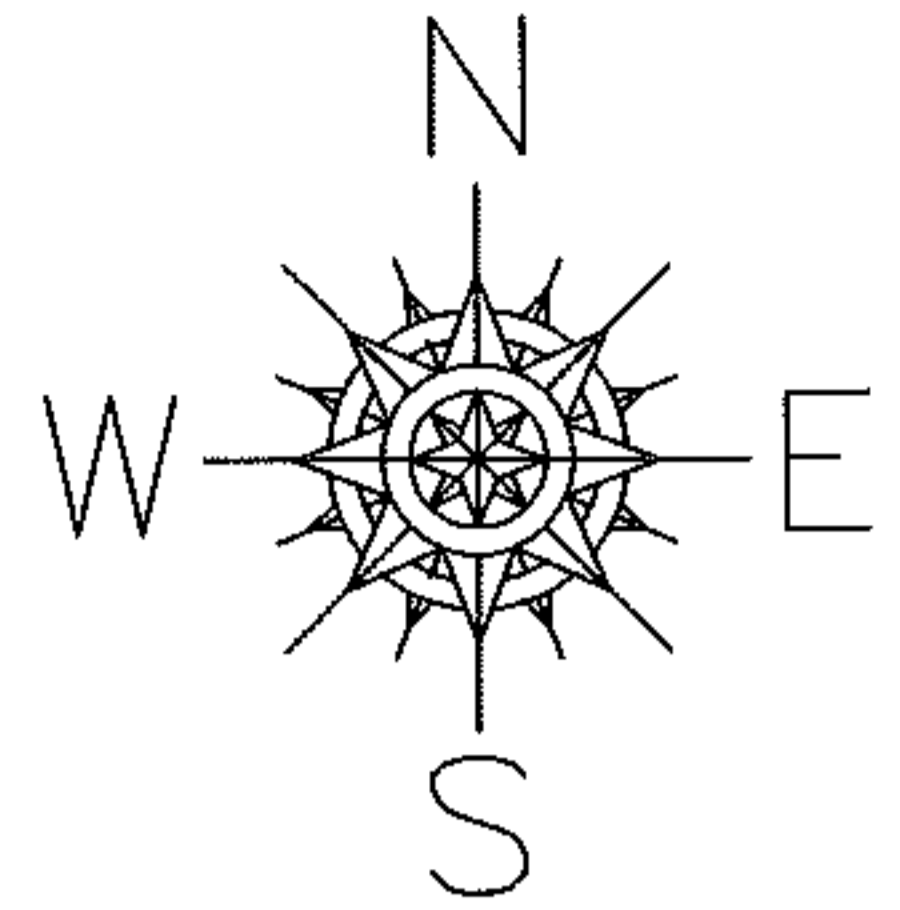
RASTER

PARENT PARCEL: 03-00-047-103-012

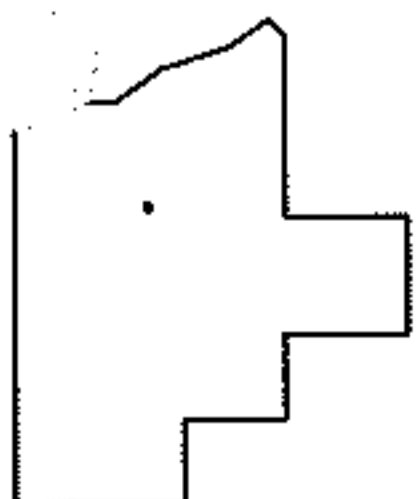
CHILD PARCEL: _____

STARTING POINT: INTERSECTION OF C/L OF EUCLID AVE. AND C/L OF CLEVELAND BLVD.

12-02527-D



MAP CORRECTION ONLY



SPLITS/DEEDS PROCESSED

LORAIN COUNTY TAX MAP DEPARTMENT
226 MIDDLE AVE. ELYRIA, OHIO

SURVEYED BY: WILFREDO BARBOSA

CLOSURE: .01:10,000

MAP PAGE(S): 3-00-047-A

APPROVED BY: RRM DATE: 6-26-12

SCALE: 1" = 50' PRIOR INST.: 20110390588