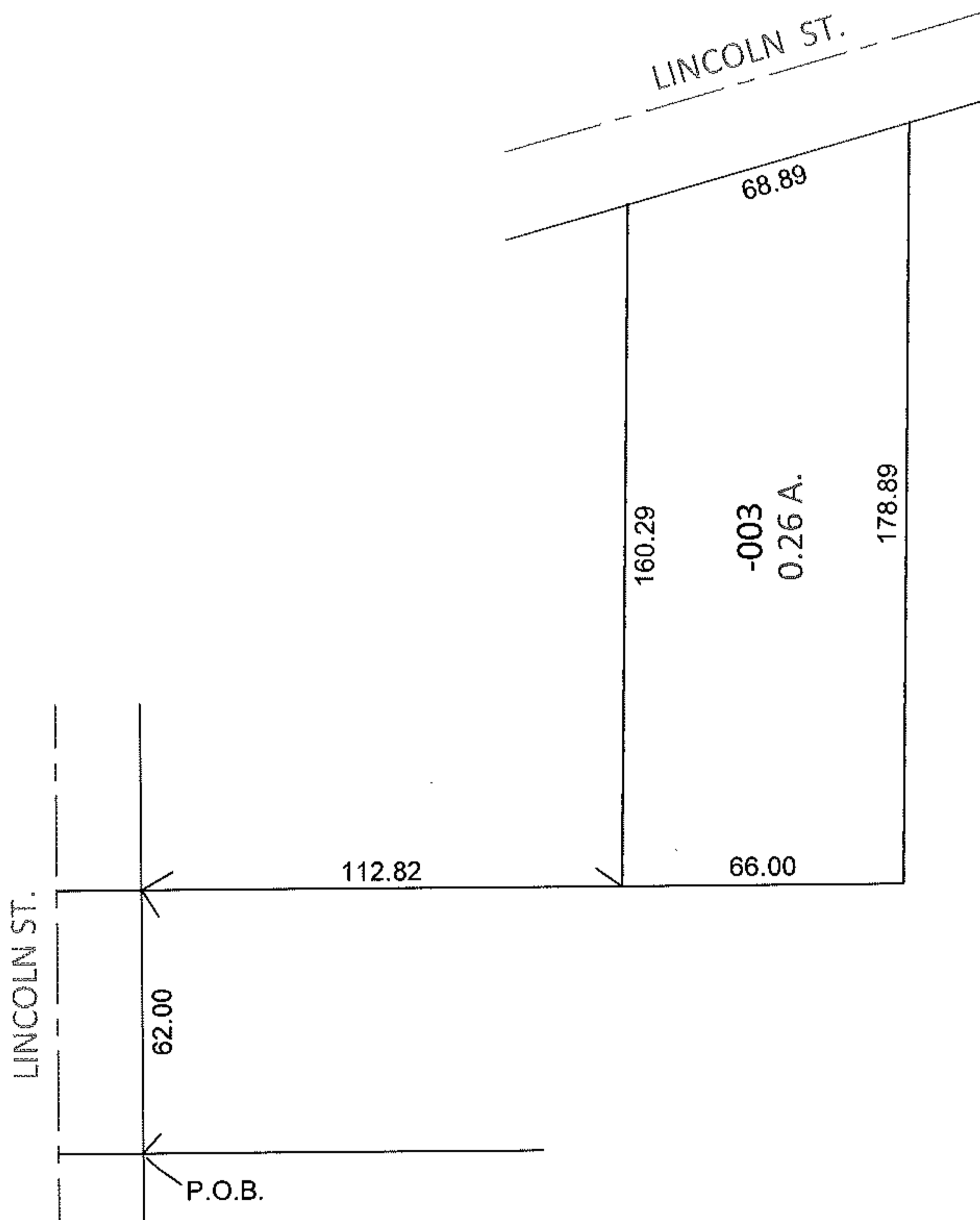
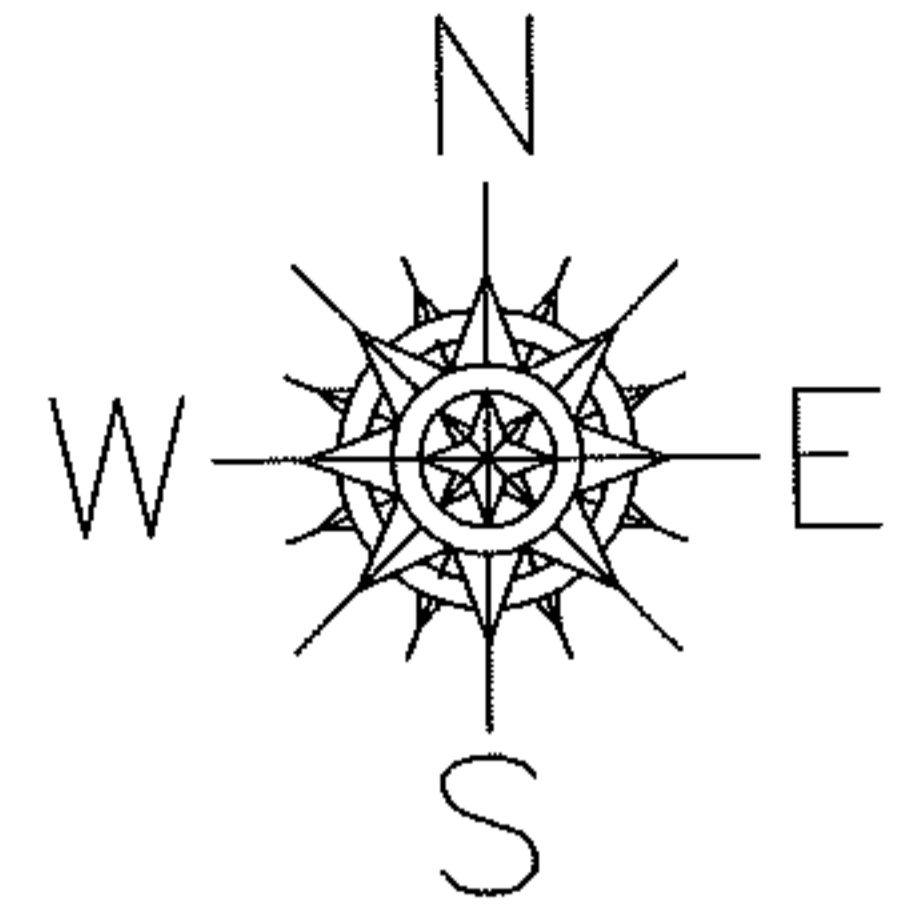


PARENT PARCEL: 09-00-094-103-003

CHILD PARCEL:

12-02524-C

STARTING POINT: EAST LINE OF LINCOLN ST. AND NORTH LINE OF LAND CONVEYED TO SHERIDAN & MARTHA KNIESELY (DV 275 PG.393)



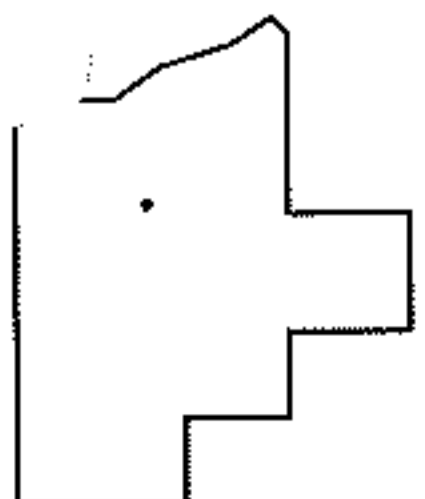
**FRONTAGE AND DEPTH TO ACERAGE CORRECTION**

09-00-094-103-003

0.26 A.

~~68.89 X 179~~

PER SURV. LAUNDON & HUFFMAN



**SPLITS/DEEDS PROCESSED**

LORAIN COUNTY TAX MAP DEPARTMENT  
226 MIDDLE AVE. ELYRIA, OHIO

SURVEYED BY: LAUNDON & HUFFMAN

CLOSURE: N/A

MAP PAGE(S): 9-00-094-B

APPROVED BY: RRM DATE: 6-12-12

SCALE: 1" = 50' PRIOR INST.: 20080252823