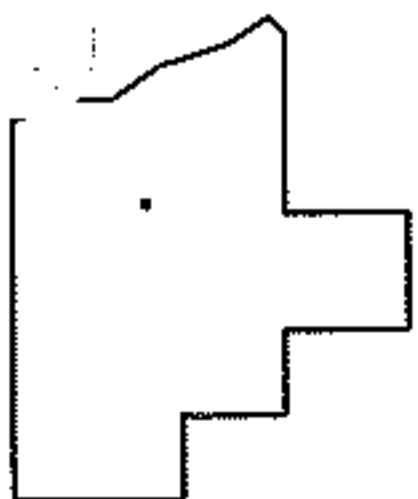
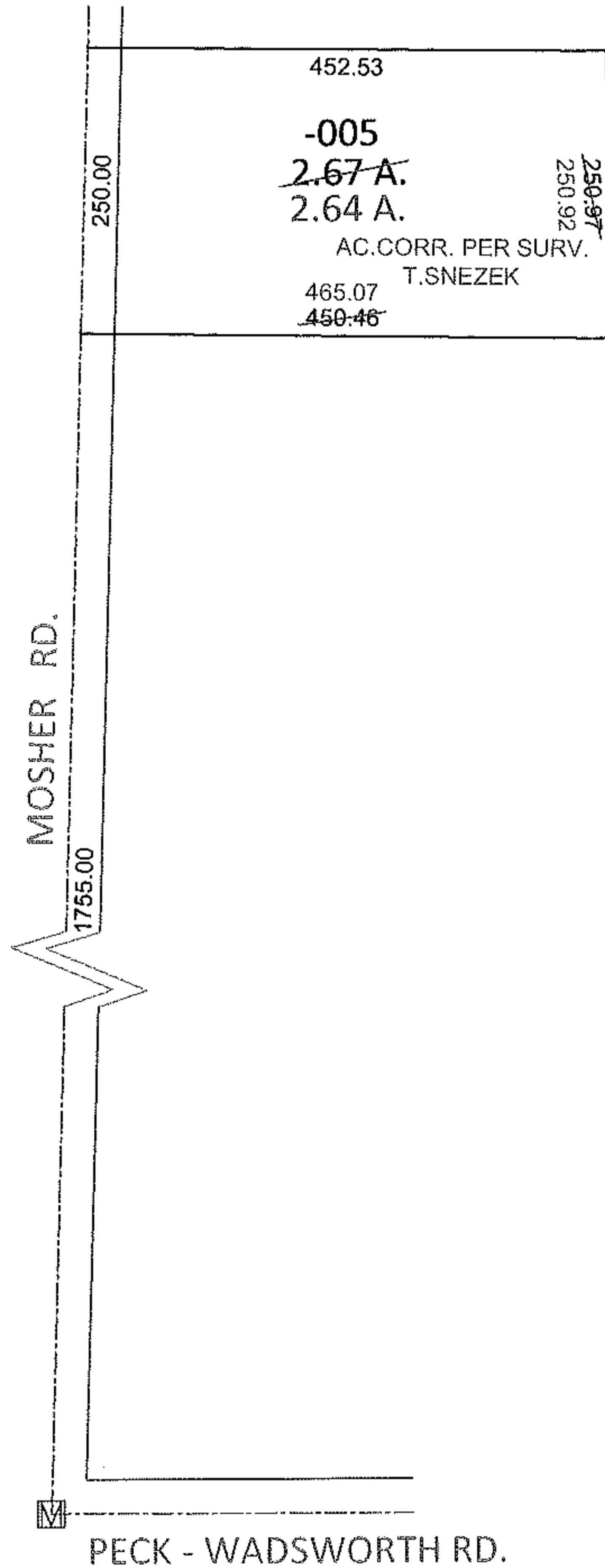
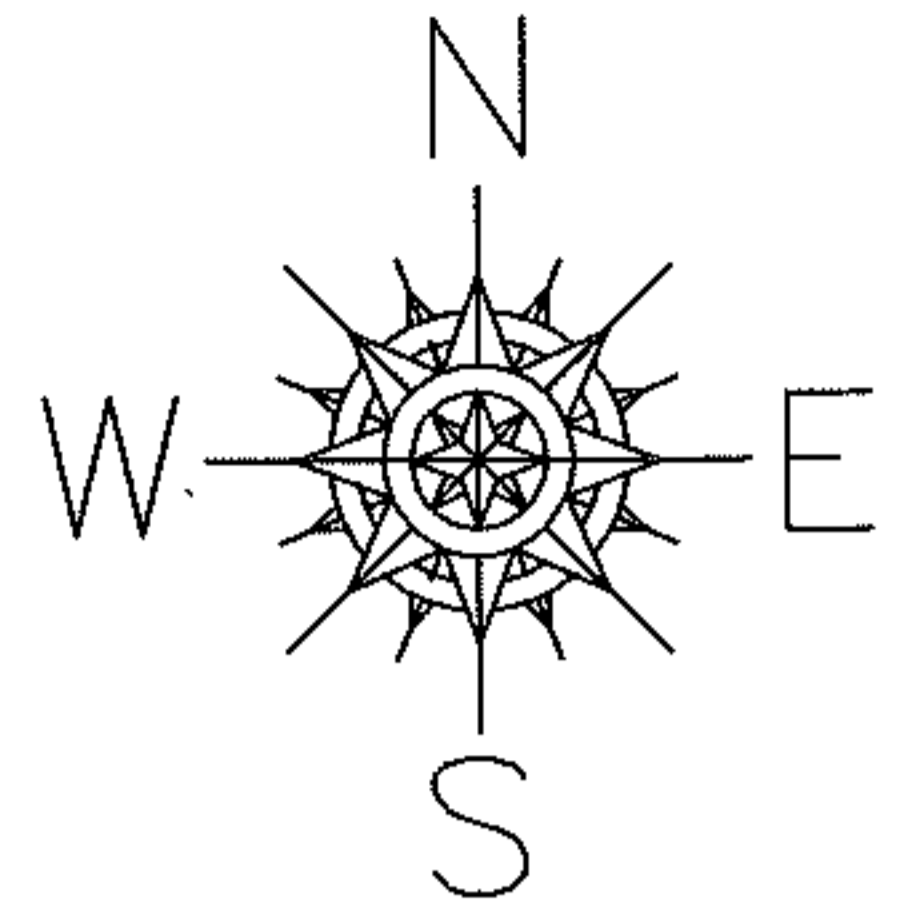


PARENT PARCEL: 17-08-029-000-005

12-02521-D

CHILD PARCEL: _____

STARTING POINT: AT A MON BOX AT THE INTERSECTION OF C/L OF MOSHER RD. AND C/L OF PECK-WADSWORTH RD.



SPLITS/DEEDS PROCESSED

LORAIN COUNTY TAX MAP DEPARTMENT
226 MIDDLE AVE. ELYRIA, OHIO

SURVEYED BY: THOMAS M. SNEZEK

CLOSURE: .01:10,000

MAP PAGE(S): 17-08-029

APPROVED BY: RRM DATE: 6-6-12

SCALE: 1" = 200 PRIOR INST.: 20110362168