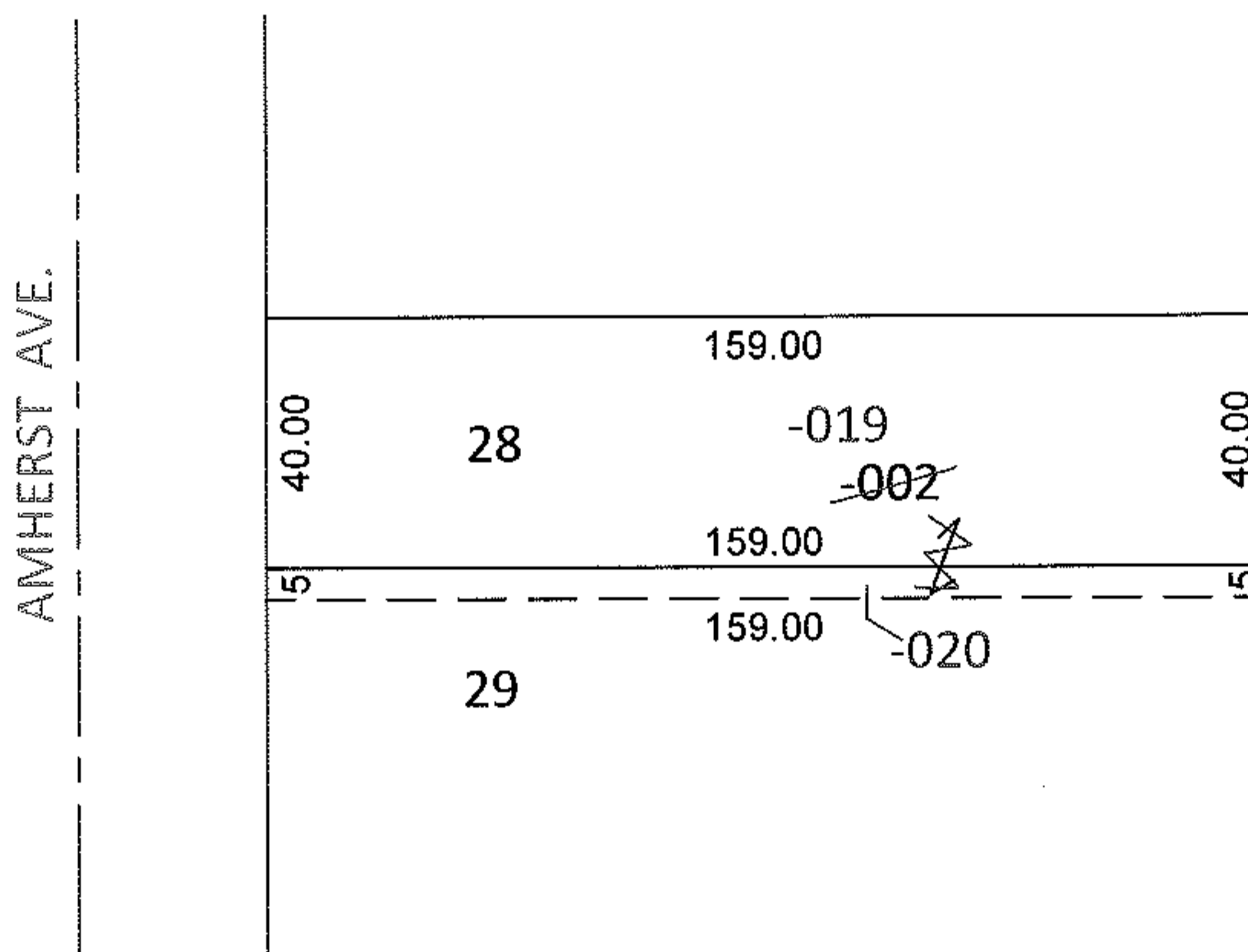
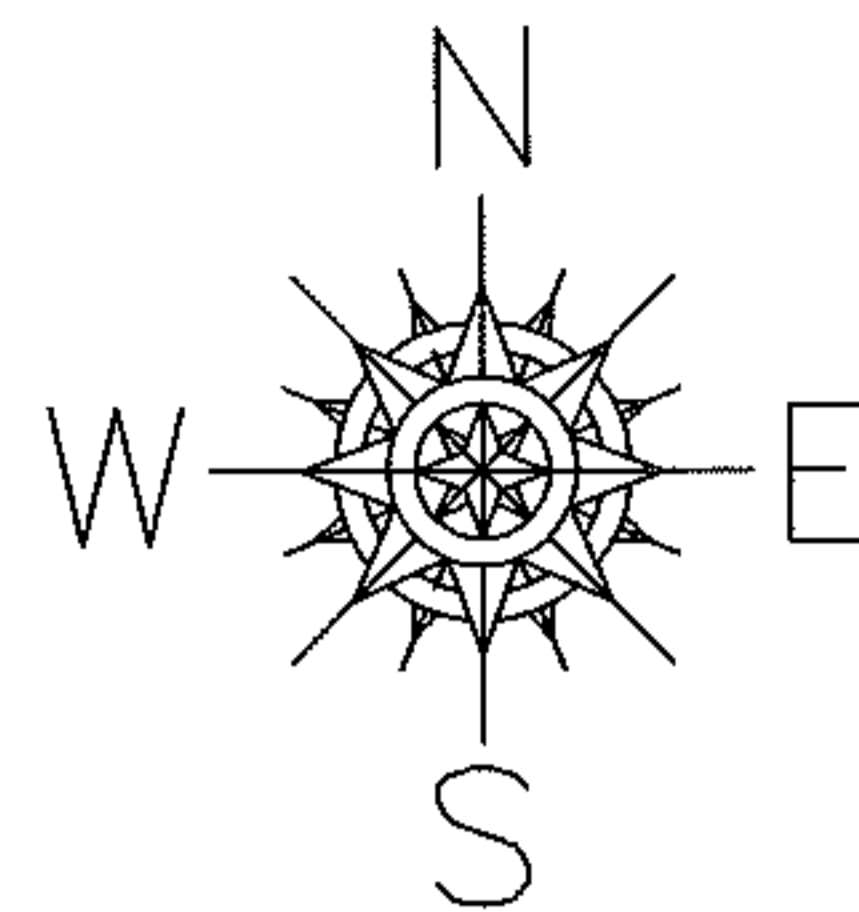


PARENT PARCEL: 02-01-003-216-002

CHILD PARCEL: 02-01-003-216-019, -020

STARTING POINT: S/L 28 AND PART OF S/L 29 IN LORAIN REALTY CO. SUB.(VOL.12 PG.27)

12-02515-U



UNCOMBINATION

~~02-01-003-216-002~~

~~45 X 159~~

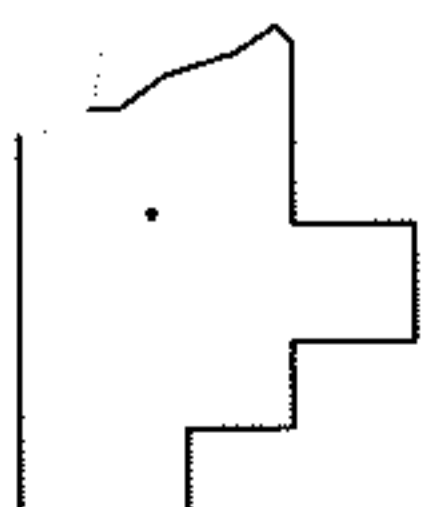
02-01-003-216-019

02-01-003-216-020

40 X 159

5 X 159

TO CORRECT LEGAL WITH 2 LEGALS, 1 PARCEL NO.



SPLITS/DEEDS PROCESSED

LORAIN COUNTY TAX MAP DEPARTMENT
226 MIDDLE AVE. ELYRIA, OHIO

SURVEYED BY: N/A

CLOSURE: N/A

MAP PAGE(S): 2-01-003-1

APPROVED BY: RRM DATE: 5-24-12

SCALE: 1" = 50' PRIOR INST.: 19970476898