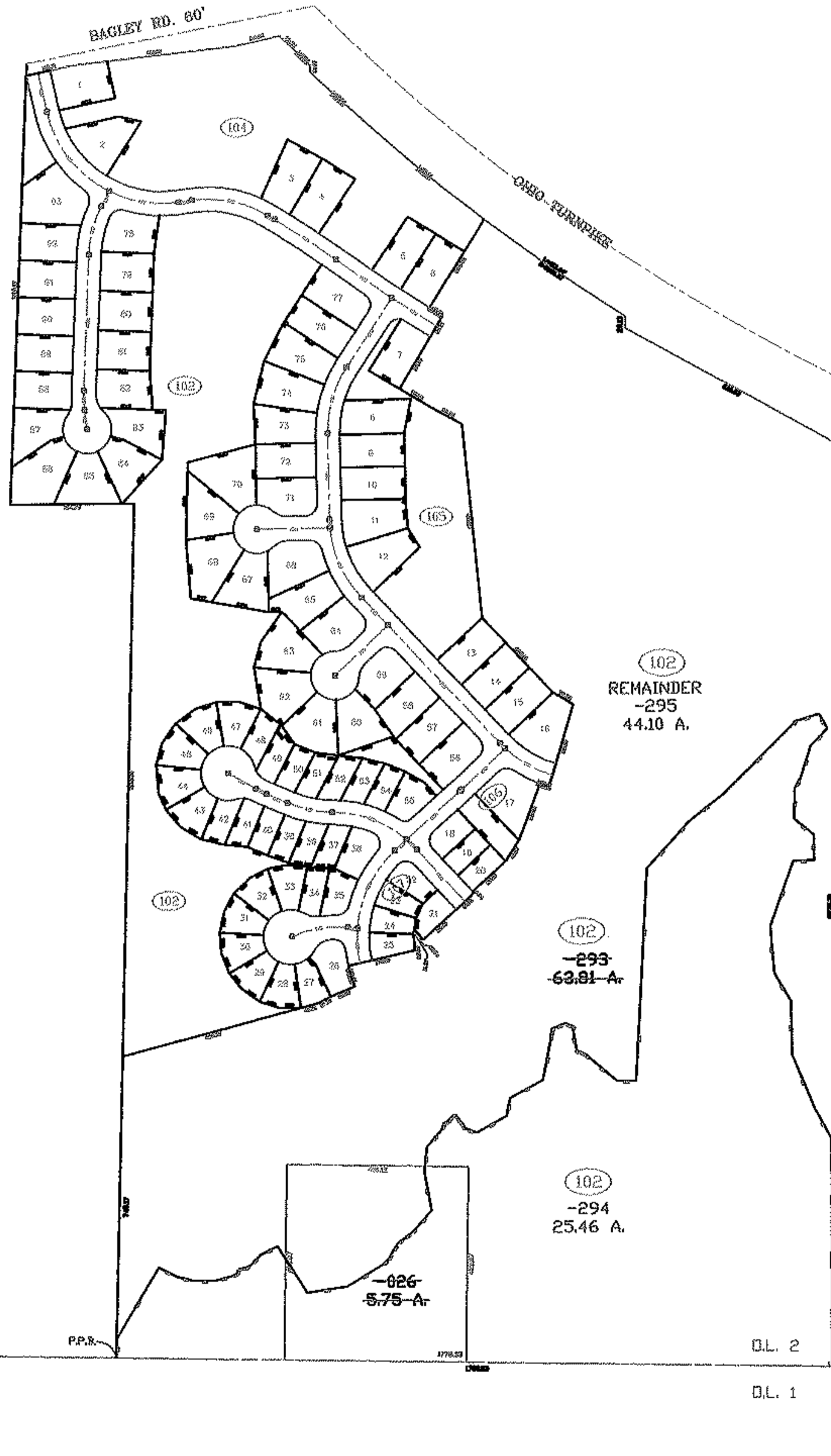
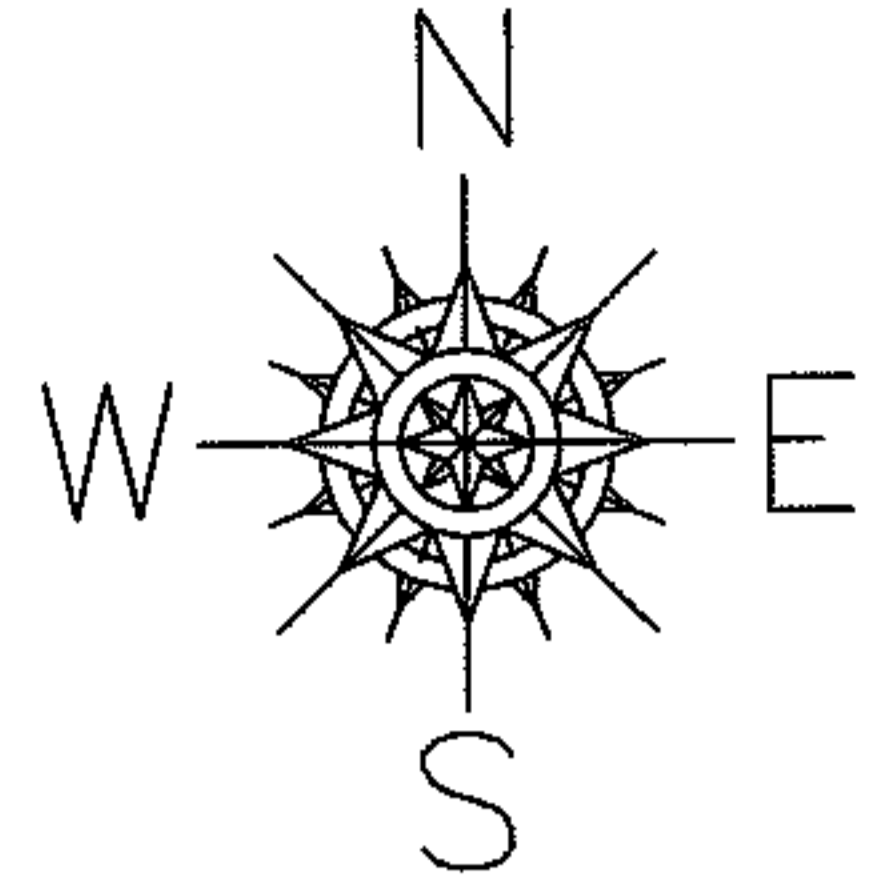


PARENT PARCEL: 07-00-002-102-026, -293

CHILD PARCEL: 07-00-002-102-294 & -295

STARTING POINT: INTERSECTION OF O.L. 1, 2, 11, 12

NO. 07-02509



102
REMAINDER
-295
44.10 A.

102
-293
63.81-A.

102
-294
25.46 A.

-026
5.75-A.

FOR SURVEY SEE
TIMBER RIDGE SUB.
(N. RIDGEVILLE)
PV. 93 PG. 25-29

P.B.
O.L. 2
O.L. 1

O.L. 2
O.L. 1

SPLITS/DEEDS PROCESSED

LORAIN COUNTY TAX MAP DEPARTMENT
226 MIDDLE AVE. ELYRIA, OHIO

SURVEYED BY: E. SUHAIL
CLOSURE: 0.02 : 10.000
MAP PAGE(S): 07-00-002-D
APPROVED BY: TJS DATE: 12/26/07
SCALE: 1" = 100 PRIOR INSTRUMENT: 20060147840