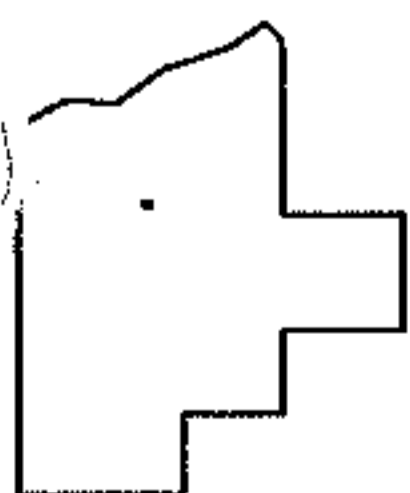
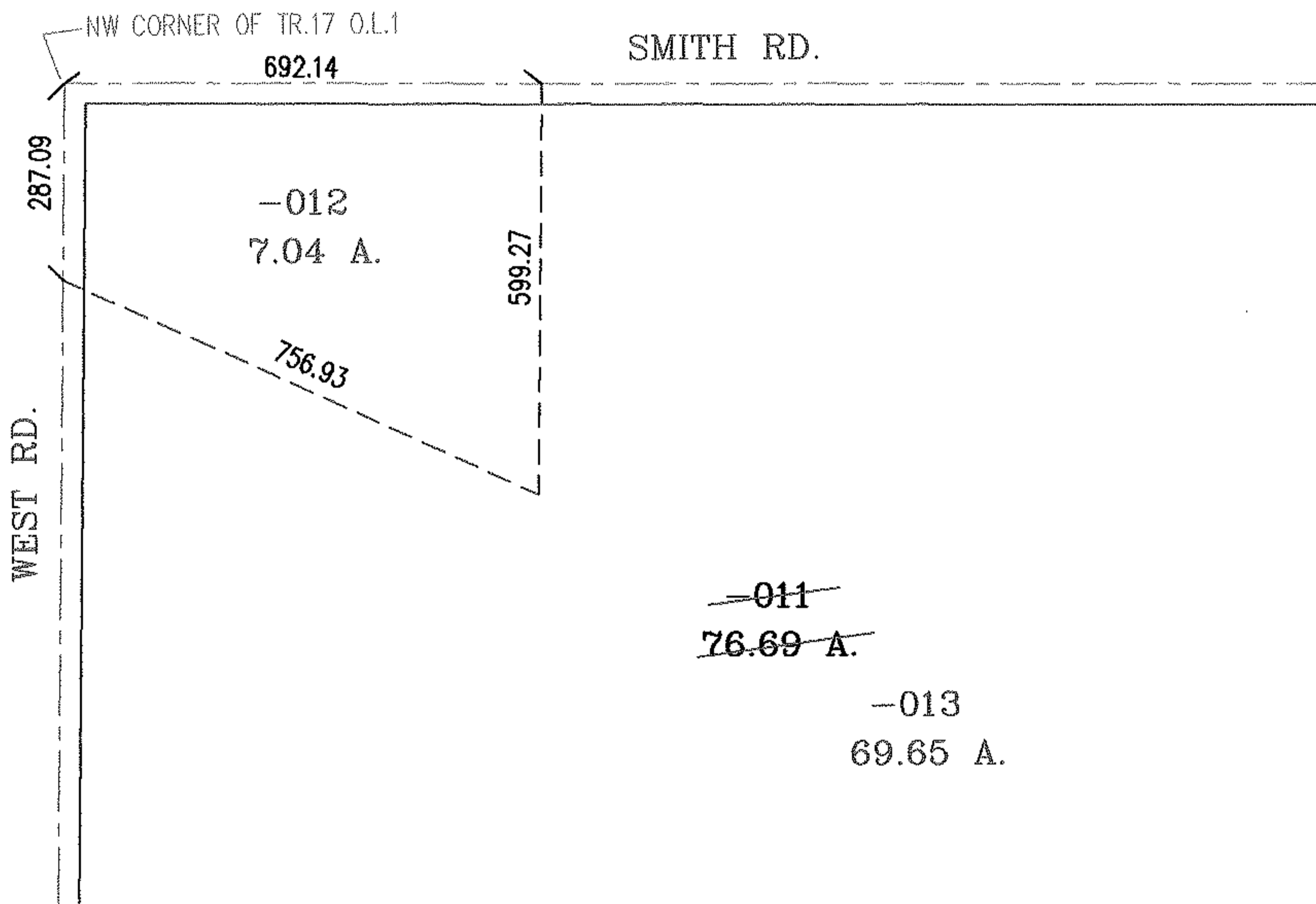
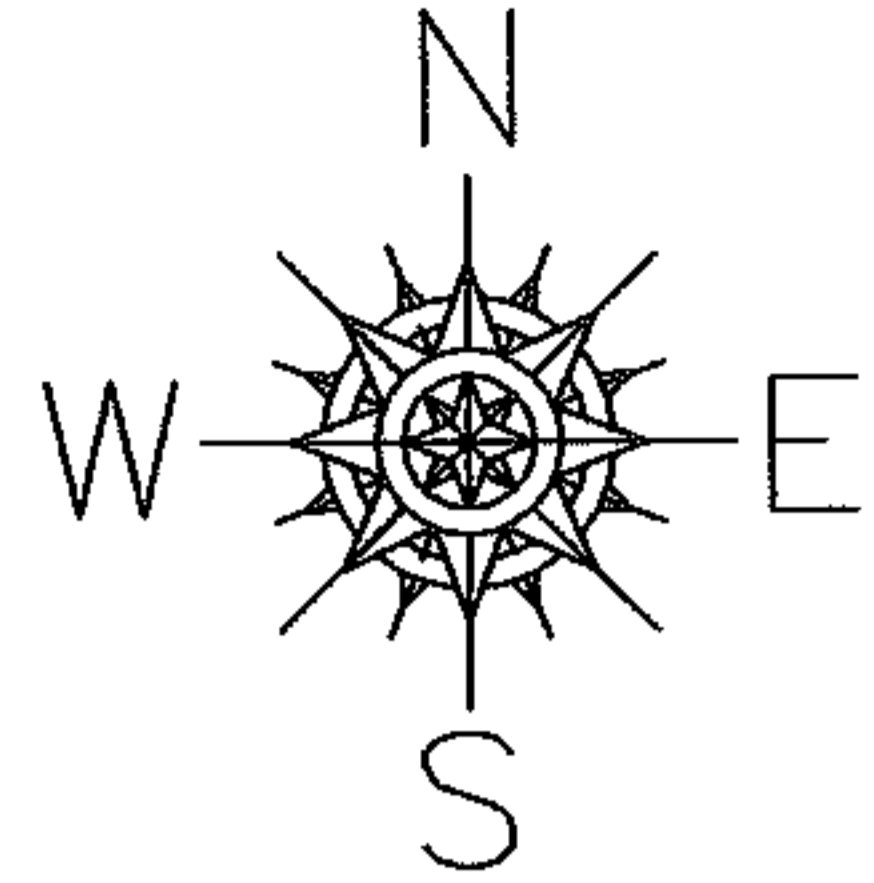


PARENT PARCEL: 21-17-001-000-011

CHILD PARCEL: 21-17-001-000-012,-013

STARTING POINT: INTERSECTION OF C/L OF SMITH RD. AND C/L OF WEST RD.

07-02508



SPLITS/DEEDS PROCESSED
 LORAIN COUNTY TAX MAP DEPARTMENT
 226 MIDDLE AVE. ELYRIA, OHIO

SURVEYED BY: FREDERICK W. BOREMAN
 CLOSURE: .01:10,000
 MAP PAGE(S): 21-D
 APPROVED BY: RRM DATE: 12/27/07
 SCALE: 1" = 300 PRIOR INSTRUMENT: 20040034905