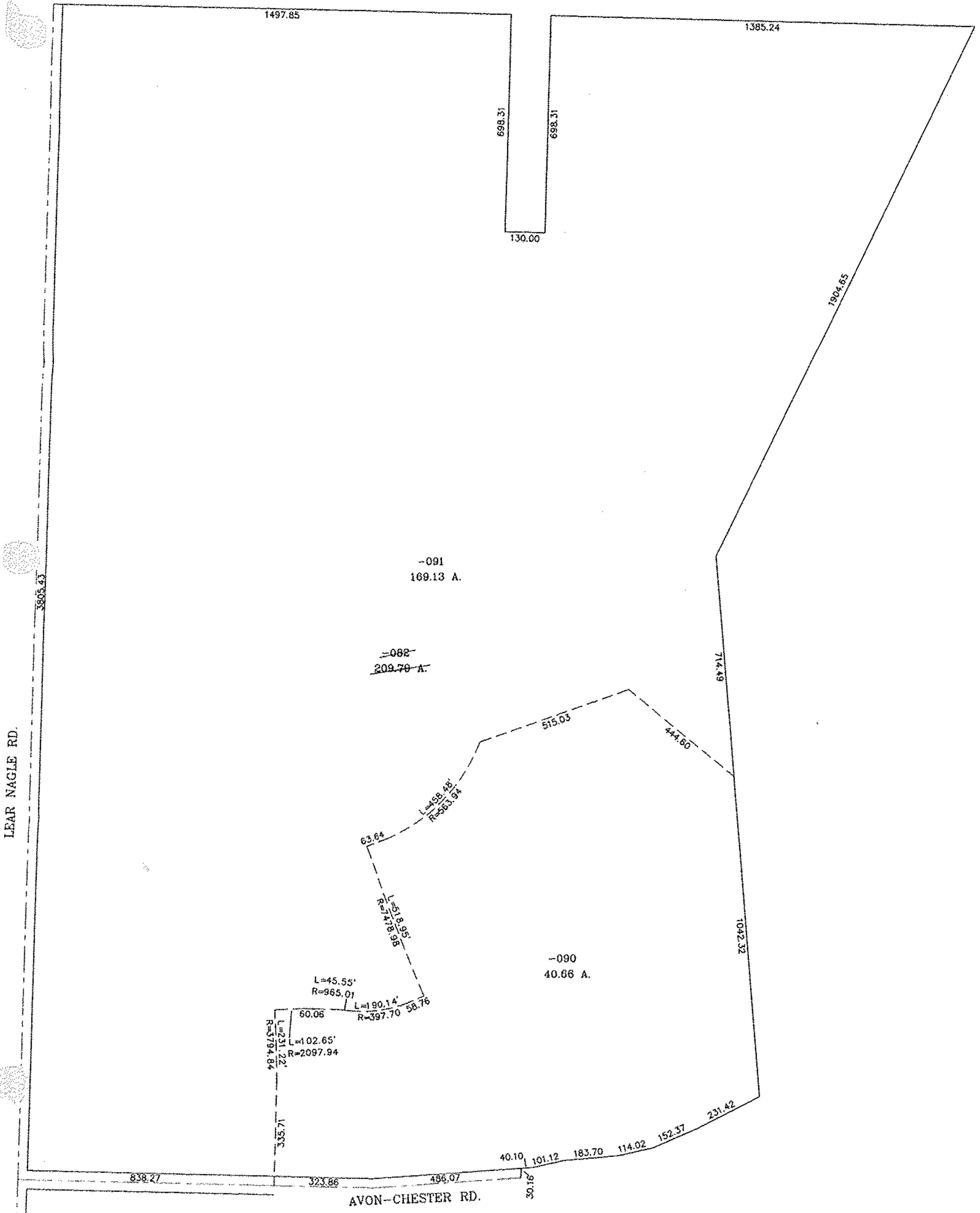


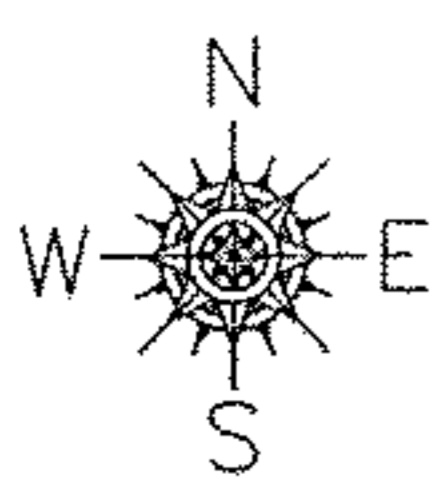
07-02507

RASTER




LEAR NAGLE RD.

AVON-CHESTER RD.



07-02507

 <p>SPLITS/DEEDS PROCESSED LORAIN COUNTY TAX MAP DEPARTMENT 226 MIDDLE AVE. ELYRIA, OHIO</p>	SURVEYED BY: CHRISTOPHER JOHN TOMKO
	CLOSURE: 01:10.000
	MAP PAGE(S): 04-02-028-A
	APPROVED BY: BSM DATE: 12/27/07
	SCALE: 1" = 200'. PRIOR INSTRUMENT: 20060132374

C:21
C:28